

PRODUCT INFORMATION

Common Name	M9346A
Synonyms	FBP, FOLR, FRalpha, NCFTD
Applications	ELISA, Flow Cyt
Recommended Dilutions	ELISA 1:5000-10000, Flow Cyt 1:100
Formulation & Reconstitution	Lyophilized from sterile PBS, pH 7.4. Normally 5% - 8% trehalose is added as protectants before lyophilization. Please see Certificate of Analysis for specific instructions.
Host Species	Chimeric
IgG type	IgG1(E239D, M241L)
Reactivity	Human
Target	FOLR1
Uniprot ID	P15328
Description	Anti-FOLR1(mirvetuximab biosimilar) mAb
Delivery	In Stock
Storage & Shipping	Store at -20°C to -80°C for 12 months in lyophilized form. After reconstitution, if not intended for use within a month, aliquot and store at -80°C (Avoid repeated freezing and thawing).Lyophilized antibodies are shipped at ambient temperature.
Background	Research grade biosimilar. Not for use in therapeutic or diagnostic procedures for humans or animals.
Usage	Research use only. All DIMA recombinant antibodies are genuinely generated by DIMA Biotech. They are all under patent application. Any protein sequencing or reverse engineering attempt is prohibited. We are actively scrutinizing all patent application to ensure no IP infringement.
Conjugate	Unconjugated

DIMA BIOTECH CONFIDENTIAL



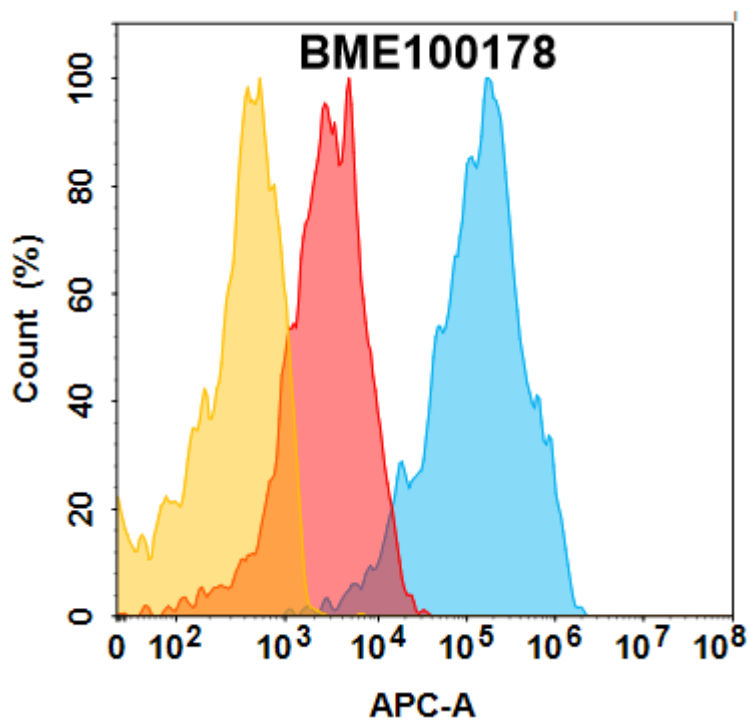


Figure 1. FOLR1 protein is highly expressed on the surface of Expi293 cell membrane. Flow cytometry analysis with 1 μ g/mL Anti-FOLR1(mirvetuximab biosimilar) mAb (BME100178) on Expi293 cells transfected with human FOLR1 (Blue histogram) or Expi293 transfected with irrelevant protein (Red histogram), and Isotype antibody on Expi293 transfected with irrelevant protein (Orange histogram).

Anti-FOLR1(mirvetuximab biosimilar) mAb ELISA

0.2 μ g of Human FOLR1, His tagged protein per well

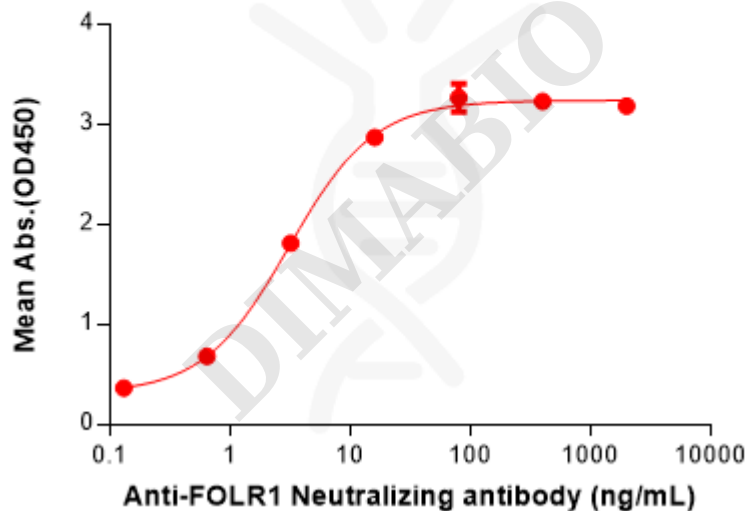


Figure 2. ELISA plate pre-coated by 2 μ g/mL (100 μ L/well) Human FOLR1 Protein, His Tag(PME100249) can bind Anti-FOLR1(mirvetuximab biosimilar) mAb(BME100178) in a linear range of 0.64–16 ng/mL.

