

PRODUCT INFORMATION

Common Name	AMG133
Synonyms	GIP-R
Applications	ELISA, Flow Cyt
Recommended Dilutions	ELISA 1:5000-10000, Flow Cyt 1:100
Formulation & Reconstitution	Lyophilized from sterile PBS, pH 7.4. Normally 5% - 8% trehalose is added as protectants before lyophilization. Please see Certificate of Analysis for specific instructions of reconstitution.
Host Species	Homo sapiens
IgG type	IgG1(E155C,R175C,N180G,V185C)
Reactivity	Human
Target	GIPR
Uniprot ID	P48546
Description	Anti-GIPR(maridebart biosimilar) mAb
Delivery	In Stock
Storage & Shipping	Store at -20°C to -80°C for 12 months in lyophilized form. After reconstitution, if not intended for use within a month, aliquot and store at -80°C (Avoid repeated freezing and thawing). Lyophilized antibodies are shipped at ambient temperature.
Background	Research grade biosimilar. Not for use in therapeutic or diagnostic procedures for humans or animals.
Usage	Research use only



Anti-GIPR(maridebart biosimilar) mAb ELISA

0.2 μ g of Human GIPR , hFc tagged protein per well

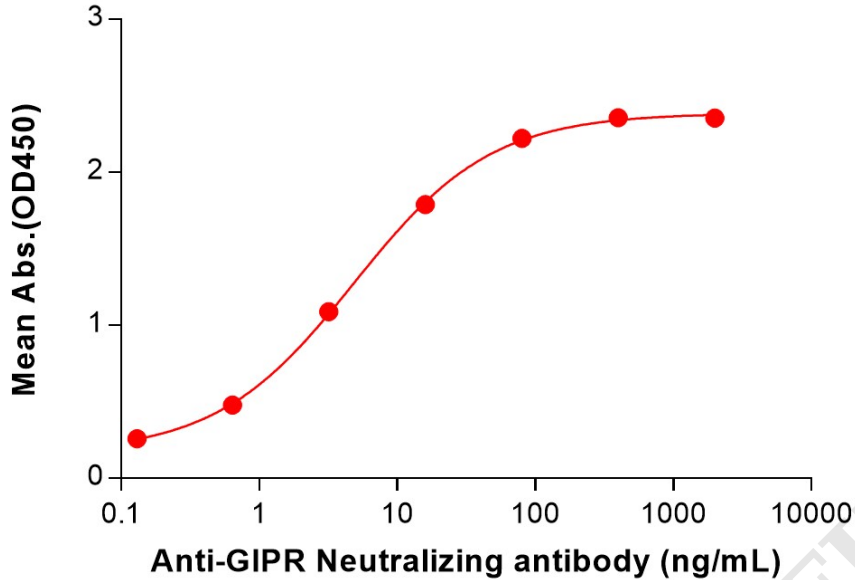


Figure 1. ELISA plate pre-coated by 2 μ g/mL (100 μ L/well) Human GIPR Protein, hFc Tag (PME101267) can bind Anti-GIPR(maridebart biosimilar) mAb (BME100209) in a linear range of 0.64-80 ng/mL. In order to specifically detect BME100209, mouse anti-human Fab-specific antibody was used as detection antibody.

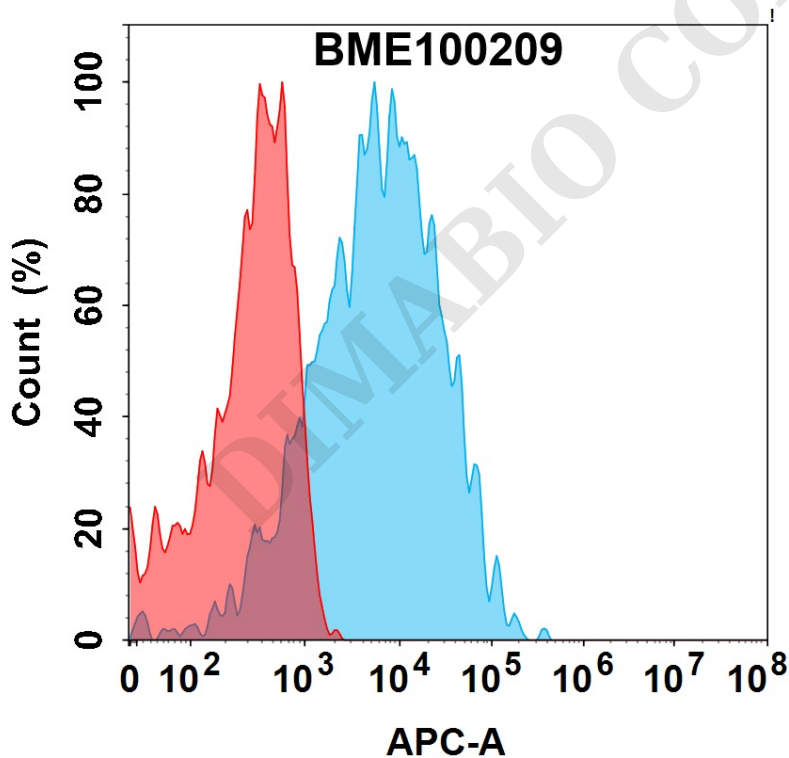


Figure 2. Flow cytometry analysis with 1 μ g/mL Anti-GIPR(maridebart biosimilar) mAb (BME100209) on Expi293 cells transfected with Human GIPR protein (Blue histogram) or Expi293 transfected with irrelevant protein (Red histogram).

