

PRODUCT INFORMATION

Common Name	CDX-011 (DOX), CR011, glembatumumab vedotin (ADC), Unconjugated mAb
Conjugate	Unconjugated
Synonyms	HGFIN, NMB
Applications	ELISA, Flow Cyt
Recommended Dilutions	ELISA 1:5000-10000, Flow Cyt 1:100
Formulation & Reconstitution	Lyophilized from sterile PBS, pH 7.4. Normally 5 % - 8% trehalose is added as protectants before lyophilization. Please see Certificate of Analysis for specific instructions.
Host Species	Homo sapiens
IgG type	IgG2(S257A)
Reactivity	Human
Target	GPNMB
Uniprot ID	Q14956
Description	Anti-GPNMB(glembatumumab biosimilar) mAb
Delivery	In Stock
Storage & Shipping	Store at -20°C to -80°C for 12 months in lyophilized form. After reconstitution, if not intended for use within a month, aliquot and store at -80°C (Avoid repeated freezing and thawing).Lyophilized antibodies are shipped at ambient temperature.
Background	Research grade biosimilar. Not for use in therapeutic or diagnostic procedures for humans or animals. Our unconjugated biosimilar monoclonal antibodies (mAbs) are based on the sequences outlined in relevant patents or scientific publications. These antibodies are in their native, unconjugated form, meaning they do not contain any payload or therapeutic agent attached. They are designed for use in research and development, and their performance has been tested as standalone molecules through comprehensive QC tests.
Usage	Research use only
DIMA Disclaimer	All DIMA recombinant antibodies are genuinely generated by DIMA Biotech. They are all under patent application. Any protein sequencing or reverse engineering attempt is prohibited. We are actively scrutinizing all patent application to ensure no IP infringement.



Anti-GPNMB(glembatumumab biosimilar) mAb ELISA

0.2 μ g of Human GPNMB, His tagged protein per well

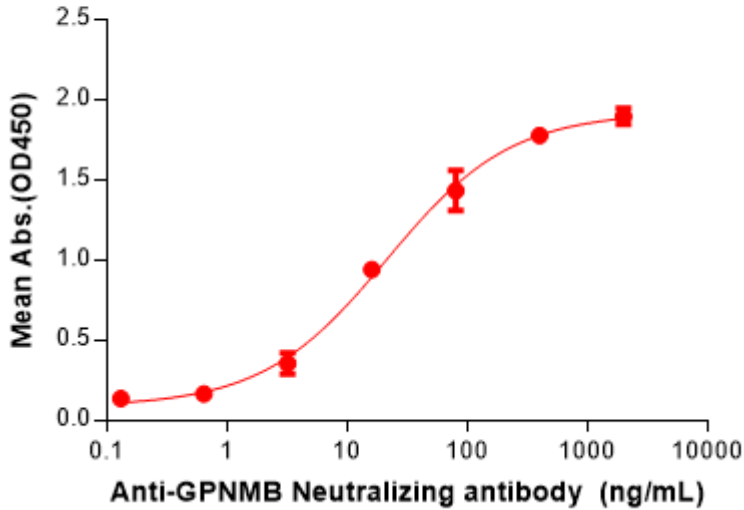


Figure 1. ELISA plate pre-coated by 2 μ g/mL (100 μ L/well) Human GPNMB Protein, His Tag (PME101255) can bind Anti-GPNMB(glembatumumab biosimilar) mAb (BME100194) in a linear range of 3.20-80 ng/mL.

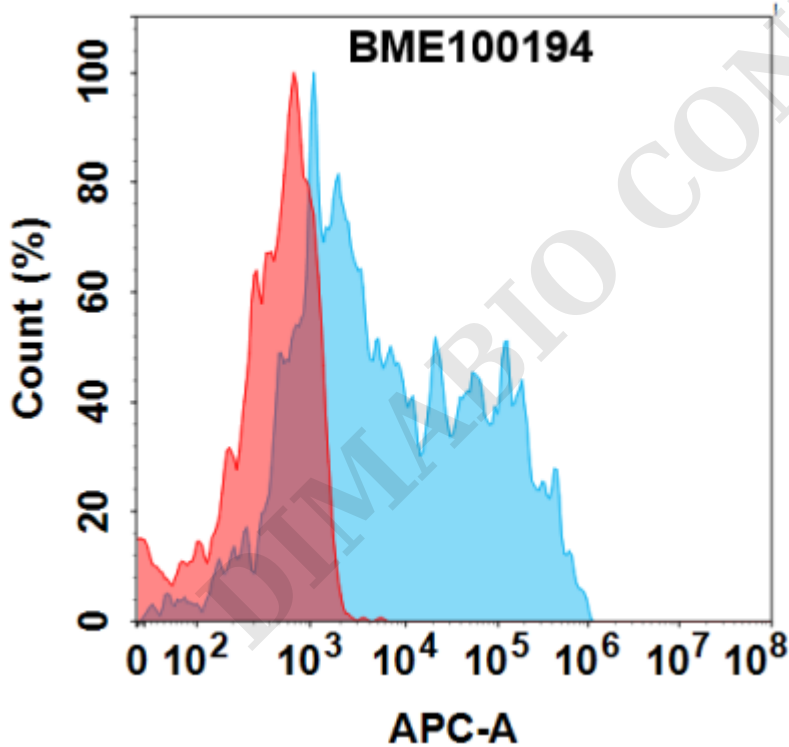


Figure 2. Flow cytometry analysis with 1 μ g/mL Anti-GPNMB(glembatumumab biosimilar) mAb (BME100194) on Expi293 cells transfected with Human GPNMB protein (Blue histogram) or Expi293 transfected with irrelevant protein (Red histogram).

