

PRODUCT INFORMATION

Clone ID	12B6
Target	GPR75
Synonyms	Probable G-protein coupled receptor 75
Host Species	Rabbit
Description	Anti-GPR75 antibody(12B6), Rabbit mAb
Delivery	In Stock
Uniprot ID	O95800
IgG type	Rabbit IgG
Clonality	Monoclonal
Reactivity	Human
Applications	Flow Cyt
Recommended Dilutions	Flow Cyt 1/100
Purification	Purified from cell culture supernatant by affinity chromatography
Formulation & Reconstitution	Lyophilized from sterile PBS, pH 7.4. Normally 5% - 8% trehalose is added as protectants before lyophilization. Please see Certificate of Analysis for specific instructions of reconstitution.
Storage & Shipping	Store at -20°C to -80°C for 12 months in lyophilized form. After reconstitution, if not intended for use within a month, aliquot and store at -80°C (Avoid repeated freezing and thawing). Lyophilized proteins are shipped at ambient temperature.
Background	GPR75 is a member of the G protein-coupled receptor family. GPRs are cell surface receptors that activate guanine-nucleotide binding proteins upon the binding of a ligand.[supplied by OMIM, Jul 2002]
Usage	Research use only

CONFIDENTIAL



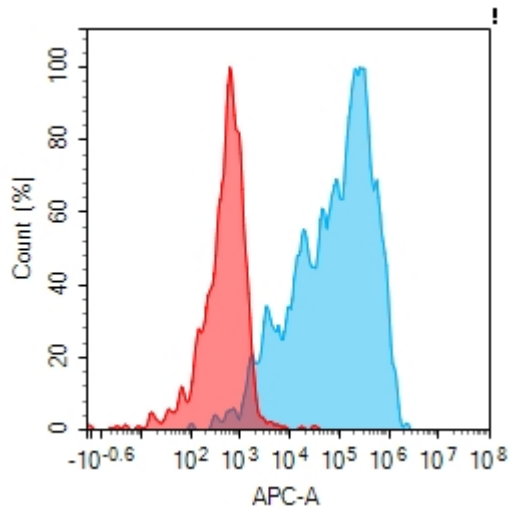


Figure 1. Flow cytometry analysis with 10 μ g/mL Anti-GPR75 (12B6) mAb on Expi293 cells transfected with human GPR75 (Blue histogram) or Expi293 transfected with irrelevant protein (Red histogram).

DIMABIO CONFIDENTIAL

