

**PRODUCT INFORMATION**

<b>Clone ID</b>	DMC482
<b>Target</b>	GPR77
<b>Synonyms</b>	C5L2; GPF77; GPR77
<b>Host Species</b>	Rabbit
<b>Description</b>	Anti-GPR77 antibody(DMC482); IgG1 Chimeric mAb
<b>Delivery</b>	In Stock
<b>Uniprot ID</b>	Q9P296
<b>IgG type</b>	Rabbit/Human Fc chimeric IgG1
<b>Clonality</b>	Monoclonal
<b>Reactivity</b>	Human
<b>Applications</b>	Flow Cyt
<b>Recommended Dilutions</b>	Flow Cyt 1:100
<b>Purification</b>	Purified from cell culture supernatant by affinity chromatography
<b>Formulation &amp; Reconstitution</b>	Lyophilized from sterile PBS, pH 7.4. Normally 5 % - 8% trehalose is added as protectants before lyophilization. Please see Certificate of Analysis for specific instructions of reconstitution.
<b>Storage &amp; Shipping</b>	Store at -20°C to -80°C for 12 months in lyophilized form. After reconstitution, if not intended for use within a month, aliquot and store at -80°C (Avoid repeated freezing and thawing). Lyophilized proteins are shipped at ambient temperature.
<b>Background</b>	This gene encodes a G-protein coupled receptor 1 family member involved in the complement system of the innate immune response. Unlike classical G-protein coupled receptors; the encoded protein does not associate with intracellular G-proteins. It may instead modulate signal transduction through the beta-arrestin pathway; and may alternatively act as a decoy receptor. This gene may be involved in coronary artery disease and in the pathogenesis of sepsis. Alternative splicing results in multiple transcript variants. [provided by RefSeq; Nov 2012]
<b>Usage</b>	Research use only



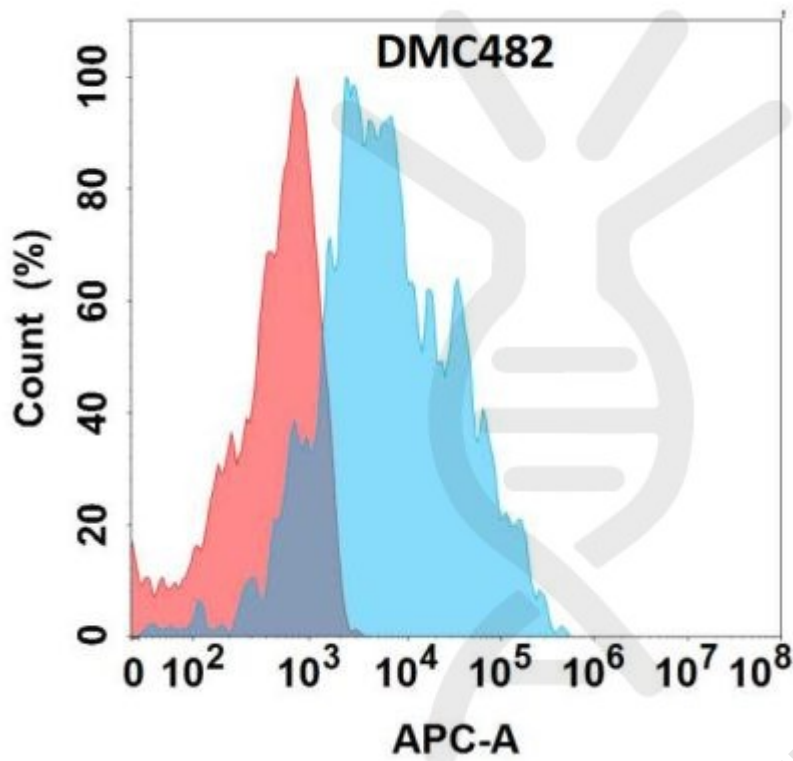


Figure 1. Flow cytometry analysis with Anti-GPR77 (DMC482) on Expi293 cells transfected with human GPR77 (Blue histogram) or Expi293 transfected with irrelevant protein (Red histogram).

