

PRODUCT INFORMATION

Clone ID	DM61
Target	GPRC5D
Synonyms	GPRC5D
Host Species	Rabbit
Description	Anti-GPRC5D antibody(DM61); Rabbit mAb
Delivery	In Stock
Uniprot ID	Q9NZD1
IgG type	Rabbit IgG
Clonality	Monoclonal
Reactivity	Human
Applications	ELISA IHC
Recommended Dilutions	ELISA 1:5000-10000; Flow Cyt 1:100, IHC 1:200
Purification	Purified from cell culture supernatant by affinity chromatography
Formulation & Reconstitution	Lyophilized from sterile PBS, pH 7.4. Normally 5% - 8% trehalose is added as protectants before lyophilization. Please see Certificate of Analysis for specific instructions of reconstitution.
Storage & Shipping	Store at -20°C to -80°C for 12 months in lyophilized form. After reconstitution, if not intended for use within a month, aliquot and store at -80°C (Avoid repeated freezing and thawing). Lyophilized proteins are shipped at ambient temperature.
Background	The protein encoded by this gene is a member of the G protein-coupled receptor family; however; the specific function of this gene has not yet been determined.
Usage	Research use only



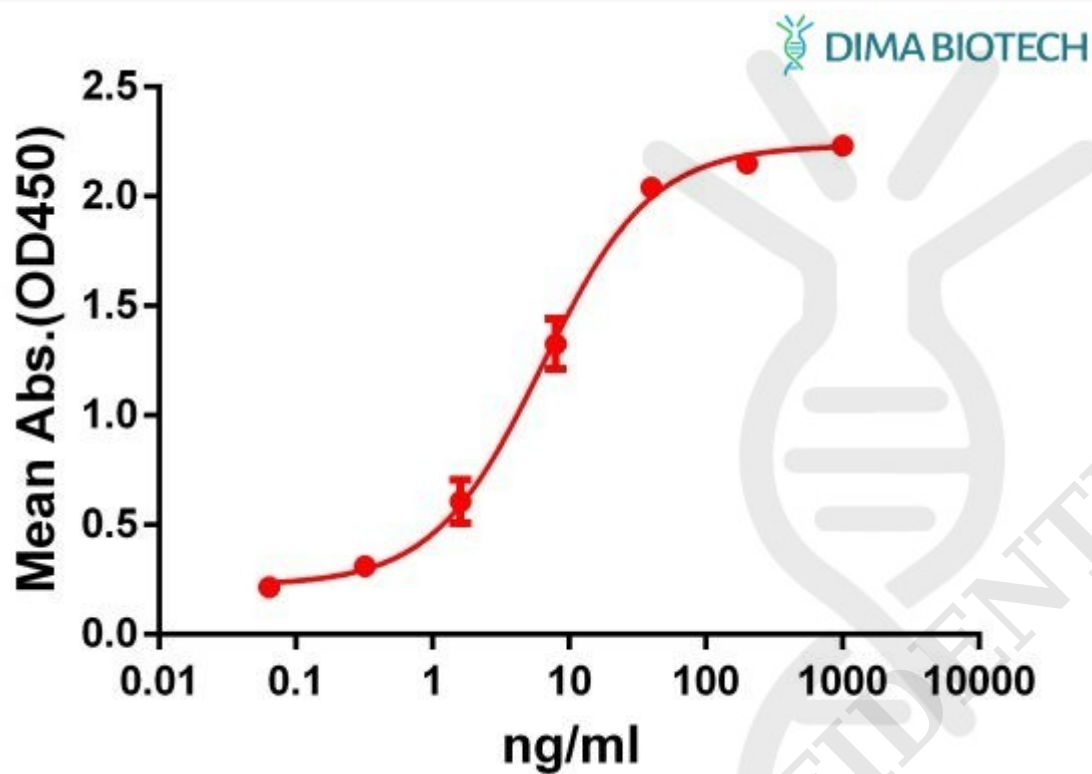


Figure 1. ELISA plate pre-coated by 2 μ g/ml (100 μ l/well) Human GPRC5D protein, hFc-His tagged protein ([getskuurl sku="PME100066"]) can bind Rabbit anti-GPRC5D monoclonal antibody (clone: **DM61**) in a linear range of 1-100 ng/ml.

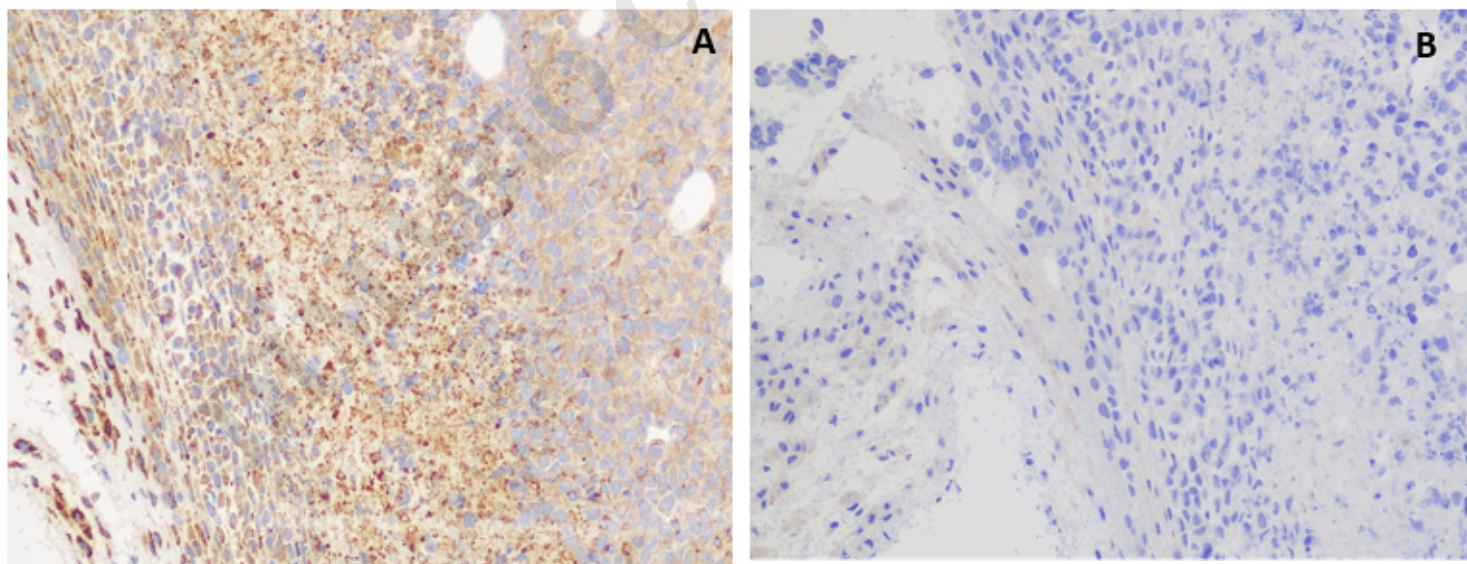


Figure 2. IHC staining of H929 cells **A.** with rabbit anti-GPRC5D mAb (Cat# DME100061) at 5.9 μ g/ml. **B.** with another anti-GPRC5D mAb (Cat# DME100090) at 8.8 μ g/ml. DME100061 can specifically react with GPRC5D in IHC application.

