

PRODUCT INFORMATION

Common Name	LM305
Conjugate	Unconjugated
Synonyms	GPRC5D
Applications	Flow Cyt
Recommended Dilutions	Flow Cyt 1:100
Formulation & Reconstitution	Lyophilized from sterile PBS, pH 7.4. Normally 5% - 8% trehalose is added as protectants before lyophilization. Please see Certificate of Analysis for specific instructions.
Host Species	Humanized
IgG type	IgG1
Reactivity	Human
Target	GPRC5D
Uniprot ID	Q9NZD1
Description	Anti-GPRC5D(LM305 biosimilar) mAb
Delivery	In Stock
Storage & Shipping	Store at -20°C to -80°C for 12 months in lyophilized form. After reconstitution, if not intended for use within a month, aliquot and store at -80°C (Avoid repeated freezing and thawing). Lyophilized antibodies are shipped at ambient temperature.
Background	Research grade biosimilar. Not for use in therapeutic or diagnostic procedures for humans or animals.
Usage	Research use only
DIMA Disclaimer	All DIMA recombinant antibodies are genuinely generated by DIMA Biotech. They are all under patent application. Any protein sequencing or reverse engineering attempt is prohibited. We are actively scrutinizing all patent application to ensure no IP infringement.



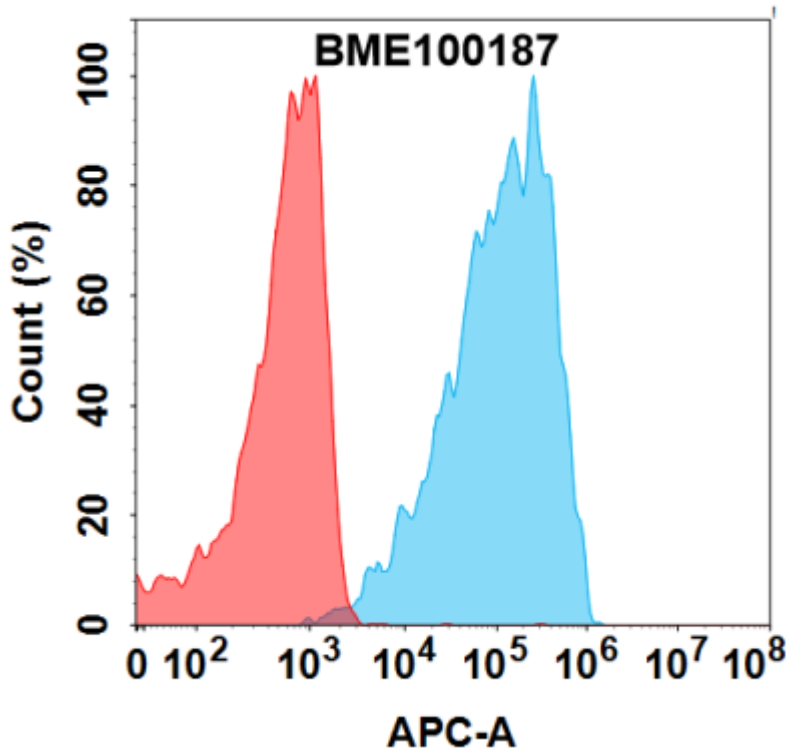


Figure 1. Flow cytometry analysis with 1 μ g/mL Anti-GPRC5D(LM305 biosimilar) mAb (BME100187) on Expi293 cells transfected with Human GPRC5D protein (Blue histogram) or Expi293 transfected with irrelevant protein (Red histogram).

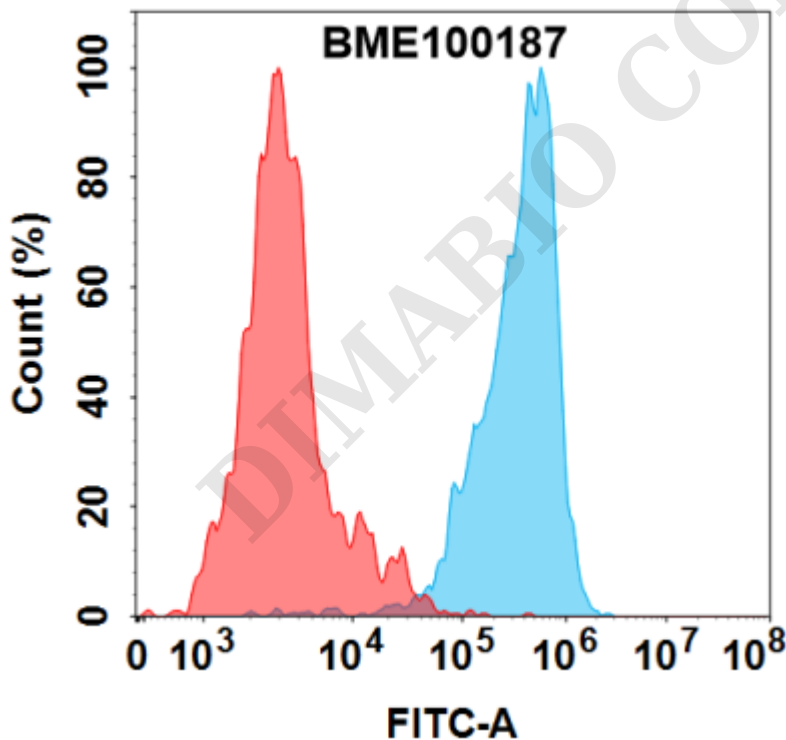


Figure 2. GPRC5D protein is highly expressed on the surface of K562-GPRC5D cell membrane. Flow cytometry analysis with 1 μ g/mL Anti-GPRC5D(LM305 biosimilar) mAb (BME100187) on K562-GPRC5D cells (Blue histogram) or isotype control mAb (Red histogram) on K562 cells.

