

**PRODUCT INFORMATION**

<b>Common Name</b>	MM-121,MM121,SAR256212
<b>Synonyms</b>	HER3, ERBB3
<b>Applications</b>	ELISA, Flow Cyt
<b>Recommended Dilutions</b>	ELISA 1:5000-10000, Flow Cyt 1:100
<b>Formulation &amp; Reconstitution</b>	Lyophilized from sterile PBS, pH 7.4. Normally 5% - 8% trehalose is added as protectants before lyophilization. Please see Certificate of Analysis for specific instructions of reconstitution.
<b>Host Species</b>	Homo sapiens
<b>IgG type</b>	IgG2(S257A)
<b>Reactivity</b>	Human
<b>Target</b>	HER3
<b>Uniprot ID</b>	P21860
<b>Description</b>	Anti-Her3(seribantumab biosimilar) mAb
<b>Delivery</b>	In Stock
<b>Storage &amp; Shipping</b>	Store at -20°C to -80°C for 12 months in lyophilized form. After reconstitution, if not intended for use within a month, aliquot and store at -80°C (Avoid repeated freezing and thawing). Lyophilized antibodies are shipped at ambient temperature.
<b>Background</b>	Research grade biosimilar. Not for use in therapeutic or diagnostic procedures for humans or animals.
<b>Usage</b>	Research use only
<b>Conjugate</b>	Unconjugated

DIMA BIO CONFIDENTIAL



## Anti-Her3(seribantumab biosimilar) mAb ELISA

0.2  $\mu\text{g}$  of Human Her3, His tagged protein per well

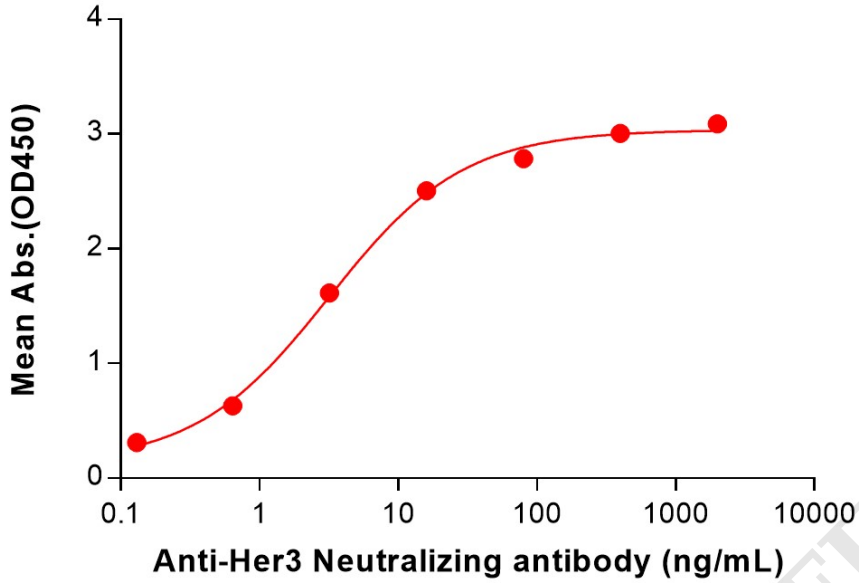


Figure 1. ELISA plate pre-coated by 2  $\mu\text{g}/\text{mL}$  (100  $\mu\text{L}/\text{well}$ ) Human Her3 Protein, His Tag (PME100088) can bind Anti-Her3(seribantumab biosimilar) mAb (BME100244) in a linear range of 0.13-16 ng/mL.

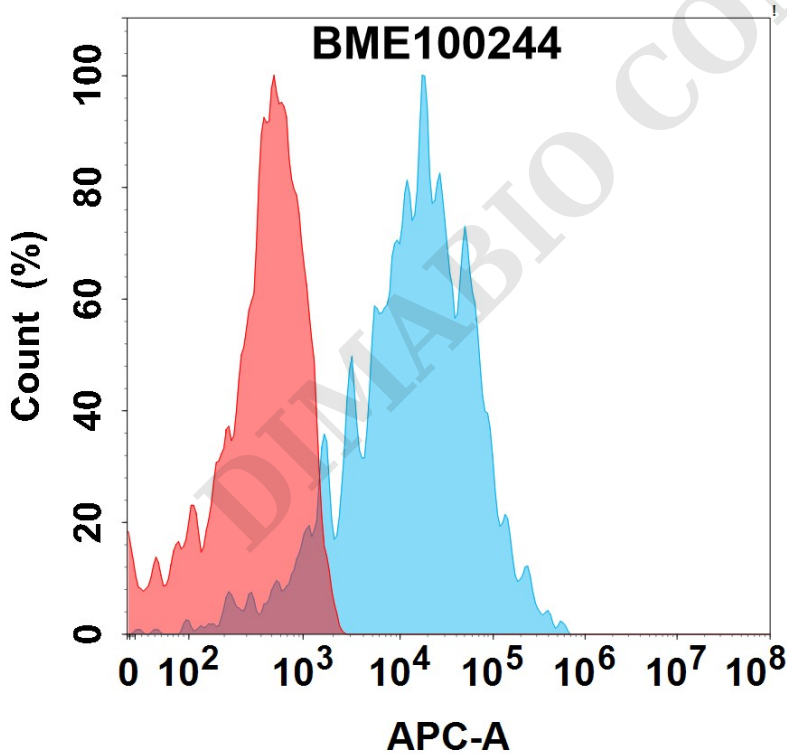


Figure 2. Flow cytometry analysis with 1 $\mu\text{g}/\text{mL}$  Anti-Her3(seribantumab biosimilar) mAb (BME100244) on Expi293 cells transfected with Human Her3 protein (Blue histogram) or Expi293 transfected with irrelevant protein (Red histogram).

