

PRODUCT INFORMATION

Clone ID	DM133
Target	HVEM
Synonyms	ATAR; CD270; HVEA; HVEM; LIGHTR; TR2
Host Species	Rabbit
Description	Anti-HVEM antibody(DM133); Rabbit mAb
Delivery	In Stock
Uniprot ID	Q92956
IgG type	Rabbit IgG
Clonality	Monoclonal
Reactivity	Human
Applications	ELISA; Flow Cyt
Recommended Dilutions	ELISA 1:5000-10000; Flow Cyt 1:100
Purification	Purified from cell culture supernatant by affinity chromatography
Formulation & Reconstitution	Lyophilized from sterile PBS, pH 7.4. Normally 5% - 8% trehalose is added as protectants before lyophilization. Please see Certificate of Analysis for specific instructions of reconstitution.
Storage & Shipping	Store at -20°C to -80°C for 12 months in lyophilized form. After reconstitution, if not intended for use within a month, aliquot and store at -80°C (Avoid repeated freezing and thawing). Lyophilized proteins are shipped at ambient temperature.
Background	This gene encodes a member of the TNF (tumor necrosis factor) receptor superfamily. The encoded protein functions in signal transduction pathways that activate inflammatory and inhibitory T-cell immune response. It binds herpes simplex virus (HSV) viral envelope glycoprotein D (gD); mediating its entry into cells. Alternative splicing results in multiple transcript variants.
Usage	Research use only
Conjugate	Unconjugated



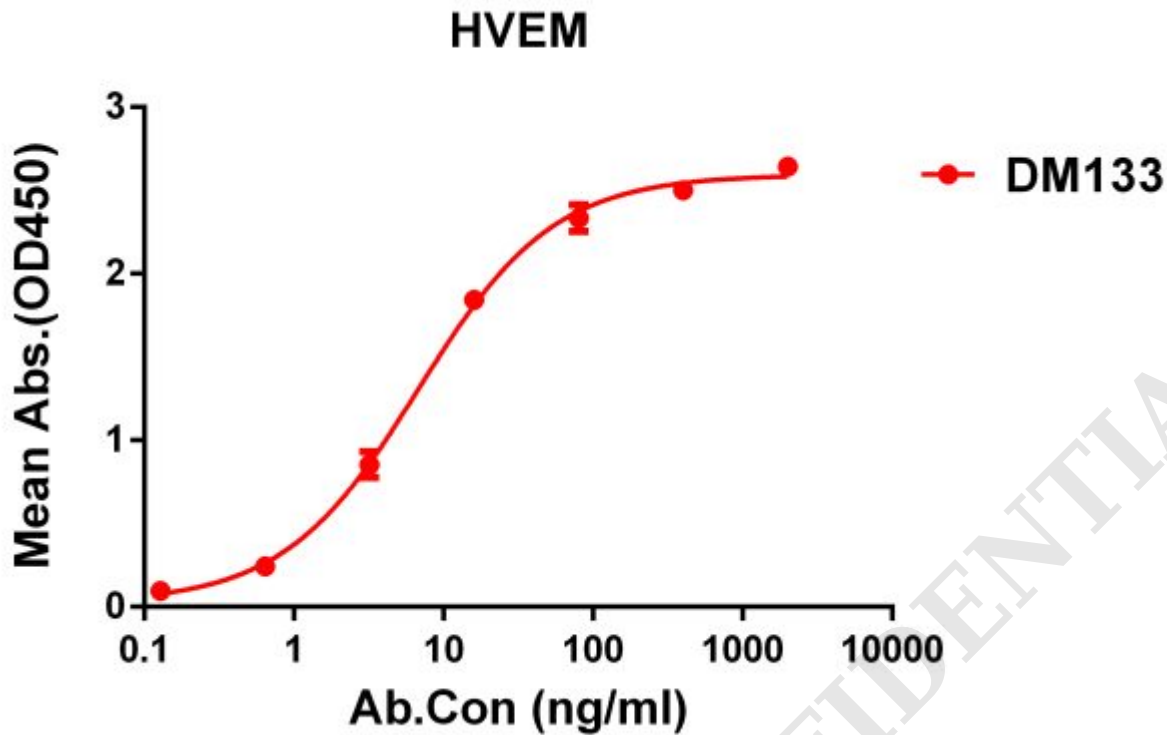


Figure 1. ELISA plate pre-coated by 1 $\mu\text{g/ml}$ (100 $\mu\text{l/well}$) Human HVEM protein, His tagged protein ([getskuurl sku="PME100273"]) can bind Rabbit anti-HVEM monoclonal antibody(**clone: DM133**) in a linear range of 0. 1-12 ng/ml.

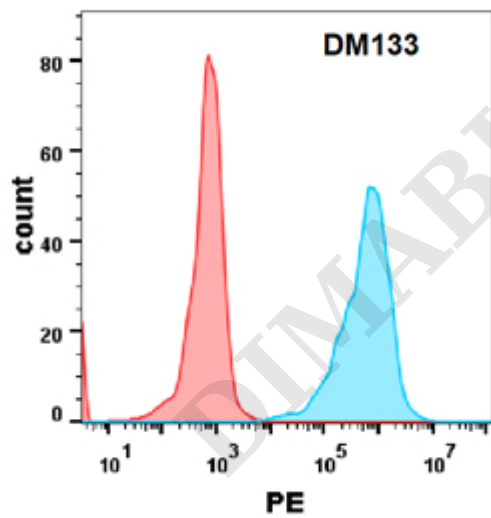


Figure 2. Flow cytometry analysis with Anti-HVEM (**DM133**) on Expi293 cells transfected with human HVEM (Blue histogram) or Expi293 transfected with irrelevant protein(Red histogram).

