

PRODUCT INFORMATION

Clone ID	DMC221
Target	IFNAR1
Synonyms	Interferon alpha:beta receptor 1;IFN-R-1;IFN-alpha:beta receptor 1;CRF2-1;Type I interferon receptor 1
Host Species	Rabbit
Description	Anti-IFNAR1 antibody(DMC221); IgG1 Chimeric mAb
Delivery	In Stock
Uniprot ID	P17181
IgG type	Rabbit/Human Fc chimeric IgG1
Clonality	Monoclonal
Reactivity	Human
Applications	ELISA; Flow Cyt
Recommended Dilutions	ELISA 1:5000-10000; Flow Cyt 1:100
Purification	Purified from cell culture supernatant by affinity chromatography
Formulation & Reconstitution	Lyophilized from sterile PBS, pH 7.4. Normally 5 % - 8% trehalose is added as protectants before lyophilization. Please see Certificate of Analysis for specific instructions of reconstitution.
Storage & Shipping	Store at -20°C to -80°C for 12 months in lyophilized form. After reconstitution, if not intended for use within a month, aliquot and store at -80°C (Avoid repeated freezing and thawing). Lyophilized proteins are shipped at ambient temperature.
Background	The protein encoded by this gene is a type I membrane protein that forms one of the two chains of a receptor for interferons alpha and beta. Binding and activation of the receptor stimulates Janus protein kinases; which in turn phosphorylate several proteins; including STAT1 and STAT2. The protein belongs to the type II cytokine receptor family and functions as an antiviral factor.
Usage	Research use only



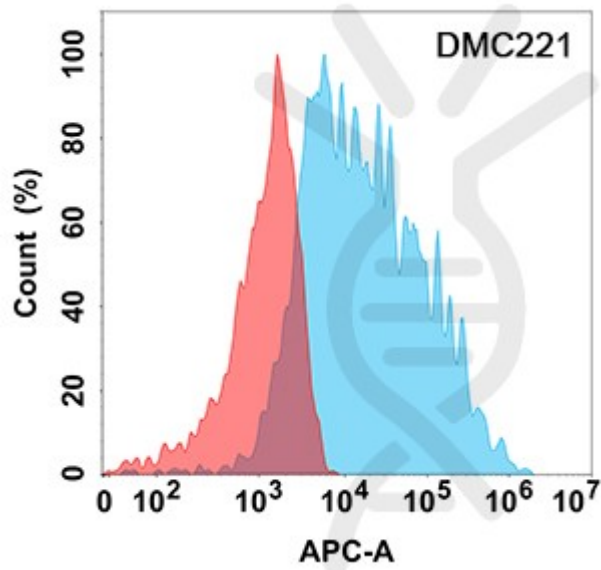


Figure 1. Flow cytometry analysis with Anti-IFNAR1 (DMC221) on Expi293 cells transfected with human IFNAR1 (Blue histogram) or Expi293 transfected with irrelevant protein (Red histogram).

DIMABIO CONFIDENTIAL

