

PRODUCT INFORMATION

Clone ID	DMC422
Target	IGFBP7
Synonyms	IBP-7; TAF; IGFBP-rP1; MAC25 protein
Host Species	Rabbit
Description	Anti-IGFBP7 antibody(DMC422); IgG1 Chimeric mAb
Delivery	In Stock
Uniprot ID	Q16270
IgG type	Rabbit/Human Fc chimeric IgG1
Clonality	Monoclonal
Reactivity	Human
Applications	Flow Cyt
Recommended Dilutions	Flow Cyt 1:100
Purification	Purified from cell culture supernatant by affinity chromatography
Formulation & Reconstitution	Lyophilized from sterile PBS, pH 7.4. Normally 5 % - 8% trehalose is added as protectants before lyophilization. Please see Certificate of Analysis for specific instructions of reconstitution.
Storage & Shipping	Store at -20°C to -80°C for 12 months in lyophilized form. After reconstitution, if not intended for use within a month, aliquot and store at -80°C (Avoid repeated freezing and thawing). Lyophilized proteins are shipped at ambient temperature.
Background	This gene encodes a member of the insulin-like growth factor (IGF)-binding protein (IGFBP) family. IGFBPs bind IGFs with high affinity; and regulate IGF availability in body fluids and tissues and modulate IGF binding to its receptors. This protein binds IGF-I and IGF-II with relatively low affinity; and belongs to a subfamily of low-affinity IGFBPs. It also stimulates prostacyclin production and cell adhesion. Alternatively spliced transcript variants encoding different isoforms have been described for this gene; and one variant has been associated with retinal arterial macroaneurysm (PMID:21835307).
Usage	Research use only



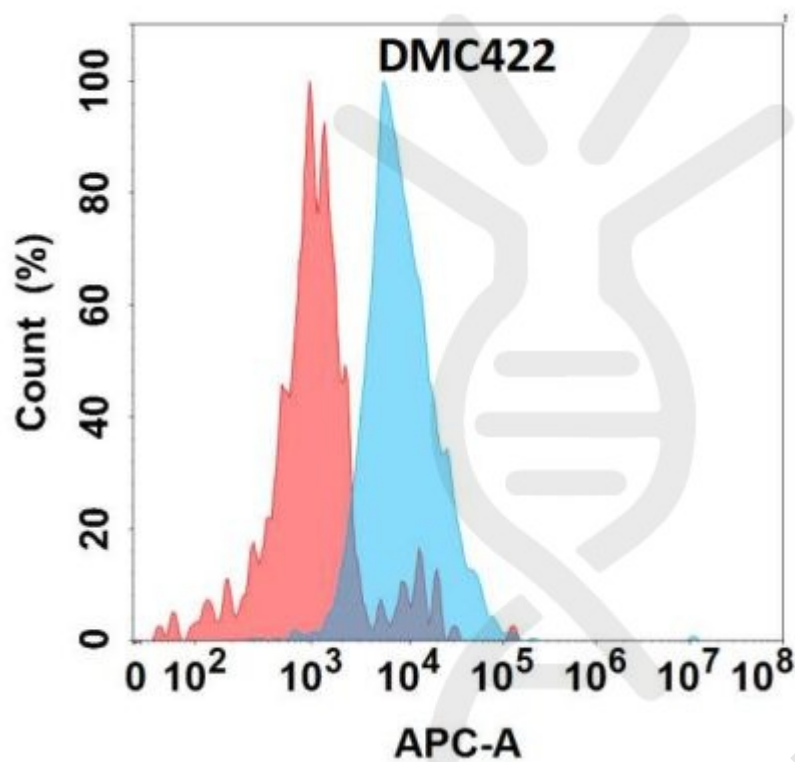


Figure 1. Flow cytometry analysis with Anti-IGFBP7 (DMC422) on Expi293 cells transfected with human IGFBP7 (Blue histogram) or Expi293 transfected with irrelevant protein (Red histogram).

DIMABIO CONFIDENTIAL

