

PRODUCT INFORMATION

| | |
|---|---|
| Common Name | ASLAN004, ASLAN-004, CSL-334 |
| Synonyms | IL13R; IL13RA; CD213a1; CT19 |
| Applications | ELISA, Flow Cyt |
| Recommended Dilutions | ELISA 1:5000-10000, Flow Cyt 1:100 |
| Formulation & Reconstitution | Lyophilized from sterile PBS, pH 7.4. Normally 5% - 8% trehalose is added as protectants before lyophilization. Please see Certificate of Analysis for specific instructions of reconstitution. |
| Host Species | Homo sapiens |
| IgG type | IgG4 |
| Reactivity | Human |
| Target | IL13RA1 |
| Uniprot ID | P78552 |
| Description | Anti-IL13RA1(eblasakimab biosimilar) mAb |
| Delivery | In Stock |
| Storage & Shipping | Store at -20°C to -80°C for 12 months in lyophilized form. After reconstitution, if not intended for use within a month, aliquot and store at -80°C (Avoid repeated freezing and thawing). Lyophilized antibodies are shipped at ambient temperature. |
| Background | Research grade biosimilar. Not for use in therapeutic or diagnostic procedures for humans or animals. |
| Usage | Research use only |
| Conjugate | Unconjugated |



Anti-IL13RA1(eblasakimab biosimilar) mAb ELISA

0.2 µg of Human IL13RA1, His tagged protein per well

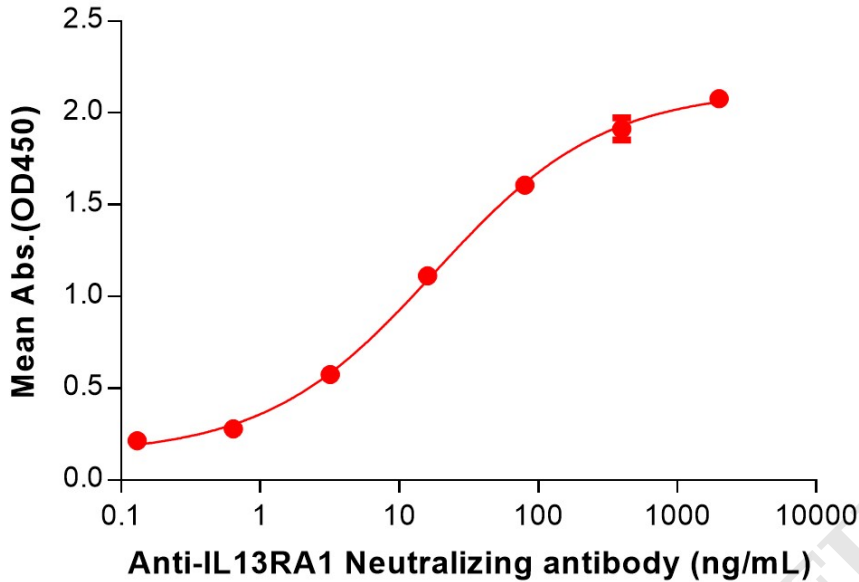


Figure 1. ELISA plate pre-coated by 2 µg/mL (100 µL/well) Human IL13RA1 Protein, His Tag (PME100291) can bind Anti-IL13RA1(eblasakimab biosimilar) mAb (BME100240) in a linear range of 0.64-80 ng/mL.

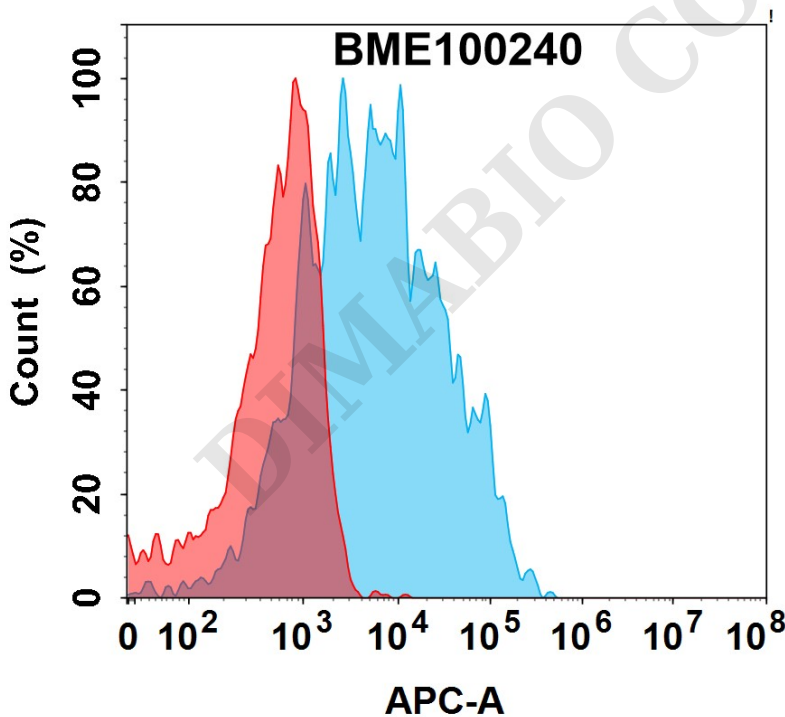


Figure 2. Flow cytometry analysis with 1µg/mL Anti-IL13RA1(eblasakimab biosimilar) mAb (BME100240) on Expi293 cells transfected with Human IL13RA and IL4RA protein (Blue histogram) or Expi293 transfected with Human IL4RA protein (Red histogram).

