

PRODUCT INFORMATION

Clone ID	DM206
Target	IL15RA
Synonyms	CD215
Host Species	Rabbit
Description	Anti-IL15RA antibody(DM206); Rabbit mAb
Delivery	In Stock
Uniprot ID	Q13261
IgG type	Rabbit IgG
Clonality	Monoclonal
Reactivity	Human
Applications	ELISA; Flow Cyt
Recommended Dilutions	ELISA 1:5000-10000; Flow Cyt 1:100
Purification	Purified from cell culture supernatant by affinity chromatography
Formulation & Reconstitution	Lyophilized from sterile PBS, pH 7.4. Normally 5 % - 8% trehalose is added as protectants before lyophilization. Please see Certificate of Analysis for specific instructions of reconstitution.
Storage & Shipping	Store at -20°C to -80°C for 12 months in lyophilized form. After reconstitution, if not intended for use within a month, aliquot and store at -80°C (Avoid repeated freezing and thawing). Lyophilized proteins are shipped at ambient temperature.
Background	This gene encodes a cytokine receptor that specifically binds interleukin 15 (IL15) with high affinity. The receptors of IL15 and IL2 share two subunits; IL2R beta and IL2R gamma. This forms the basis of many overlapping biological activities of IL15 and IL2. The protein encoded by this gene is structurally related to IL2R alpha; an additional IL2-specific alpha subunit necessary for high affinity IL2 binding. Unlike IL2RA; IL15RA is capable of binding IL15 with high affinity independent of other subunits; which suggests distinct roles between IL15 and IL2. This receptor is reported to enhance cell proliferation and expression of apoptosis inhibitor BCL2L1:BCL2-XL and BCL2. Multiple alternatively spliced transcript variants of this gene have been reported.
Usage	Research use only
Conjugate	Unconjugated



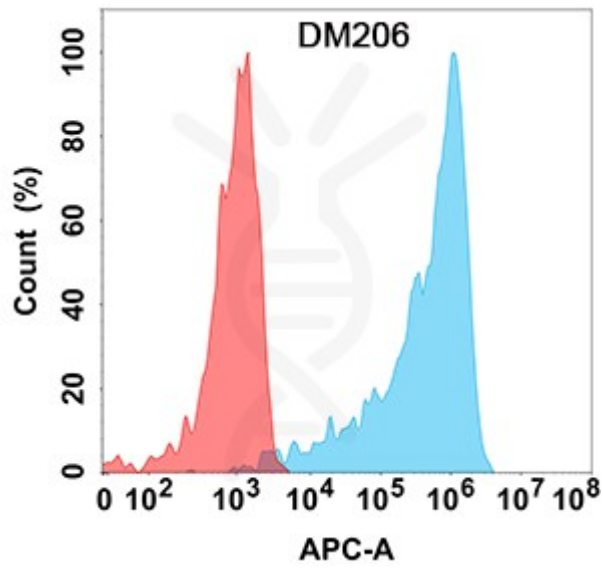


Figure 1. Flow cytometry analysis with Anti-IL15RA (DM206) on Expi293 cells transfected with human IL15RA (Blue histogram) or Expi293 transfected with irrelevant protein (Red histogram).

DIMABIO CONFIDENTIAL

