

PRODUCT INFORMATION

Common Name	ACZ885
Synonyms	IL-1 beta;IL1F2
Applications	ELISA; Flow Cyt
Recommended Dilutions	ELISA 1:5000-10000; Flow Cyt 1:100
Formulation & Reconstitution	Lyophilized from sterile PBS, pH 7.4. Normally 5% - 8% trehalose is added as protectants before lyophilization. Please see Certificate of Analysis for specific instructions of reconstitution.
Host Species	Homo sapiens
IgG type	IgG1
Reactivity	Human
Target	IL1B
Uniprot ID	P01584
Description	Anti-IL1B(canakinumab biosimilar) mAb
Delivery	In Stock
Storage & Shipping	Store at -20°C to -80°C for 12 months in lyophilized form. After reconstitution, if not intended for use within a month, aliquot and store at -80°C (Avoid repeated freezing and thawing). Lyophilized proteins are shipped at ambient temperature.
Background	Research grade biosimilar. Not for use in therapeutic or diagnostic procedures for humans or animals.
Usage	Research use only
Conjugate	Unconjugated

CONFIDENTIAL



Anti-IL1B (canakinumab biosimilar) mAb ELISA

0.1 μ g of Human IL1B, hFc tagged protein per well

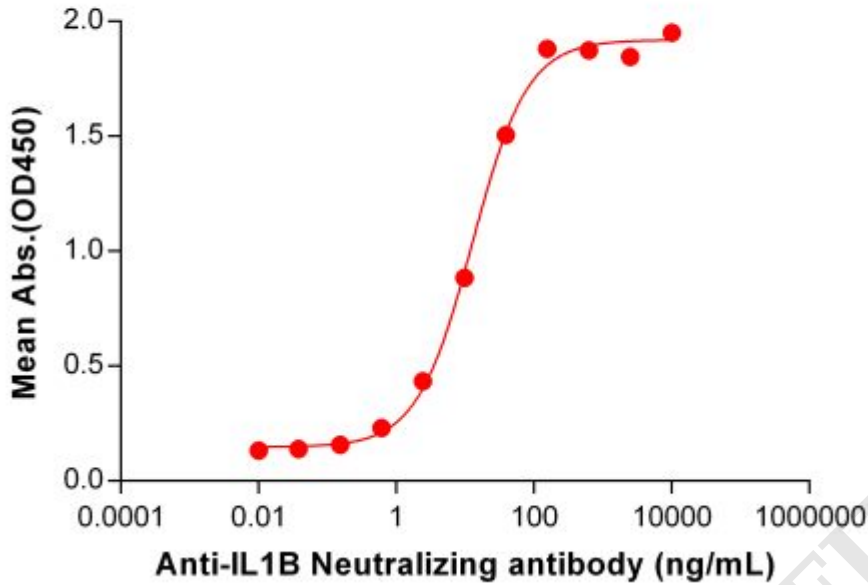


Figure 1. ELISA plate pre-coated by 1 μ g/mL (100 μ L/well) Human IL1B Protein, hFc Tag (PME100838) can bind Anti-IL1B Neutralizing antibody (BME100116) in a linear range of 0.61-156.25 ng/mL. In order to specifically detect BME100116, mouse anti-human Fab-specific antibody was used as detection antibody.

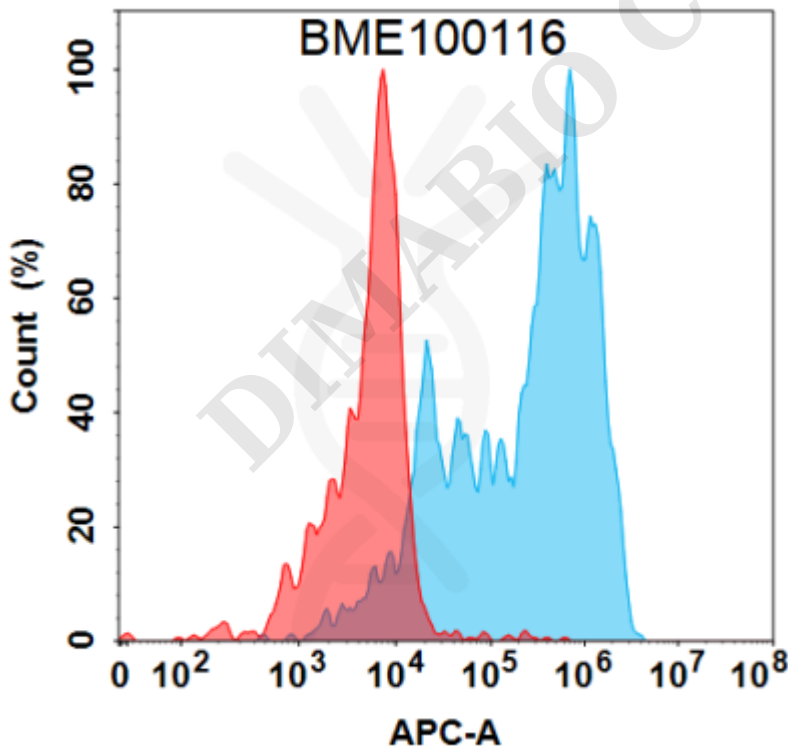


Figure 2. Flow cytometry analysis under cell membrane permeable condition with 1 μ g/mL Anti-IL1B (canakinumab biosimilar) mAb (BME100116) on Expi293 cells transfected with Human IL1B protein (Blue histogram) or Expi293 transfected with irrelevant protein (Red histogram).

