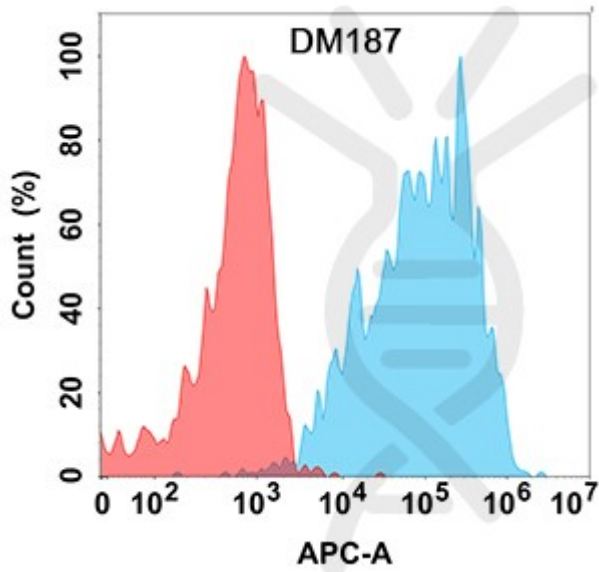


## PRODUCT INFORMATION

<b>Clone ID</b>	DM187
<b>Target</b>	IL2
<b>Synonyms</b>	IL-2; lymphokine; TCGF
<b>Host Species</b>	Rabbit
<b>Description</b>	Anti-IL2 antibody(DM187); Rabbit mAb
<b>Delivery</b>	In Stock
<b>Uniprot ID</b>	P60568
<b>IgG type</b>	Rabbit IgG
<b>Clonality</b>	Monoclonal
<b>Reactivity</b>	Human
<b>Applications</b>	ELISA; Flow Cyt
<b>Recommended Dilutions</b>	ELISA 1:5000-10000; Flow Cyt 1:100
<b>Purification</b>	Purified from cell culture supernatant by affinity chromatography
<b>Formulation &amp; Reconstitution</b>	Lyophilized from sterile PBS, pH 7.4. Normally 5 % - 8% trehalose is added as protectants before lyophilization. Please see Certificate of Analysis for specific instructions of reconstitution.
<b>Storage &amp; Shipping</b>	Store at -20°C to -80°C for 12 months in lyophilized form. After reconstitution, if not intended for use within a month, aliquot and store at -80°C (Avoid repeated freezing and thawing). Lyophilized proteins are shipped at ambient temperature.
<b>Background</b>	This gene is a member of the interleukin 2 (IL2) cytokine subfamily which includes IL4; IL7; IL9; IL15; IL21; erythropoietin; and thrombopoietin. The protein encoded by this gene is a secreted cytokine produced by activated CD4 and CD8 T lymphocytes; that is important for the proliferation of T and B lymphocytes. The receptor of this cytokine (IL2R) is a heterotrimeric protein complex whose gamma chain is also shared by IL4 and IL7. The expression of this gene in mature thymocytes is monoallelic; which represents an unusual regulatory mode for controlling the precise expression of a single gene. The targeted disruption of a similar gene in mice leads to ulcerative colitis-like disease; which suggests an essential role of this gene in the immune response to antigenic stimuli.
<b>Usage</b>	Research use only





**Figure 1.** Flow cytometry analysis with Anti-IL2 (DM187) on Expi293 cells transfected with human IL2 (Blue histogram) or Expi293 transfected with irrelevant protein (Red histogram).

