

PRODUCT INFORMATION

Clone ID	DMC225
Target	IL21R
Synonyms	CD360; IMD56; NILR
Host Species	Rabbit
Description	Anti-IL21R antibody(DMC225); IgG1 Chimeric mAb
Delivery	In Stock
Uniprot ID	Q9HBE5
IgG type	Rabbit/Human Fc chimeric IgG1
Clonality	Monoclonal
Reactivity	Human
Applications	ELISA; Flow Cyt
Recommended Dilutions	ELISA 1:5000-10000; Flow Cyt 1:100
Purification	Purified from cell culture supernatant by affinity chromatography
Formulation & Reconstitution	Lyophilized from sterile PBS, pH 7.4. Normally 5 % - 8% trehalose is added as protectants before lyophilization. Please see Certificate of Analysis for specific instructions of reconstitution.
Storage & Shipping	Store at -20°C to -80°C for 12 months in lyophilized form. After reconstitution, if not intended for use within a month, aliquot and store at -80°C (Avoid repeated freezing and thawing). Lyophilized proteins are shipped at ambient temperature.
Background	The protein encoded by this gene is a cytokine receptor for interleukin 21 (IL21). It belongs to the type I cytokine receptors; and has been shown to form a heterodimeric receptor complex with the common gamma-chain; a receptor subunit also shared by the receptors for interleukin 2; 4; 7; 9; and 15. This receptor transduces the growth promoting signal of IL21; and is important for the proliferation and differentiation of T cells; B cells; and natural killer (NK) cells. The ligand binding of this receptor leads to the activation of multiple downstream signaling molecules; including JAK1; JAK3; STAT1; and STAT3. Knockout studies of a similar gene in mouse suggest a role for this gene in regulating immunoglobulin production. Three alternatively spliced transcript variants have been described.
Usage	Research use only
Conjugate	Unconjugated



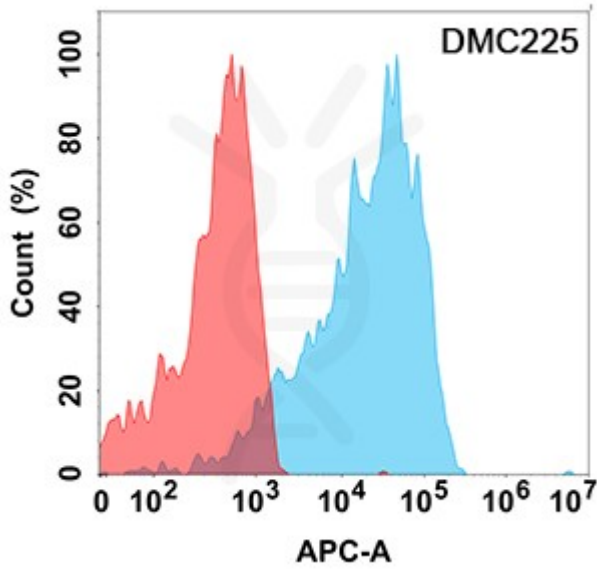


Figure 1. Flow cytometry analysis with Anti-IL21R (DMC225) on Expi293 cells transfected with human IL21R (Blue histogram) or Expi293 transfected with irrelevant protein (Red histogram).

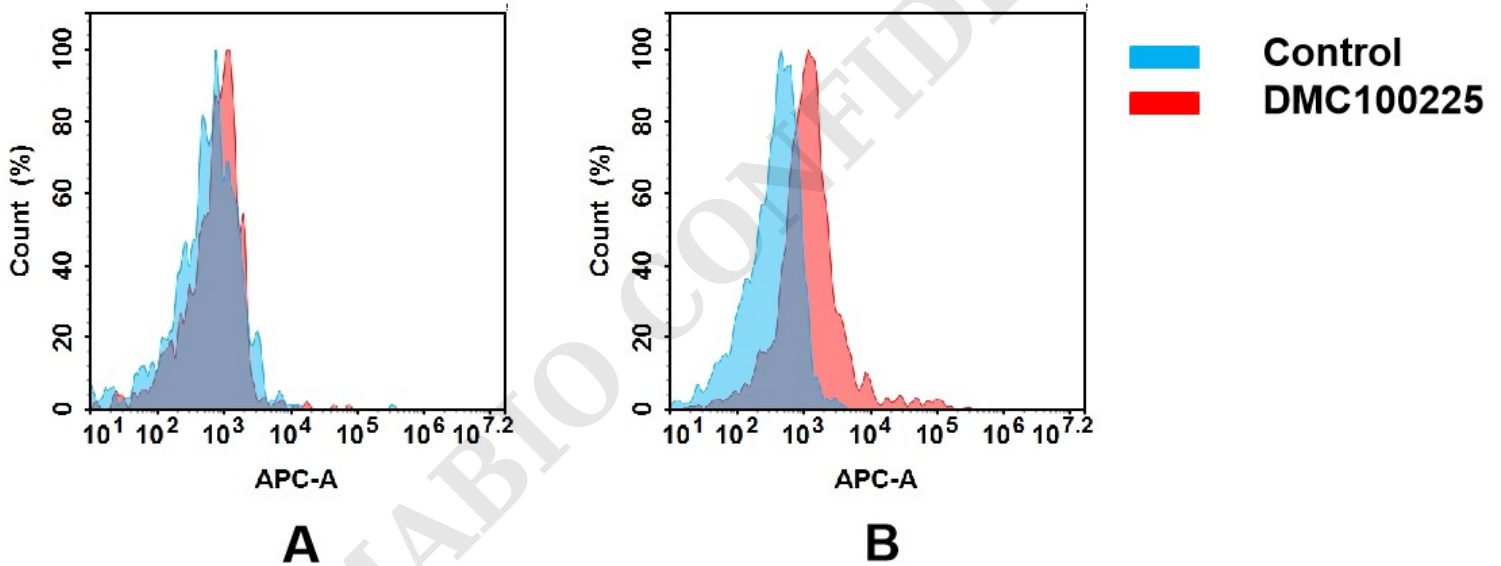


Figure 2. Flow cytometry analysis of antigen binding of anti-human IL21R mAb(DMC100225).

(A) DMC100225 does not bind to 293T cells that do not express IL21R.

(B) A clear peak shift of DMC100225 was seen compared to the control when incubated with IL21R-expressing Raji cells, indicating strong binding of DMC100225 to IL21R. Antibodies were incubated at 5 µg/mL.

