

PRODUCT INFORMATION

Common Name	CHI621
Synonyms	IL2RA;CD25;p55;IL2-RA;IL-2-RA
Applications	ELISA; Flow Cyt
Recommended Dilutions	ELISA 1:5000-10000; Flow Cyt 1:100
Formulation & Reconstitution	Lyophilized from sterile PBS, pH 7.4. Normally 5% - 8% trehalose is added as protectants before lyophilization. Please see Certificate of Analysis for specific instructions of reconstitution.
Host Species	Chimeric
IgG type	IgG1
Reactivity	Human
Target	IL2RA
Uniprot ID	P01589
Description	Anti-IL2RA (basiliximab biosimilar) mAb
Delivery	In Stock
Storage & Shipping	Store at -20°C to -80°C for 12 months in lyophilized form. After reconstitution, if not intended for use within a month, aliquot and store at -80°C (Avoid repeated freezing and thawing). Lyophilized proteins are shipped at ambient temperature.
Background	Research grade biosimilar. Not for use in therapeutic or diagnostic procedures for humans or animals.
Usage	Research use only
Conjugate	Unconjugated

DIMA BIO CONFIDENTIAL



Anti-IL2RA (basiliximab biosimilar) mAb ELISA

0.2 μ g of Human IL2RA, His Tagged protein per well

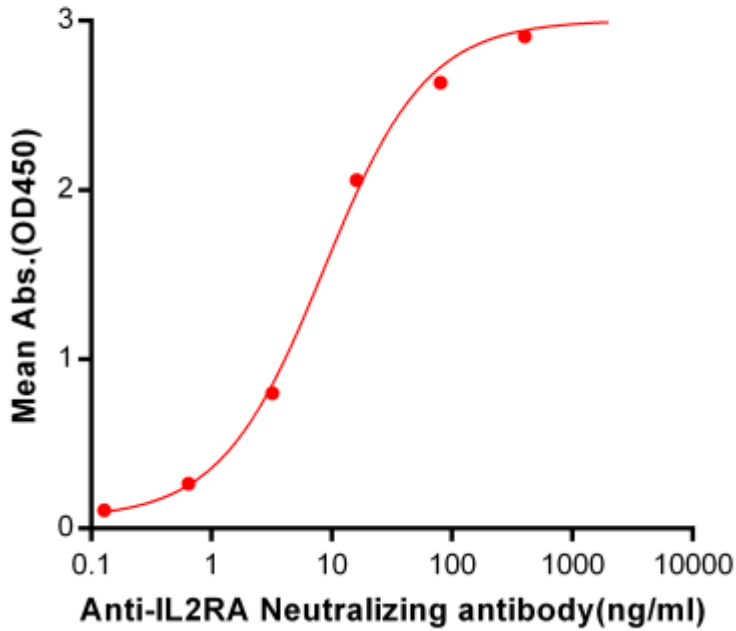


Figure 1. ELISA plate pre-coated by 2 μ g/ml (100 μ l/well) Human IL2RA, His tagged protein ([getskuurl sku="PME100098"]) can bind Anti-IL2RA Neutralizing antibody (BME100043) in a linear range of 0.64-400 ng/ml.

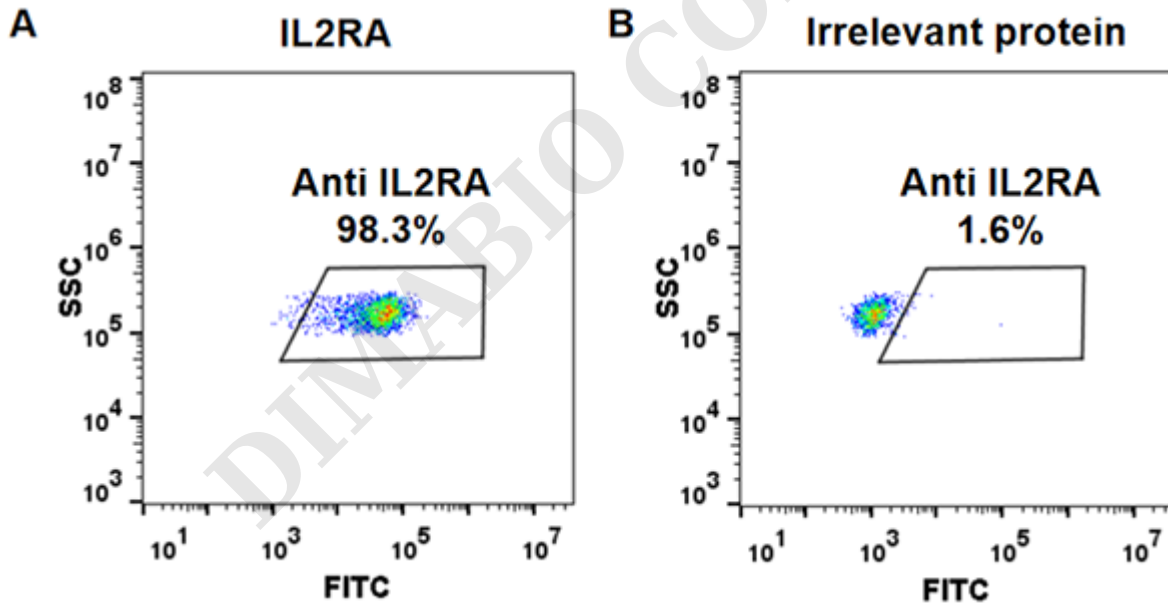


Figure 2. HEK293 cell line transfected with irrelevant protein (**B**) and human IL2RA (**A**) were surface stained with Anti-IL2RA mAb 1 μ g/ml (basiliximab) followed by Alexa 488-conjugated anti-human IgG secondary antibody.

