

PRODUCT INFORMATION

Common Name	ANTI-LY6E□DLYE-5953A□DLYE5953A□RG 7841
Conjugate	Unconjugated
Synonyms	RIGE; SCA2; RIG-E; SCA-2; TSA-1
Applications	ELISA, Flow Cyt
Recommended Dilutions	ELISA 1:5000-10000, Flow Cyt 1:100
Formulation & Reconstitution	Lyophilized from sterile PBS, pH 7.4. Normally 5 % - 8% trehalose is added as protectants before lyophilization. Please see Certificate of Analysis for specific instructions.
Host Species	Humanized
IgG type	IgG1
Reactivity	Human
Target	LY6E
Uniprot ID	Q16553
Description	Anti-LY6E(RG7841 biosimilar) mAb
Delivery	In Stock
Storage & Shipping	Store at -20°C to -80°C for 12 months in lyophilized form. After reconstitution, if not intended for use within a month, aliquot and store at -80°C (Avoid repeated freezing and thawing). Lyophilized antibodies are shipped at ambient temperature.
Background	Research grade biosimilar. Not for use in therapeutic or diagnostic procedures for humans or animals.
Usage	Research use only
DIMA Disclaimer	All DIMA recombinant antibodies are genuinely generated by DIMA Biotech. They are all under patent application. Any protein sequencing or reverse engineering attempt is prohibited. We are actively scrutinizing all patent application to ensure no IP infringement.



Anti-LY6E(RG7841 biosimilar) mAb ELISA
0.2 µg of Human LY6E, hFc tagged protein per well

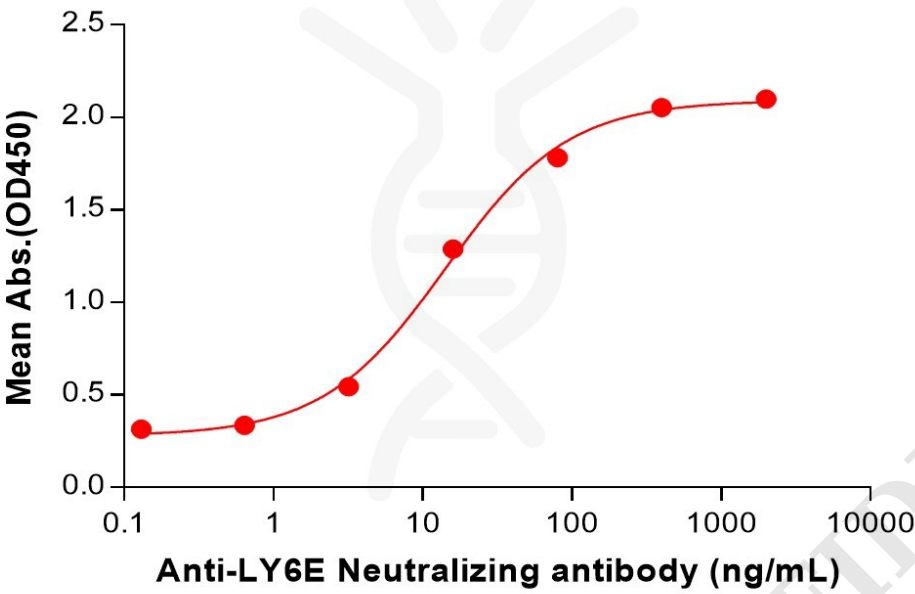


Figure 1. ELISA plate pre-coated by 2 µg/mL (100 µL/well) Human LY6E Protein, hFc Tag (PME101539) can bind Anti-LY6E(RG7841 biosimilar) mAb (BME100224) in a linear range of 3.20–80 ng/mL. In order to specifically detect BME100224, mouse anti-human Fab-specific antibody was used as detection antibody.

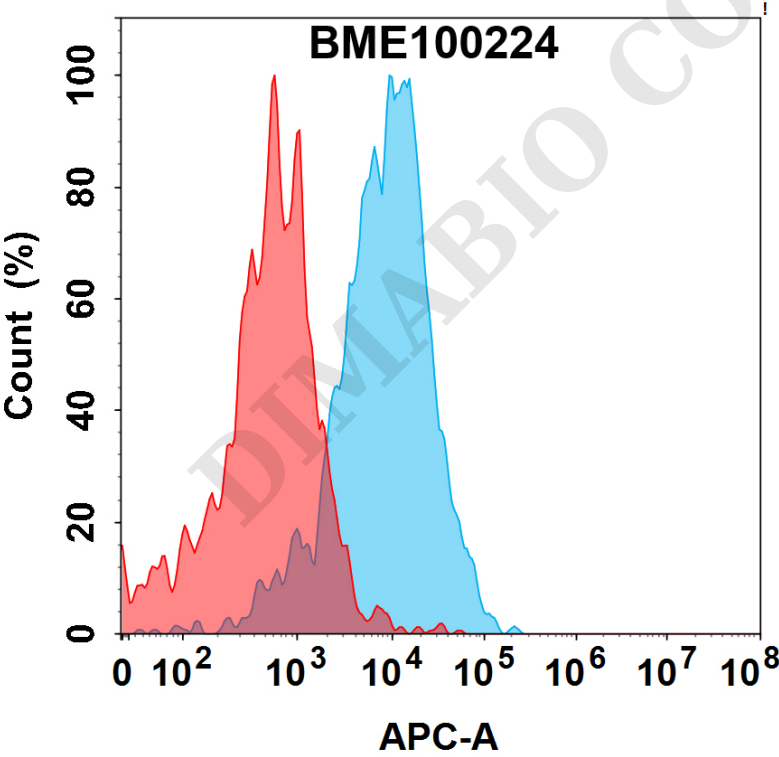


Figure 2. Flow cytometry analysis with 15µg/mL Anti-LY6E(RG7841 biosimilar) mAb (BME100224) on Expi293 cells transfected with Human LY6E protein (Blue histogram) or Expi293 transfected with irrelevant protein (Red histogram).

