

PRODUCT INFORMATION

| | |
|---|---|
| Clone ID | DMC437 |
| Target | M-CSF |
| Synonyms | CSF-1; MCSF |
| Host Species | Rabbit |
| Description | Anti-M-CSF antibody(DMC437); IgG1 Chimeric mAb |
| Delivery | In Stock |
| Uniprot ID | P09603 |
| IgG type | Rabbit/Human Fc chimeric IgG1 |
| Clonality | Monoclonal |
| Reactivity | Human |
| Applications | Flow Cyt |
| Recommended Dilutions | Flow Cyt 1:100 |
| Purification | Purified from cell culture supernatant by affinity chromatography |
| Formulation & Reconstitution | Lyophilized from sterile PBS, pH 7.4. Normally 5% - 8% trehalose is added as protectants before lyophilization. Please see Certificate of Analysis for specific instructions of reconstitution. |
| Storage & Shipping | Store at -20°C to -80°C for 12 months in lyophilized form. After reconstitution, if not intended for use within a month, aliquot and store at -80°C (Avoid repeated freezing and thawing). Lyophilized proteins are shipped at ambient temperature. |
| Background | The protein encoded by this gene is a cytokine that controls the production; differentiation; and function of macrophages. The active form of the protein is found extracellularly as a disulfide-linked homodimer; and is thought to be produced by proteolytic cleavage of membrane-bound precursors. The encoded protein may be involved in development of the placenta. Alternate splicing results in multiple transcript variants. |
| Usage | Research use only |
| Conjugate | Unconjugated |



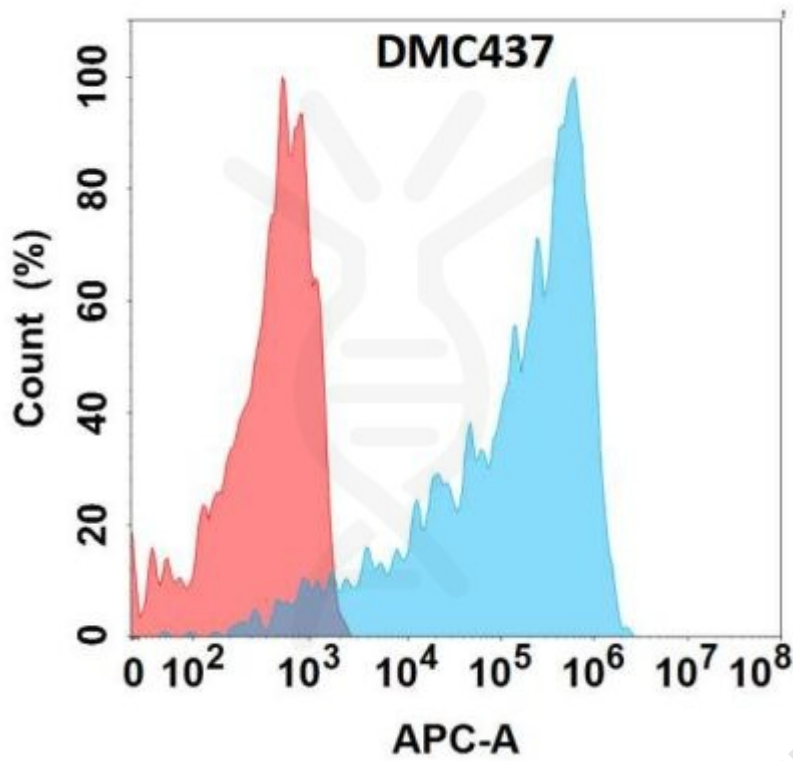


Figure 1. Flow cytometry analysis with Anti-M-CSF (DMC437) on Expi293 cells transfected with human M-CSF (Blue histogram) or Expi293 transfected with irrelevant protein (Red histogram).

