

PRODUCT INFORMATION

Common Name	MORAb-009
Conjugate	Unconjugated
Synonyms	MSLN;Mesothelin;MPF
Applications	ELISA; Flow Cyt
Recommended Dilutions	ELISA 1:5000-10000; Flow Cyt 1:100
Formulation & Reconstitution	Lyophilized from sterile PBS, pH 7.4. Normally 5% - 8% trehalose is added as protectants before lyophilization. Please see Certificate of Analysis for specific instructions of reconstitution.
Host Species	Chimeric
IgG type	IgG1
Reactivity	Human
Target	MSLN
Uniprot ID	Q13421
Description	Anti-Mesothelin (amatuximab biosimilar) mAb
Delivery	In Stock
Storage & Shipping	Store at -20°C to -80°C for 12 months in lyophilized form. After reconstitution, if not intended for use within a month, aliquot and store at -80°C (Avoid repeated freezing and thawing). Lyophilized proteins are shipped at ambient temperature.
Background	Research grade biosimilar. Not for use in therapeutic or diagnostic procedures for humans or animals.
Usage	Research use only
DIMA Disclaimer	All DIMA recombinant antibodies are genuinely generated by DIMA Biotech. They are all under patent application. Any protein sequencing or reverse engineering attempt is prohibited. We are actively scrutinizing all patent application to ensure no IP infringement.

CONFIDENTIAL



Anti-Mesothelin (amatuximab biosimilar) mAb ELISA

0.2 μg of Mesothelin(296-580), mFc-His Tagged protein per well

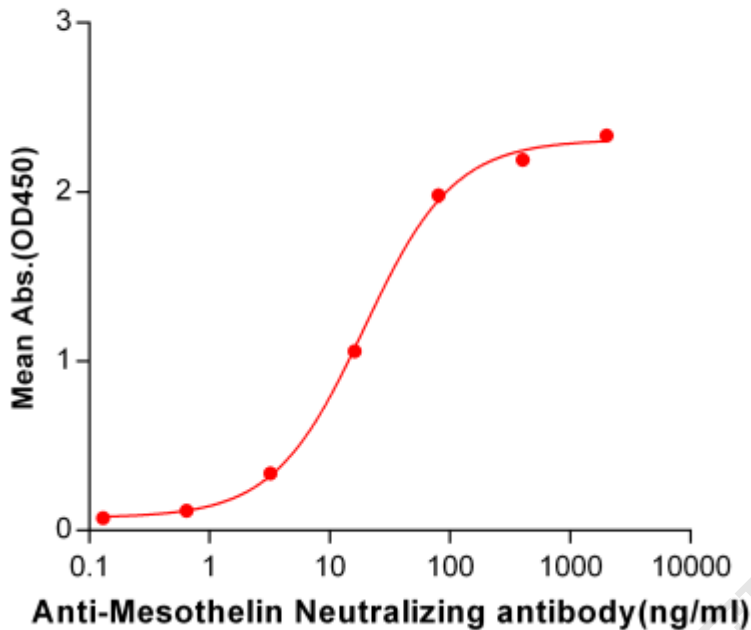


Figure 1. ELISA plate pre-coated by 2 $\mu\text{g}/\text{ml}$ (100 $\mu\text{l}/\text{well}$) Human Mesothelin, mFc-His tagged protein ([getskuurl sku="PME100031"]) can bind Anti-Mesothelin Neutralizing antibody in a linear range of 3.2-80.0 ng/ml.

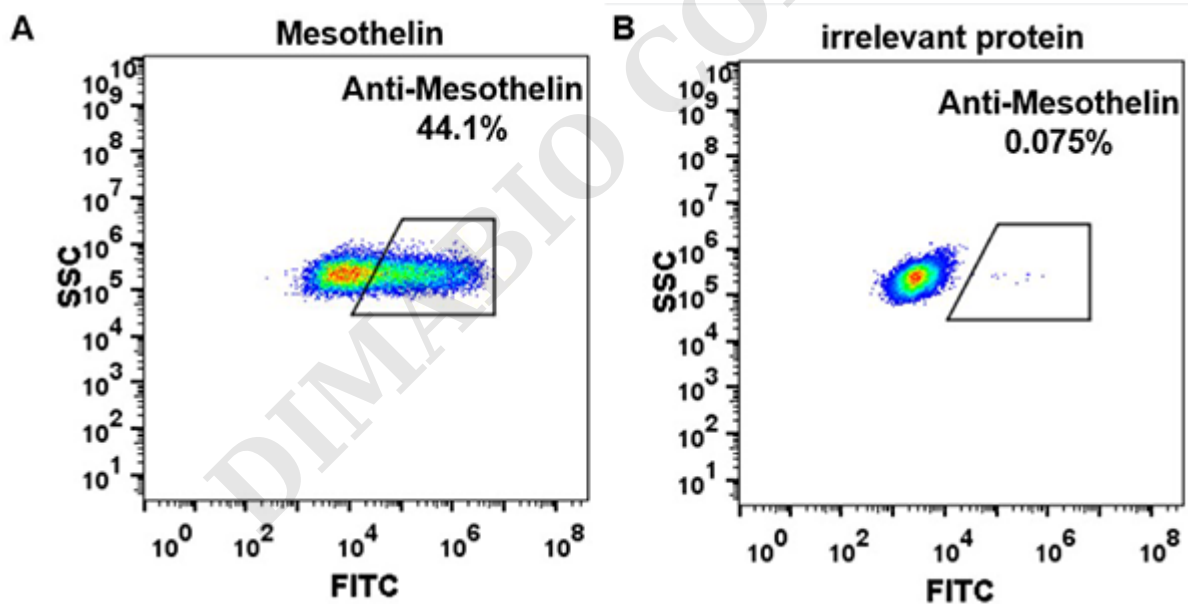


Figure 2. HEK293 cell line transfected with irrelevant protein (**B**) and human Mesothelin (**A**) were surface stained with anti-Mesothelin neutralizing antibody 1 $\mu\text{g}/\text{ml}$ (amatuximab) followed by Alexa 488-conjugated anti-human IgG secondary antibody.

