

**PRODUCT INFORMATION**

<b>Clone ID</b>	9C4
<b>Target</b>	MMAE
<b>Synonyms</b>	N.A.
<b>Host Species</b>	Rabbit
<b>Description</b>	Anti-MMAE antibody(9C4); Rabbit mAb
<b>Delivery</b>	In Stock
<b>Uniprot ID</b>	N.A.
<b>IgG type</b>	Rabbit IgG
<b>Clonality</b>	Monoclonal
<b>Reactivity</b>	N.A.
<b>Applications</b>	ELISA
<b>Recommended Dilutions</b>	ELISA 1:5000-10000
<b>Purification</b>	Purified from cell culture supernatant by affinity chromatography
<b>Formulation &amp; Reconstitution</b>	Lyophilized from sterile PBS, pH 7.4. Normally 5% - 8% trehalose is added as protectants before lyophilization. Please see Certificate of Analysis for specific instructions of reconstitution. Store at -20°C to -80°C for 12 months in lyophilized form. After reconstitution, if not intended for use within a month, aliquot and store at -80°C (Avoid repeated freezing and thawing). Lyophilized proteins are shipped at ambient temperature.
<b>Storage &amp; Shipping</b>	
<b>Background</b>	N.A.
<b>Usage</b>	Research use only
<b>Conjugate</b>	Unconjugated

CONFIDENTIAL



**ELISA assay to evaluate Anti-MMAE antibody**  
0.2 $\mu$ g Human IgG-MMAE per well

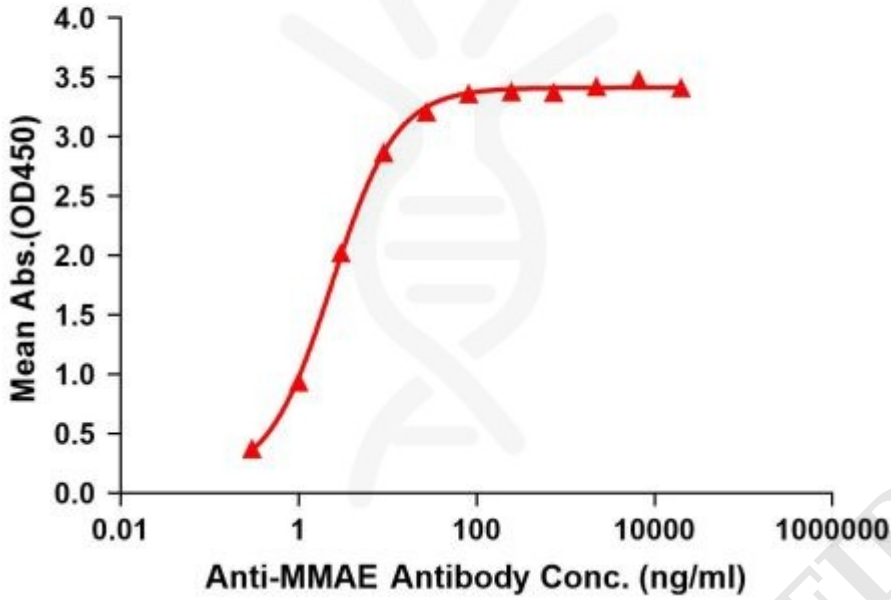


Figure1. Elisa plates were pre-coated with IgG-MMAE (0.2 $\mu$ g/per well). Serial diluted anti-MMAE monoclonal antibody (DME101005) solutions were added, washed, and incubated with secondary antibody before Elisa reading. From above data, the EC50 for anti-MMAE monoclonal antibody binding with IgG-MMAE is 2.370ng/ml.

