

PRODUCT INFORMATION

Clone ID	DM159
Target	NTB-A
Synonyms	NTB-A;SLAMF6;Ly108;NK-T-B-antigen;CD352;KALI
Host Species	Rabbit
Description	Anti-NTB-A antibody(DM159); Rabbit mAb
Delivery	In Stock
Uniprot ID	Q96DU3
IgG type	Rabbit IgG
Clonality	Monoclonal
Reactivity	Human
Applications	ELISA; Flow Cyt; WB; IHC
Recommended Dilutions	ELISA 1:5000-10000; Flow Cyt 1:100; WB 1:1000; IHC 1:100
Purification	Purified from cell culture supernatant by affinity chromatography
Formulation & Reconstitution	Lyophilized from sterile PBS, pH 7.4. Normally 5 % - 8% trehalose is added as protectants before lyophilization. Please see Certificate of Analysis for specific instructions of reconstitution. Store at -20°C to -80°C for 12 months in lyophilized form. After reconstitution, if not intended for use within a month, aliquot and store at -80°C (Avoid repeated freezing and thawing). Lyophilized proteins are shipped at ambient temperature.
Storage & Shipping	
Background	The protein encoded by this gene is a type I transmembrane protein; belonging to the CD2 subfamily of the immunoglobulin superfamily. This encoded protein is expressed on Natural killer (NK); T; and B lymphocytes. It undergoes tyrosine phosphorylation and associates with the Src homology 2 domain-containing protein (SH2D1A) as well as with SH2 domain-containing phosphatases (SHPs). It functions as a coreceptor in the process of NK cell activation. It can also mediate inhibitory signals in NK cells from X-linked lymphoproliferative patients. Alternative splicing results in multiple transcript variants encoding distinct isoforms.
Usage	Research use only



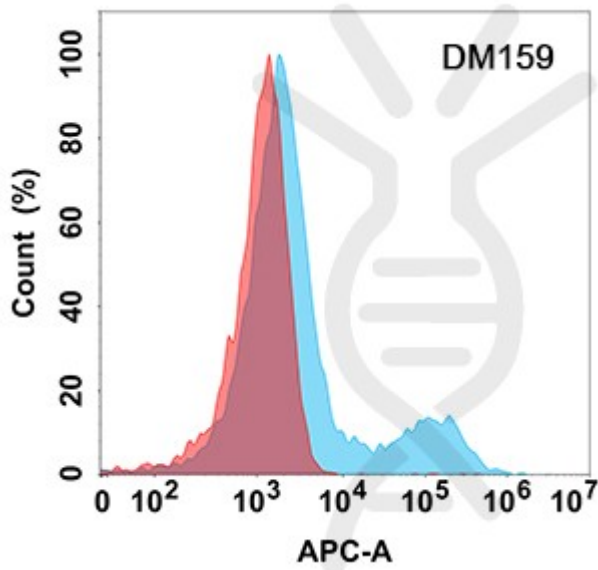


Figure 1. Flow cytometry analysis with Anti-NTB-A (DM159) on Expi293 cells transfected with human NTB-A (Blue histogram) or Expi293 transfected with irrelevant protein (Red histogram).

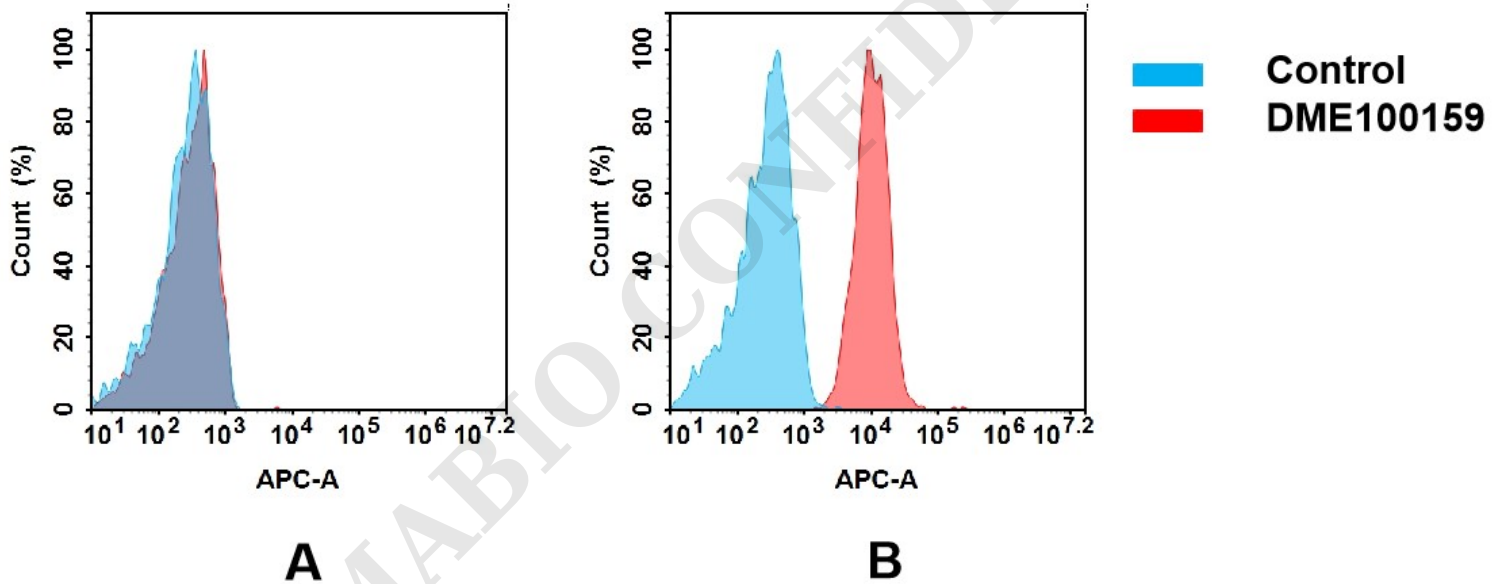


Figure 2. Flow cytometry analysis of antigen binding of rabbit anti-human NTB-A mAb(DME100159).

(A) DME100159 does not bind to 293T cells that do not express NTB-A.

(B) A clear peak shift of DME100159 was seen compared to the control when incubated with NTB-A-expressing Raji cells, indicating strong binding of DME100159 to NTB-A. Antibodies were incubated at 5 μ g/mL.



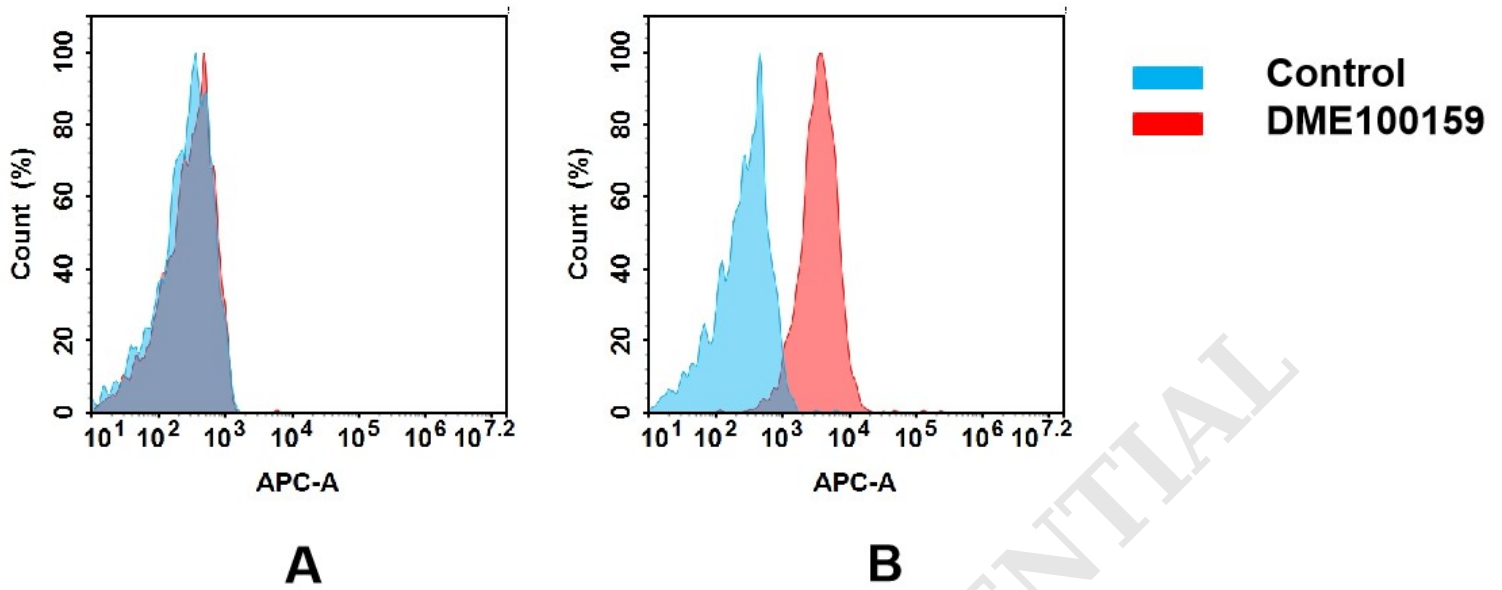


Figure 3. Flow cytometry analysis of antigen binding of rabbit anti-human NTB-A mAb(DME100159).

(A) DME100159 does not bind to 293T cells that do not express NTB-A.

(B) A clear peak shift of DME100159 was seen compared to the control when incubated with NTB-A-expressing Jurkat cells, indicating strong binding of DME100159 to NTB-A. Antibodies were incubated at 5 µg/mL.

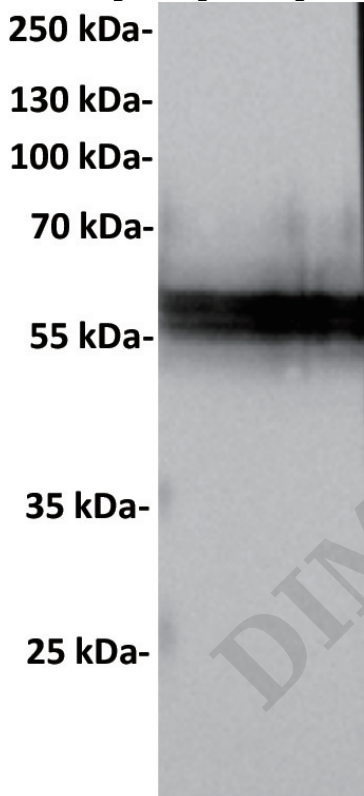


Figure 4. Anti-NTB-A antibody (SKU# DME100159) at 1/1000 dilution

Lane : RAJI(human Burkitt's lymphoma B lymphocyte), whole cell lysate

Secondary : Goat Anti-Rabbit IgG H&L (HRP) at 1/5000 dilution

Predicted band size: 37 kDa

Observed band size: 60 kDa



DME100159

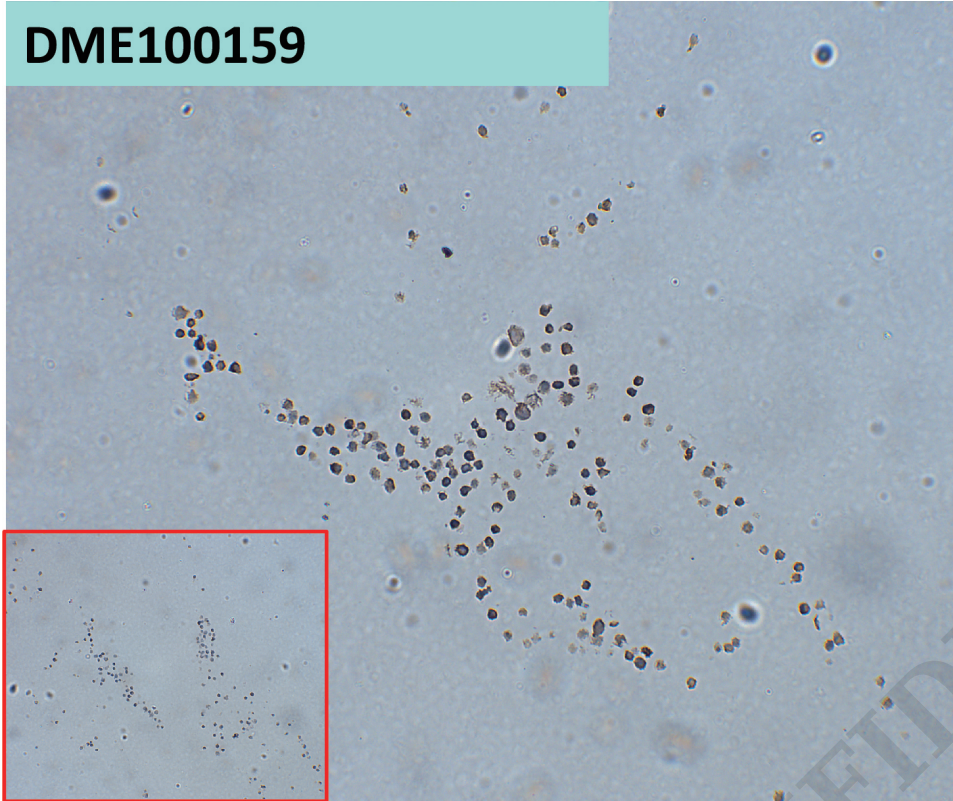


Figure 5. DME100159 at 10 μ g/ml staining NTB-A in Raji cells by IHC (SKU# DME100159)

DIMABIO CONFIDENTIAL

