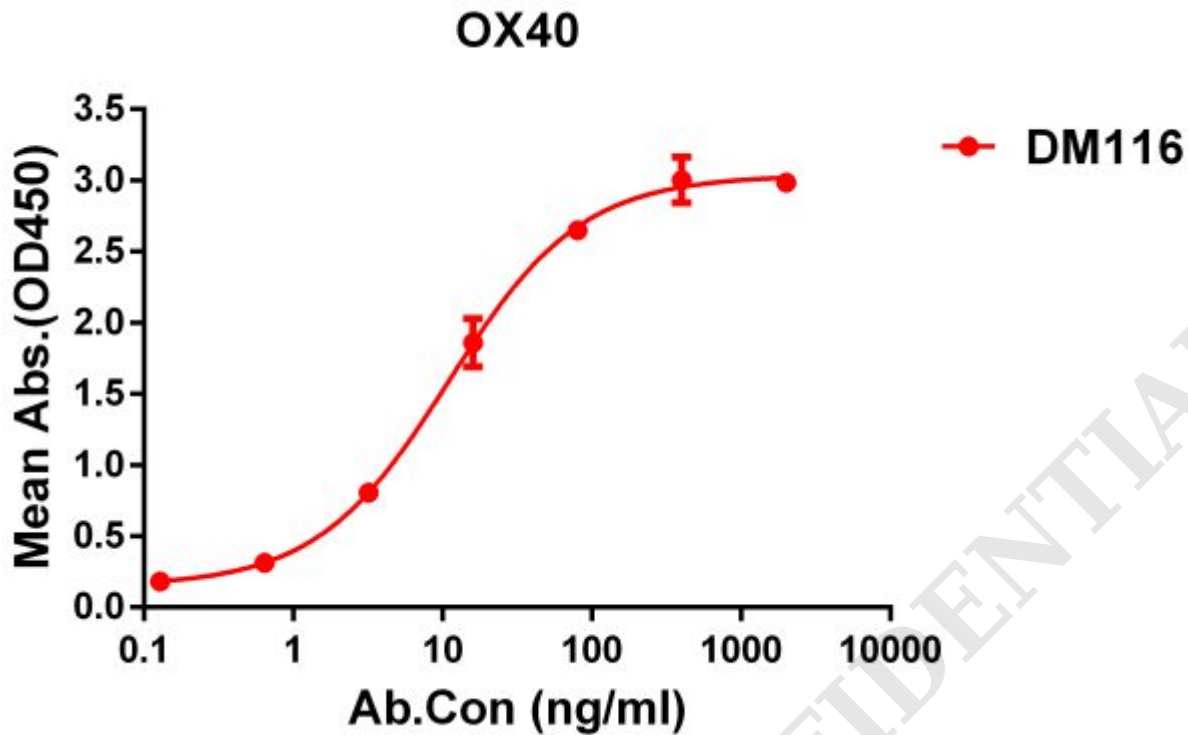


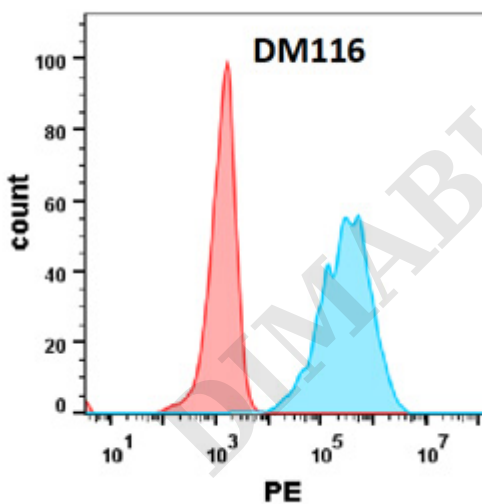
**PRODUCT INFORMATION**

<b>Clone ID</b>	DM116
<b>Target</b>	OX40
<b>Synonyms</b>	TNFRSF4; OX40; CD134; OX40L receptor; ACT35; TXGP1L
<b>Host Species</b>	Rabbit
<b>Description</b>	Anti-OX40 antibody(DM116); Rabbit mAb
<b>Delivery</b>	In Stock
<b>Uniprot ID</b>	P43489
<b>IgG type</b>	Rabbit IgG
<b>Clonality</b>	Monoclonal
<b>Reactivity</b>	Human
<b>Applications</b>	ELISA; Flow Cyt
<b>Recommended Dilutions</b>	ELISA 1:5000-10000; Flow Cyt 1:100
<b>Purification</b>	Purified from cell culture supernatant by affinity chromatography
<b>Formulation &amp; Reconstitution</b>	Lyophilized from sterile PBS, pH 7.4. Normally 5 % - 8% trehalose is added as protectants before lyophilization. Please see Certificate of Analysis for specific instructions of reconstitution.
<b>Storage &amp; Shipping</b>	Store at -20°C to -80°C for 12 months in lyophilized form. After reconstitution, if not intended for use within a month, aliquot and store at -80°C (Avoid repeated freezing and thawing). Lyophilized proteins are shipped at ambient temperature.
<b>Background</b>	The protein encoded by this gene is a member of the TNF-receptor superfamily. This receptor has been shown to activate NF-kappaB through its interaction with adaptor proteins TRAF2 and TRAF5. Knockout studies in mice suggested that this receptor promotes the expression of apoptosis inhibitors BCL2 and BCL2L1:BCL2-XL; and thus suppresses apoptosis. The knockout studies also suggested the roles of this receptor in CD4 T cell response; as well as in T cell-dependent B cell proliferation and differentiation.
<b>Usage</b>	Research use only
<b>Conjugate</b>	Unconjugated





**Figure 1.** ELISA plate pre-coated by 2  $\mu\text{g/ml}$  (100  $\mu\text{l/well}$ ) Human OX40 protein, hFc-His tagged protein ([getskuurl sku="PME100022"]) can bind Rabbit anti-OX40 monoclonal antibody (**clone: DM116**) in a linear range of 6-70 ng/ml.



**Figure 2.** Flow cytometry analysis with Anti-OX40 (**DM116**) on Expi293 cells transfected with human OX40 (Blue histogram) or Expi293 transfected with irrelevant protein(Red histogram).

