

PRODUCT INFORMATION

Common Name	MK-3475
Conjugate	Unconjugated
Synonyms	PDCD1;PD1;CD279;SLEB2
Applications	ELISA; Flow Cyt
Recommended Dilutions	ELISA 1:5000-10000; Flow Cyt 1:100
Formulation & Reconstitution	Lyophilized from sterile PBS, pH 7.4. Normally 5% - 8% trehalose is added as protectants before lyophilization. Please see Certificate of Analysis for specific instructions of reconstitution.
Host Species	Humanized
IgG type	IgG4
Reactivity	Human
Target	PD-1
Uniprot ID	Q15116
Description	Anti-PD-1 (pembrolizumab biosimilar) mAb
Delivery	In Stock
Storage & Shipping	Store at -20°C to -80°C for 12 months in lyophilized form. After reconstitution, if not intended for use within a month, aliquot and store at -80°C (Avoid repeated freezing and thawing). Lyophilized proteins are shipped at ambient temperature.
Background	Research grade biosimilar. Not for use in therapeutic or diagnostic procedures for humans or animals.
Usage	Research use only
DIMA Disclaimer	All DIMA recombinant antibodies are genuinely generated by DIMA Biotech. They are all under patent application. Any protein sequencing or reverse engineering attempt is prohibited. We are actively scrutinizing all patent application to ensure no IP infringement.



Anti-PD1 (pembrolizumab biosimilar) mAb ELISA

0.2 μg of Human PD1, mFc-His Tagged protein per well

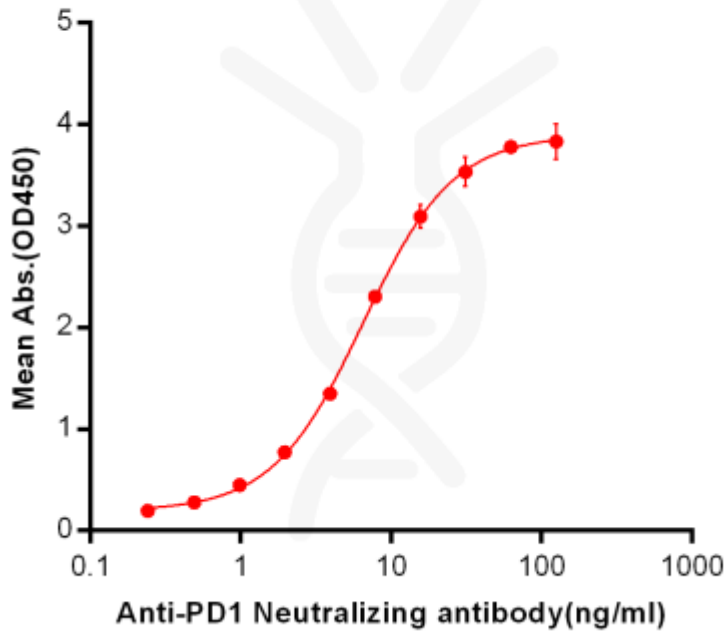


Figure 1. ELISA plate pre-coated by 2 $\mu\text{g}/\text{ml}$ (100 $\mu\text{l}/\text{well}$) Human PD1, mFc-His tagged protein ([getskuurl sku="PME100025"]) can bind Anti-PD-1 Neutralizing antibody in a linear range of 0.24-6.49 ng/ml.

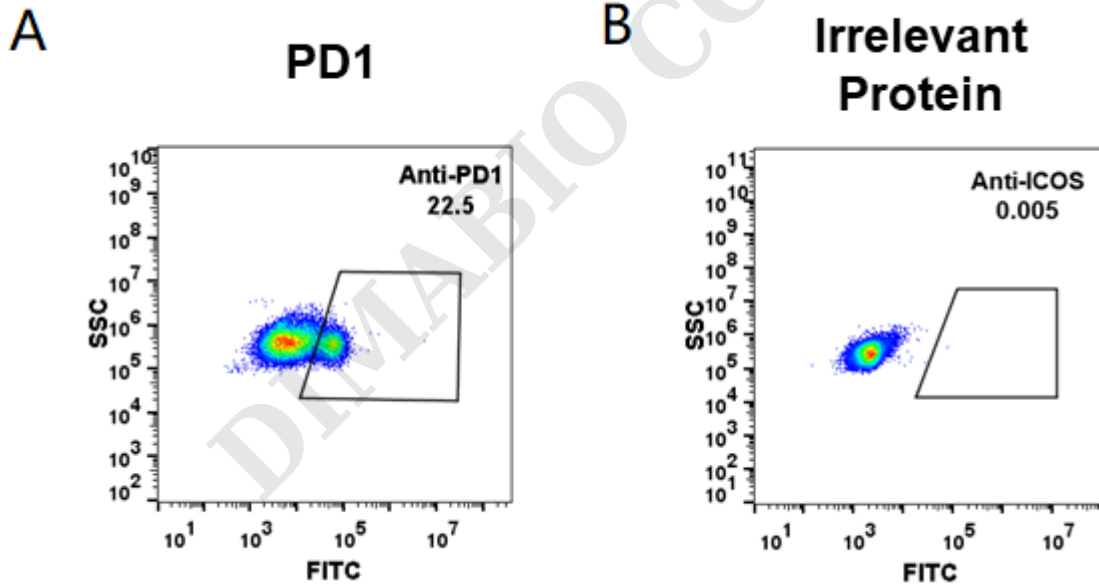


Figure 2. HEK293 cell line transfected with irrelevant protein (**B**) and human PD1 (**A**) were surface stained with anti-PD1 neutralizing antibody 1 $\mu\text{g}/\text{ml}$ (pembrolizumab) followed by Alexa 488-conjugated anti-human IgG secondary antibody.

