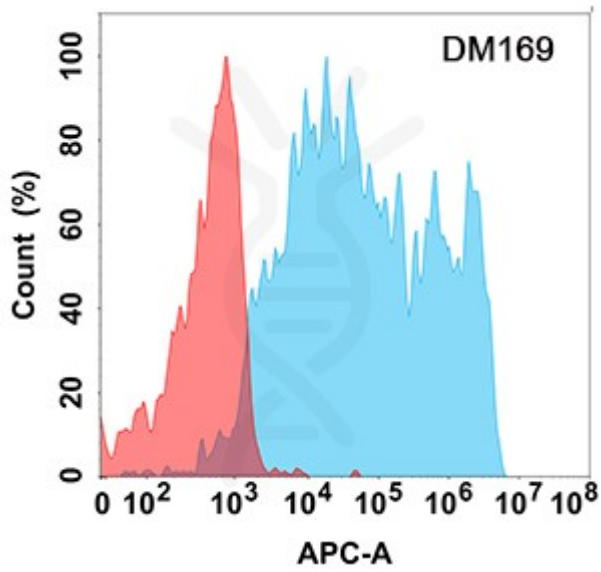


**PRODUCT INFORMATION**

<b>Clone ID</b>	DM169
<b>Target</b>	PDL2
<b>Synonyms</b>	B7DC; bA574F11.2; Btdc; CD273; PD-L2; PDCD1L2; PDL2
<b>Host Species</b>	Rabbit
<b>Description</b>	Anti-PDL2 antibody(DM169); Rabbit mAb
<b>Delivery</b>	In Stock
<b>Uniprot ID</b>	Q9BQ51
<b>IgG type</b>	Rabbit IgG
<b>Clonality</b>	Monoclonal
<b>Reactivity</b>	Human
<b>Applications</b>	ELISA; Flow Cyt
<b>Recommended Dilutions</b>	ELISA 1:5000-10000; Flow Cyt 1:100
<b>Purification</b>	Purified from cell culture supernatant by affinity chromatography
<b>Formulation &amp; Reconstitution</b>	Lyophilized from sterile PBS, pH 7.4. Normally 5% - 8% trehalose is added as protectants before lyophilization. Please see Certificate of Analysis for specific instructions of reconstitution.
<b>Storage &amp; Shipping</b>	Store at -20°C to -80°C for 12 months in lyophilized form. After reconstitution, if not intended for use within a month, aliquot and store at -80°C (Avoid repeated freezing and thawing). Lyophilized proteins are shipped at ambient temperature.
<b>Background</b>	Involved in the costimulatory signal; essential for T-cell proliferation and IFNG production in a PDCD1-independent manner. Interaction with PDCD1 inhibits T-cell proliferation by blocking cell cycle progression and cytokine production (By similarity).
<b>Usage</b>	Research use only
<b>Conjugate</b>	Unconjugated





**Figure 1.** Flow cytometry analysis with Anti-PDL2 (DM169) on Expi293 cells transfected with human PDL2 (Blue histogram) or Expi293 transfected with irrelevant protein (Red histogram).

DIMABIO CONFIDENTIAL

