

PRODUCT INFORMATION

Clone ID	DMC462
Target	PRLR
Synonyms	Prolactin receptor; PRL-R
Host Species	Rabbit
Description	Anti-PRLR antibody(DMC462); IgG1 Chimeric mAb
Delivery	In Stock
Uniprot ID	P16471
IgG type	Rabbit/Human Fc chimeric IgG1
Clonality	Monoclonal
Reactivity	Human
Applications	Flow Cyt
Recommended Dilutions	Flow Cyt 1:100
Purification	Purified from cell culture supernatant by affinity chromatography
Formulation & Reconstitution	Lyophilized from sterile PBS, pH 7.4. Normally 5 % - 8% trehalose is added as protectants before lyophilization. Please see Certificate of Analysis for specific instructions of reconstitution.
Storage & Shipping	Store at -20°C to -80°C for 12 months in lyophilized form. After reconstitution, if not intended for use within a month, aliquot and store at -80°C (Avoid repeated freezing and thawing). Lyophilized proteins are shipped at ambient temperature.
Background	This gene encodes a receptor for the anterior pituitary hormone; prolactin; and belongs to the type I cytokine receptor family. Prolactin-dependent signaling occurs as the result of ligand-induced dimerization of the prolactin receptor. Several alternatively spliced transcript variants encoding different membrane-bound and soluble isoforms have been described for this gene; which may function to modulate the endocrine and autocrine effects of prolactin in normal tissue and cancer. [provided by RefSeq; Feb 2011]
Usage	Research use only
Conjugate	Unconjugated



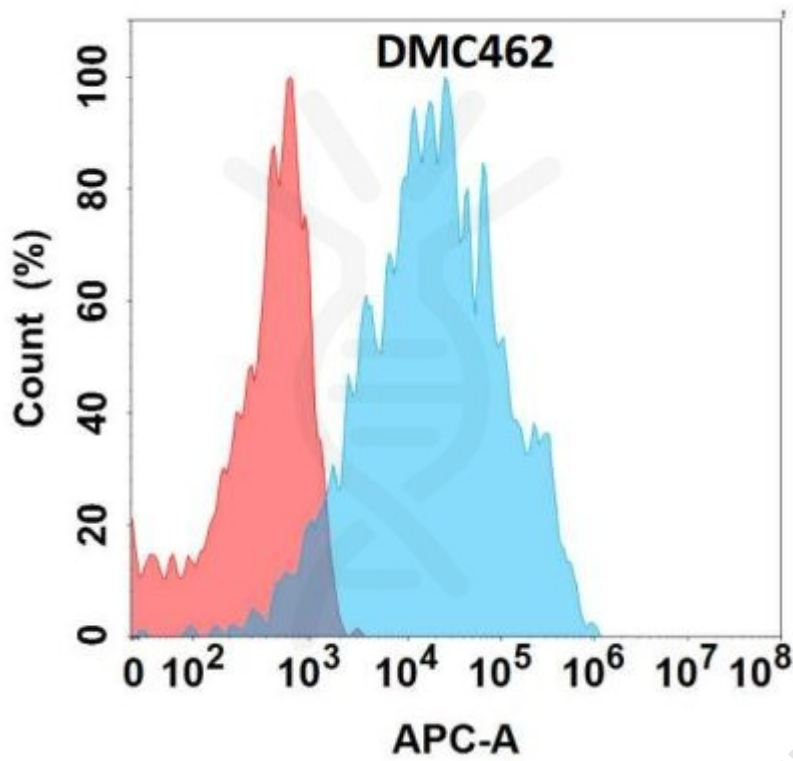


Figure 1. Flow cytometry analysis with Anti-PRLR (DMC462) on Expi293 cells transfected with human PRLR (Blue histogram) or Expi293 transfected with irrelevant protein (Red histogram).

DIMABIO CONFIDENTIAL

