

**PRODUCT INFORMATION**

<b>Common Name</b>	J-591, MLN-591, huj-591
<b>Synonyms</b>	FGCP;FOLH;GCP2;GCPII;mGCP;NAALAD1;NAALAdase;PSM
<b>Applications</b>	ELISA; Flow Cyt
<b>Recommended Dilutions</b>	ELISA 1:5000-10000; Flow Cyt 1:100
<b>Formulation &amp; Reconstitution</b>	Lyophilized from sterile PBS, pH 7.4. Normally 5 % - 8% trehalose is added as protectants before lyophilization. Please see Certificate of Analysis for specific instructions of reconstitution.
<b>Host Species</b>	Chimeric
<b>IgG type</b>	IgG1
<b>Reactivity</b>	Human
<b>Target</b>	PSMA
<b>Uniprot ID</b>	Q04609
<b>Description</b>	Anti-PSMA(rosopatamab biosimilar) mAb
<b>Delivery</b>	In Stock
<b>Storage &amp; Shipping</b>	Store at -20°C to -80°C for 12 months in lyophilized form. After reconstitution, if not intended for use within a month, aliquot and store at -80°C (Avoid repeated freezing and thawing). Lyophilized proteins are shipped at ambient temperature.
<b>Background</b>	Research grade biosimilar. Not for use in therapeutic or diagnostic procedures for humans or animals.
<b>Usage</b>	Research use only

DIMABIO CONFIDENTIAL



## Anti-PSMA (rosopatamab biosimilar) mAb ELISA

0.2  $\mu\text{g}$  of Human PSMA, His tagged protein per well

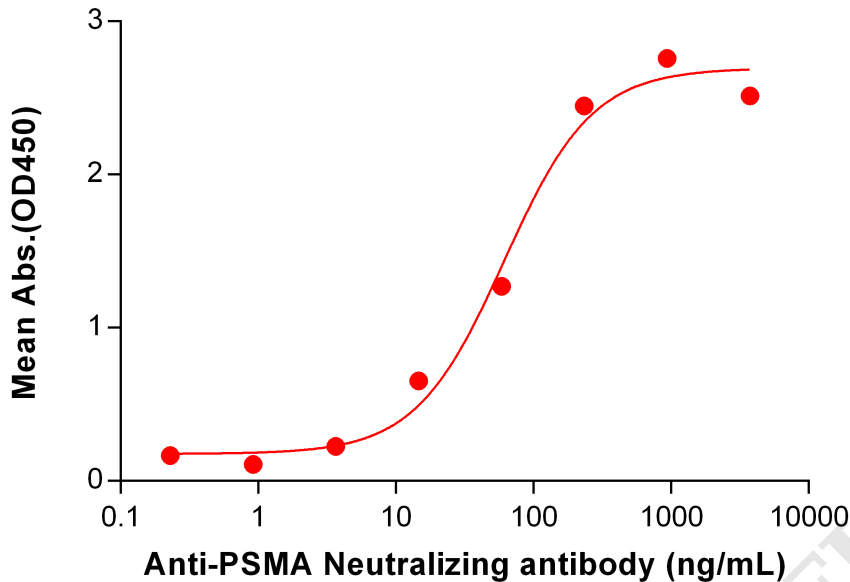


Figure 1. ELISA plate pre-coated by 2  $\mu\text{g}/\text{mL}$  (100  $\mu\text{L}/\text{well}$ ) Human PSMA Protein, His Tag PME100545 can bind Anti-PSMA Neutralizing antibody (BME100128) in a linear range of 3.66-234.38 ng/mL.

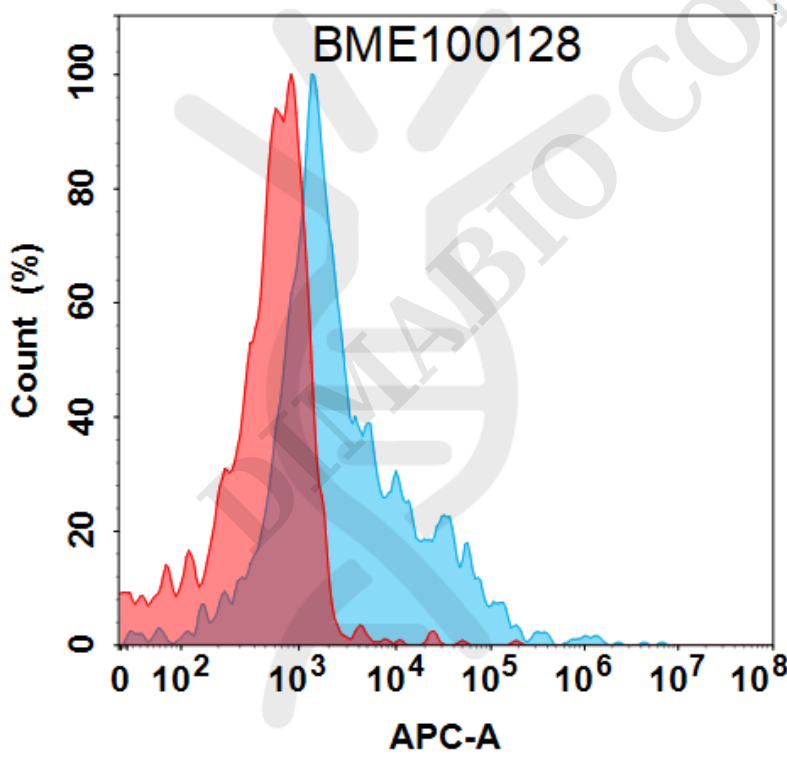


Figure 2. Flow cytometry analysis with 15  $\mu\text{g}/\text{mL}$  Anti-PSMA (rosopatamab biosimilar) mAb (BME100128) on Expi293 cells transfected with Human PSMA protein (Blue histogram) or Expi293 transfected with irrelevant protein (Red histogram).



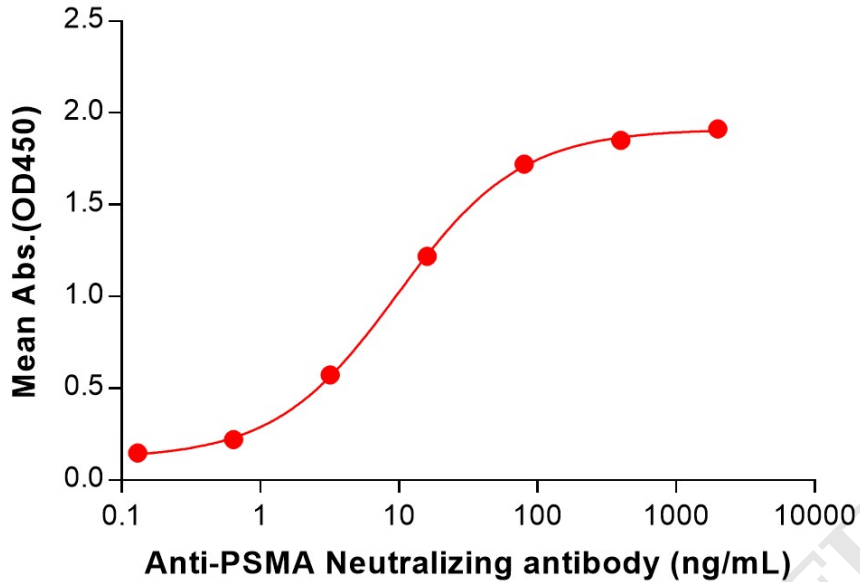
**Anti-PSMA(rosopatamab biosimilar) mAb ELISA**0.2  $\mu\text{g}$  of Human PSMA, hFc tagged protein per well

Figure 3. ELISA plate pre-coated by 2  $\mu\text{g}/\text{mL}$  (100  $\mu\text{L}/\text{well}$ ) Human PSMA Protein, hFc Tag (PME100390) can bind Anti-PSMA(rosopatamab biosimilar) mAb (BME100128) in a linear range of 3.20-80 ng/mL. In order to specifically detect BME100128, mouse anti-human Fab-specific antibody was used as detection antibody.

