

PRODUCT INFORMATION

Clone ID	DMC286
Target	SLAMF5
Synonyms	CD84;SLAMF5;LY9B;SLAMF5
Host Species	Rabbit
Description	Anti-SLAMF5 antibody(DMC286); IgG1 Chimeric mAb
Delivery	In Stock
Uniprot ID	Q9UIB8
IgG type	Rabbit/Human Fc chimeric IgG1
Clonality	Monoclonal
Reactivity	Human
Applications	Flow Cyt
Recommended Dilutions	Flow Cyt 1:100
Purification	Purified from cell culture supernatant by affinity chromatography
Formulation & Reconstitution	Lyophilized from sterile PBS, pH 7.4. Normally 5 % - 8% trehalose is added as protectants before lyophilization. Please see Certificate of Analysis for specific instructions of reconstitution.
Storage & Shipping	Store at -20°C to -80°C for 12 months in lyophilized form. After reconstitution, if not intended for use within a month, aliquot and store at -80°C (Avoid repeated freezing and thawing). Lyophilized proteins are shipped at ambient temperature.
Background	This gene encodes a membrane glycoprotein that is a member of the signaling lymphocyte activation molecule (SLAM) family. This family forms a subset of the larger CD2 cell-surface receptor Ig superfamily. The encoded protein is a homophilic adhesion molecule that is expressed in numerous immune cells types and is involved in regulating receptor-mediated signaling in those cells. Alternate splicing results in multiple transcript variants.
Usage	Research use only
Conjugate	Unconjugated
DIMA Disclaimer	All DIMA recombinant antibodies are genuinely generated by DIMA Biotech. They are all under patent application. Any protein sequencing or reverse engineering attempt is prohibited. We are actively scrutinizing all patent application to ensure no IP infringement.



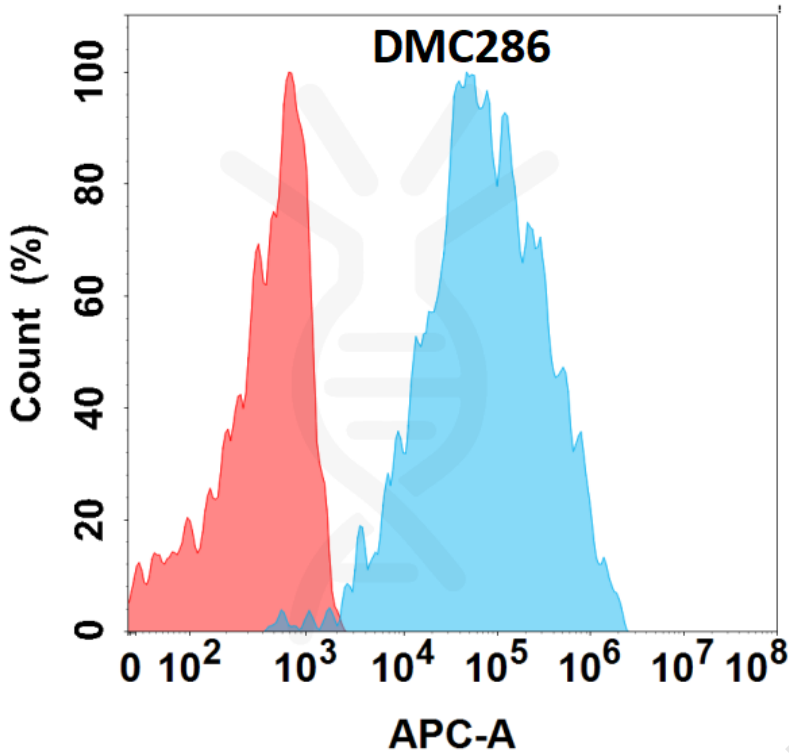


Figure 1. Flow cytometry analysis with Anti-SLAMF5 (DMC286) on Expi293 cells transfected with human SLAMF5 (Blue histogram) or Expi293 transfected with irrelevant protein (Red histogram).

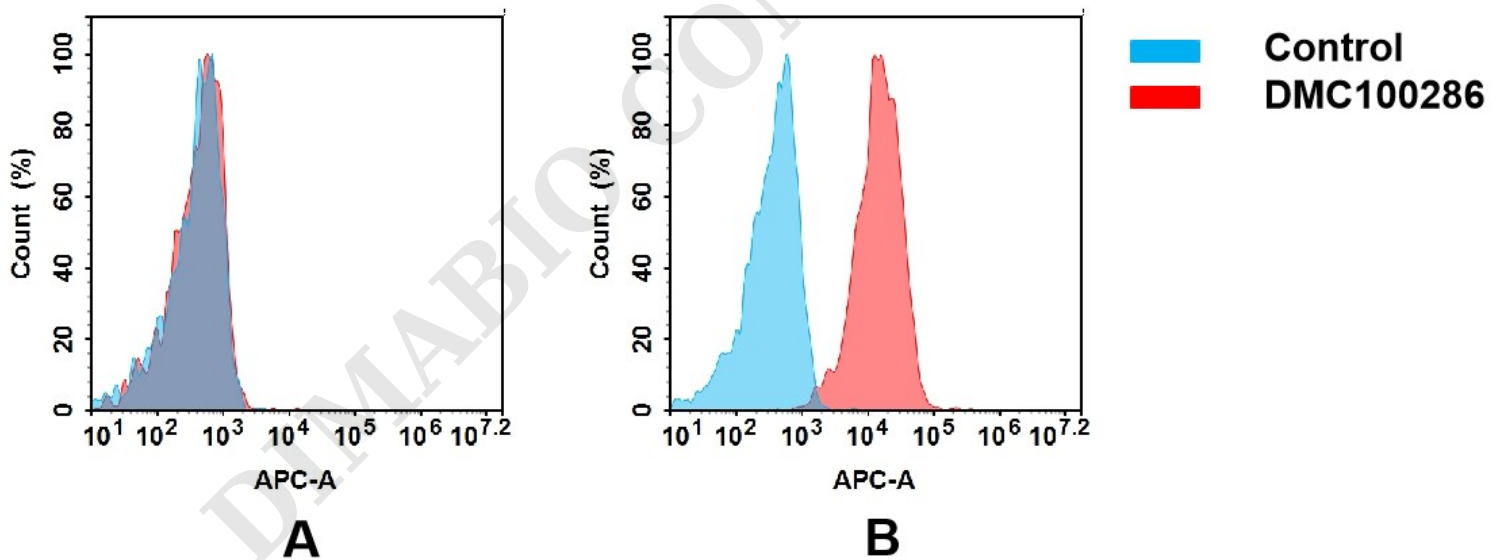


Figure 2. Flow cytometry analysis of antigen binding of anti-human SLAMF5 mAb(DMC100286).

(A) DMC100286 does not bind to CHO-S cells that do not express SLAMF5.

(B) A clear peak shift of DMC100286 was seen compared to the control when incubated with SLAMF5-expressing Raji cells, indicating strong binding of DMC100286 to SLAMF5. Antibodies were incubated at 5 μ g/mL.

