

PRODUCT INFORMATION

Clone ID	1G3
Target	TIM-1
Synonyms	HAVCR;HAVCR-1;KIM-1;KIM1;TIM;TIM-1;TIM1;TIMD-1;TIMD1
Host Species	Rabbit
Description	Anti-TIM-1 antibody(1G3), IgG1 Chimeric mAb
Delivery	In Stock
Uniprot ID	Q96D42
IgG type	Rabbit/Human Fc chimeric IgG1
Clonality	Monoclonal
Reactivity	Human
Applications	Flow Cyt
Recommended Dilutions	Flow Cyt 1/100
Purification	Purified from cell culture supernatant by affinity chromatography
Formulation & Reconstitution	Lyophilized from sterile PBS, pH 7.4. Normally 5 % - 8% trehalose is added as protectants before lyophilization. Please see Certificate of Analysis for specific instructions of reconstitution.
Storage & Shipping	Store at -20°C to -80°C for 12 months in lyophilized form. After reconstitution, if not intended for use within a month, aliquot and store at -80°C (Avoid repeated freezing and thawing). Lyophilized proteins are shipped at ambient temperature.
Background	The protein encoded by this gene is a membrane receptor for both human hepatitis A virus (HHAV) and TIMD4. The encoded protein may be involved in the moderation of asthma and allergic diseases. The reference genome represents an allele that retains a MTTVP amino acid segment that confers protection against atopy in HHAV seropositive individuals. Alternative splicing of this gene results in multiple transcript variants. Related pseudogenes have been identified on chromosomes 4, 12 and 19. [provided by RefSeq, Apr 2015]
Usage	Research use only
Conjugate	Unconjugated
DIMA Disclaimer	All DIMA recombinant antibodies are genuinely generated by DIMA Biotech. They are all under patent application. Any protein sequencing or reverse engineering attempt is prohibited. We are actively scrutinizing all patent application to ensure no IP infringement.



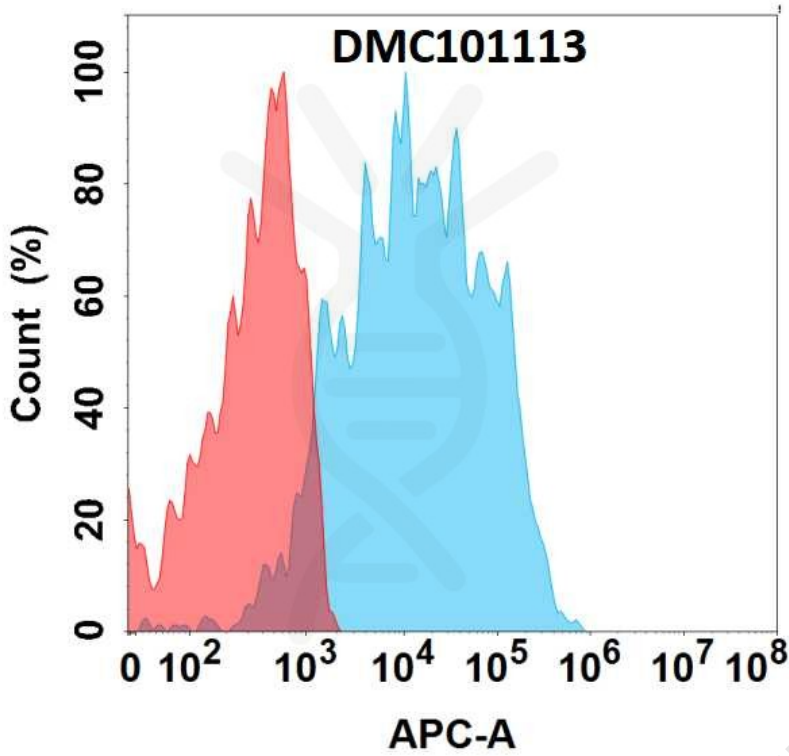


Figure 1. Flow cytometry analysis with 1 μ g/mL Anti-TIM-1 (1G3) mAb on Expi293 cells transfected with human TIM-1 (Blue histogram) or Expi293 transfected with irrelevant protein (Red histogram).

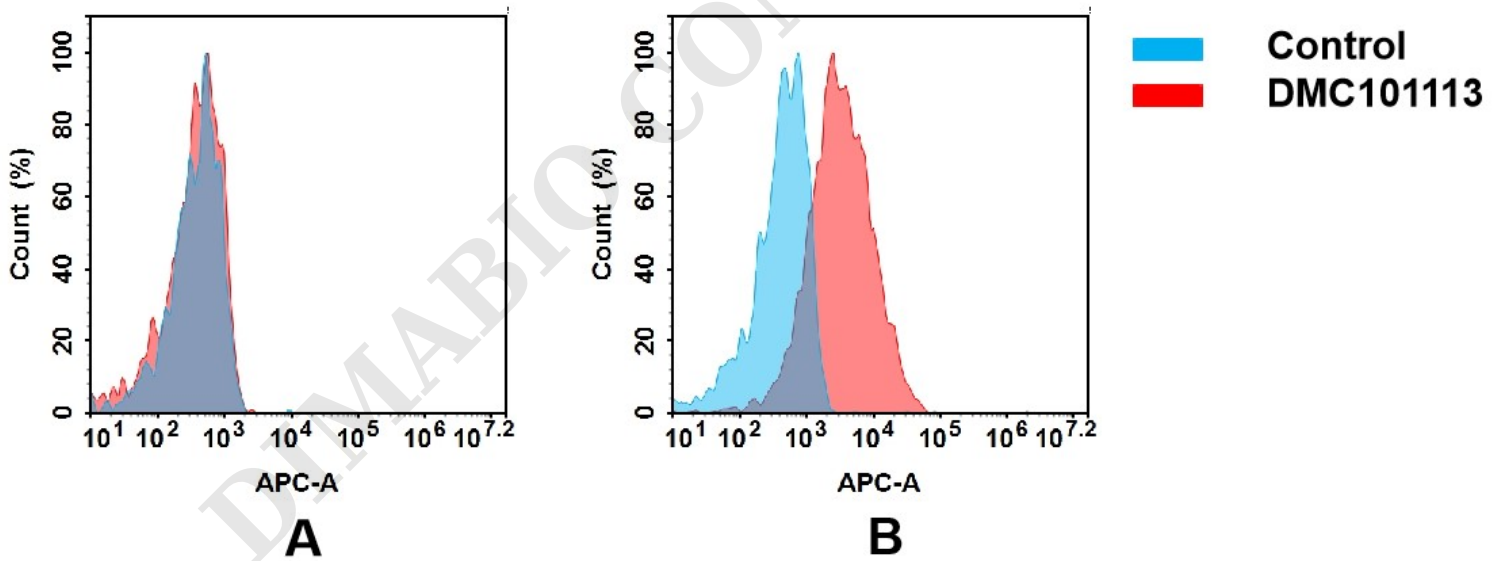


Figure 2. Flow cytometry analysis of antigen binding of anti-human TIM-1 mAb(DMC101113).

(A) DMC101113 does not bind to CHO-S cells that do not express TIM-1.

(B) A clear peak shift of DMC101113 was seen compared to the control when incubated with TIM-1-expressing Huh7 cells, indicating strong binding of DMC101113 to TIM-1. Antibodies were incubated at 5 μ g/mL.

