

**PRODUCT INFORMATION**

<b>Clone ID</b>	DM83
<b>Target</b>	TIM3
<b>Synonyms</b>	HAVCR2; TIM3; TIMD3; FLJ14428; KIM3
<b>Host Species</b>	Rabbit
<b>Description</b>	Anti-TIM3 antibody(DM83); Rabbit mAb
<b>Delivery</b>	In Stock
<b>Uniprot ID</b>	Q8TDQ0
<b>IgG type</b>	Rabbit IgG
<b>Clonality</b>	Monoclonal
<b>Reactivity</b>	Human
<b>Applications</b>	ELISA; Flow Cyt
<b>Recommended Dilutions</b>	ELISA 1:5000-10000; Flow Cyt 1:100
<b>Purification</b>	Purified from cell culture supernatant by affinity chromatography
<b>Formulation &amp; Reconstitution</b>	Lyophilized from sterile PBS, pH 7.4. Normally 5 % - 8% trehalose is added as protectants before lyophilization. Please see Certificate of Analysis for specific instructions of reconstitution.
<b>Storage &amp; Shipping</b>	Store at -20°C to -80°C for 12 months in lyophilized form. After reconstitution, if not intended for use within a month, aliquot and store at -80°C (Avoid repeated freezing and thawing). Lyophilized proteins are shipped at ambient temperature.
<b>Background</b>	The protein encoded by this gene belongs to the immunoglobulin superfamily; and TIM family of proteins. CD4-positive T helper lymphocytes can be divided into types 1 (Th1) and 2 (Th2) on the basis of their cytokine secretion patterns. Th1 cells are involved in cell-mediated immunity to intracellular pathogens and delayed-type hypersensitivity reactions; whereas; Th2 cells are involved in the control of extracellular helminthic infections and the promotion of atopic and allergic diseases. This protein is a Th1-specific cell surface protein that regulates macrophage activation; and inhibits Th1-mediated auto- and alloimmune responses; and promotes immunological tolerance.
<b>Usage</b>	Research use only
<b>Conjugate</b>	Unconjugated



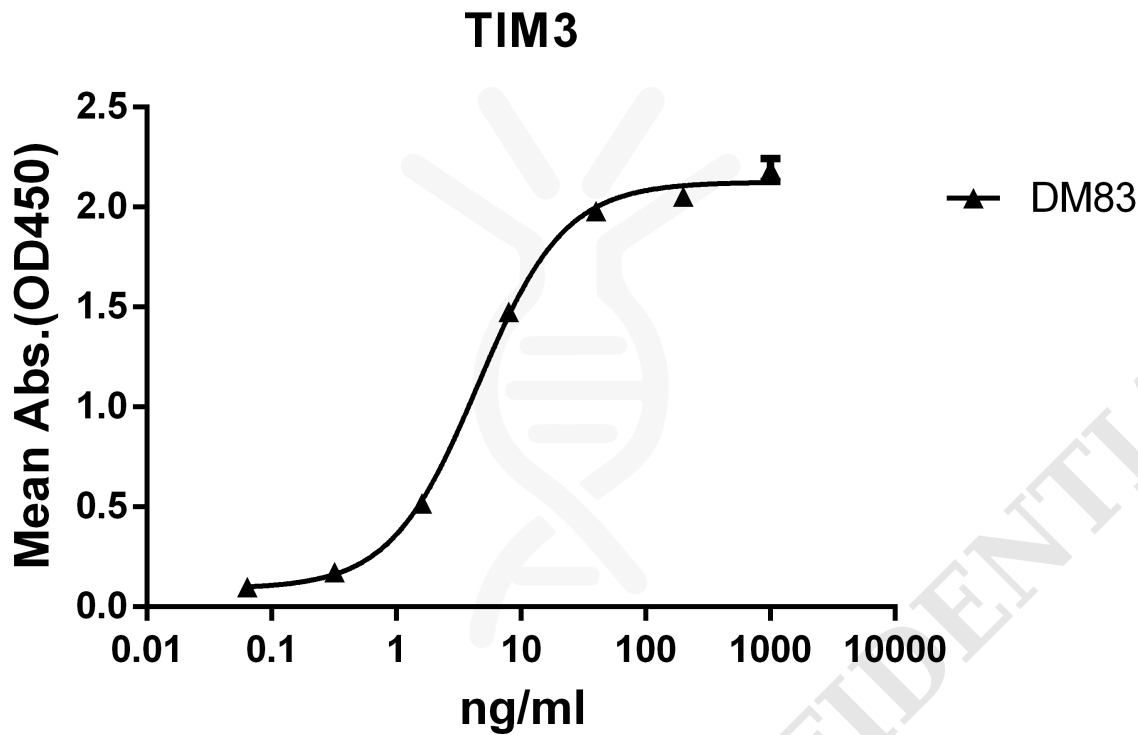


Figure 1. ELISA plate pre-coated by 2  $\mu\text{g/ml}$  (100  $\mu\text{l/well}$ ) Human TIM3 protein, mFc-His tagged protein PME100030 can bind Rabbit anti-TIM3 monoclonal antibody ( clone: DM83) in a linear range of 0.32-40 ng/ml.

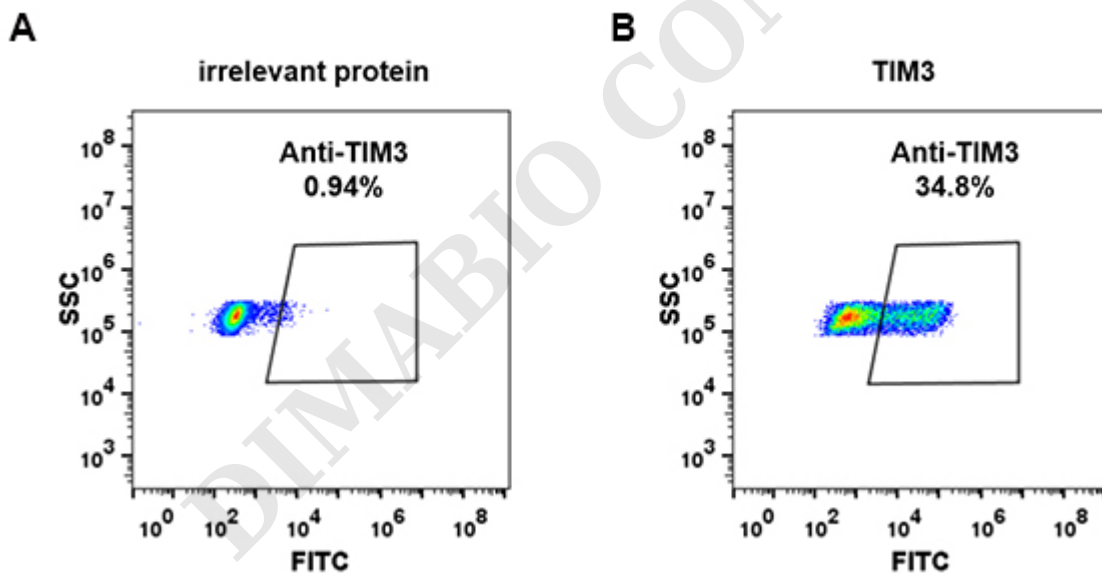


Figure 2. Expi 293 cell line transfected with irrelevant protein (A) and human TIM3 (B) were surface stained with Rabbit anti-TIM3 monoclonal antibody 1 $\mu\text{g/ml}$  ( clone: DM83) followed by Alexa 488-conjugated anti-rabbit IgG secondary antibody.



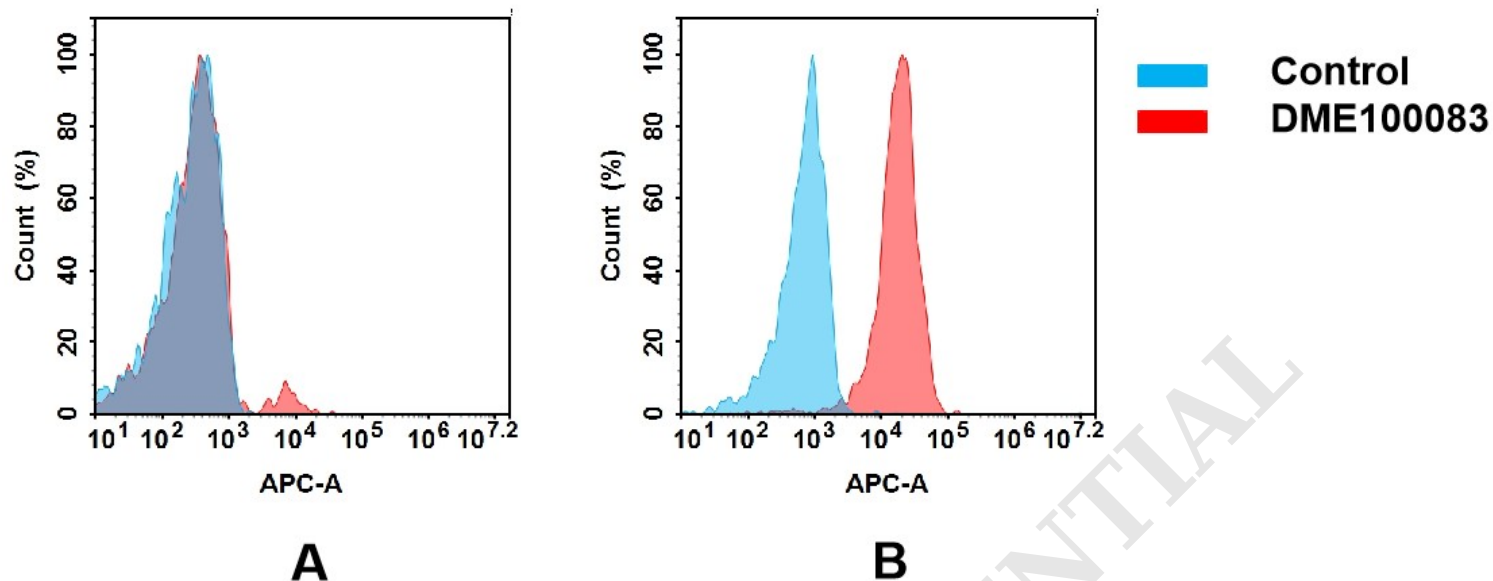


Figure 3. Flow cytometry analysis of antigen binding of rabbit anti-human TIM3 mAb(DME100083).

(A) DME100083 does not bind to 293T cells that do not express TIM3.

(B) A clear peak shift of DME100083 was seen compared to the control when incubated with TIM3-expressing 8226 cells, indicating strong binding of DME100083 to TIM3. Antibodies were incubated at 10 µg/mL.

DIMABIO CONFIDENTIAL

