

**PRODUCT INFORMATION**

<b>Common Name</b>	CNTO 148
<b>Synonyms</b>	DIF,TNF-alpha,TNFA,TNFSF2,cachexin,cachectin,TNF $\alpha$
<b>Applications</b>	ELISA, Flow Cyt
<b>Recommended Dilutions</b>	ELISA 1:5000-10000, Flow Cyt 1:100
<b>Formulation &amp; Reconstitution</b>	Lyophilized from sterile PBS, pH 7.4. Normally 5 % - 8% trehalose is added as protectants before lyophilization. Please see Certificate of Analysis for specific instructions.
<b>Host Species</b>	Homo sapiens
<b>IgG type</b>	IgG1
<b>Reactivity</b>	Human
<b>Target</b>	TNF $\alpha$
<b>Uniprot ID</b>	P01375
<b>Description</b>	Anti-TNF $\alpha$ (golimumab biosimilar) mAb
<b>Delivery</b>	In Stock
<b>Storage &amp; Shipping</b>	Store at -20°C to -80°C for 12 months in lyophilized form. After reconstitution, if not intended for use within a month, aliquot and store at -80°C (Avoid repeated freezing and thawing).Lyophilized antibodies are shipped at ambient temperature.
<b>Background</b>	Research grade biosimilar. Not for use in therapeutic or diagnostic procedures for humans or animals.
<b>Usage</b>	Research use only

CONFIDENTIAL



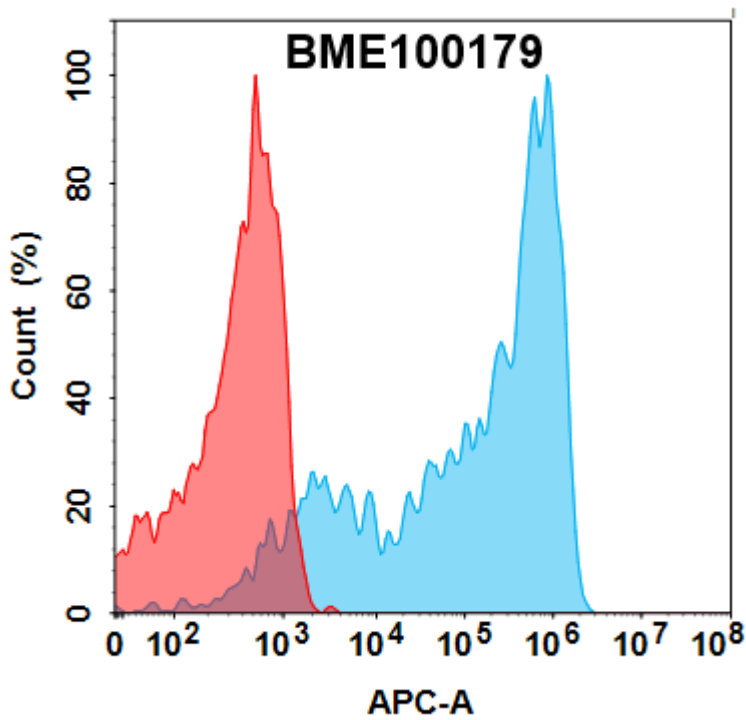


Figure 1. Flow cytometry analysis with 1 $\mu$ g/mL Anti-TNF $\alpha$ (golimumab biosimilar) mAb (BME100179) on Expi293 cells transfected with Human TNF $\alpha$  protein (Blue histogram) or Expi293 transfected with irrelevant protein (Red histogram).

### Anti-TNF $\alpha$ (golimumab biosimilar) mAb ELISA

0.2  $\mu$ g of Human TNF $\alpha$ , His tagged protein per well

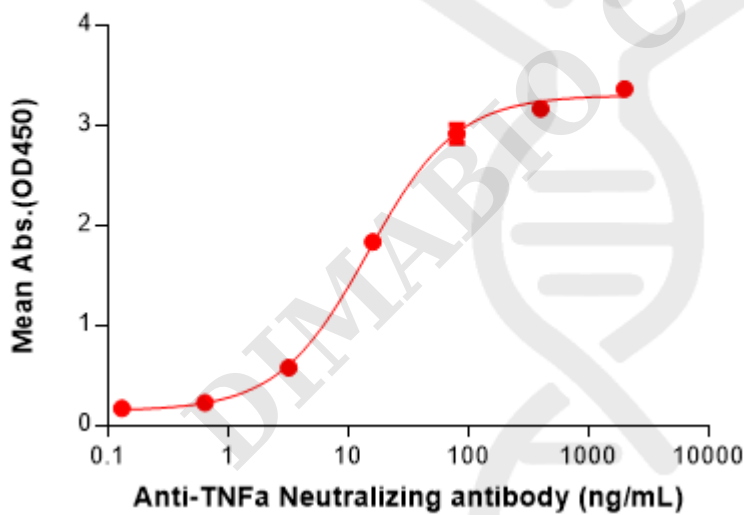


Figure 2. ELISA plate pre-coated by 2  $\mu$ g/mL (100  $\mu$ L/well) Human TNF $\alpha$  Protein, His Tag(PME100076) can bind Anti-TNF $\alpha$ (golimumab biosimilar) mAb(BME100179) in a linear range of 3.20–80 ng/mL.

