

PRODUCT INFORMATION

Clone ID	DMC223
Target	TREM2
Synonyms	PLOSL2; TREM-2; Trem2a; Trem2b; Trem2c
Host Species	Rabbit
Description	Anti-TREM2 antibody(DMC223); IgG1 Chimeric mAb
Delivery	In Stock
Uniprot ID	Q9NZC2
IgG type	Rabbit/Human Fc chimeric IgG1
Clonality	Monoclonal
Reactivity	Human
Applications	ELISA; Flow Cyt
Recommended Dilutions	ELISA 1:5000-10000; Flow Cyt 1:100
Purification	Purified from cell culture supernatant by affinity chromatography
Formulation & Reconstitution	Lyophilized from sterile PBS, pH 7.4. Normally 5 % - 8% trehalose is added as protectants before lyophilization. Please see Certificate of Analysis for specific instructions of reconstitution.
Storage & Shipping	Store at -20°C to -80°C for 12 months in lyophilized form. After reconstitution, if not intended for use within a month, aliquot and store at -80°C (Avoid repeated freezing and thawing). Lyophilized proteins are shipped at ambient temperature.
Background	This gene encodes a membrane protein that forms a receptor signaling complex with the TYRO protein tyrosine kinase binding protein. The encoded protein functions in immune response and may be involved in chronic inflammation by triggering the production of constitutive inflammatory cytokines. Defects in this gene are a cause of polycystic lipomembranous osteodysplasia with sclerosing leukoencephalopathy (PLOSL). Alternative splicing results in multiple transcript variants encoding different isoforms.
Usage	Research use only
Conjugate	Unconjugated
DIMA Disclaimer	All DIMA recombinant antibodies are genuinely generated by DIMA Biotech. They are all under patent application. Any protein sequencing or reverse engineering attempt is prohibited. We are actively scrutinizing all patent application to ensure no IP infringement.



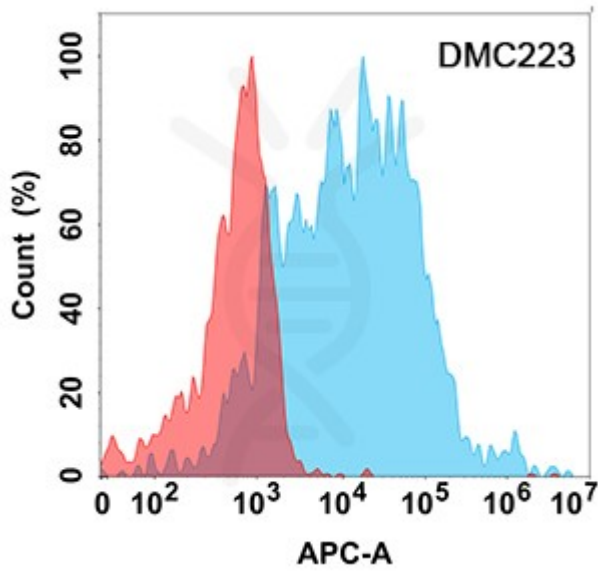


Figure 1. Flow cytometry analysis with Anti-TREM2 (DMC223) on Expi293 cells transfected with human TREM2 (Blue histogram) or Expi293 transfected with irrelevant protein (Red histogram).

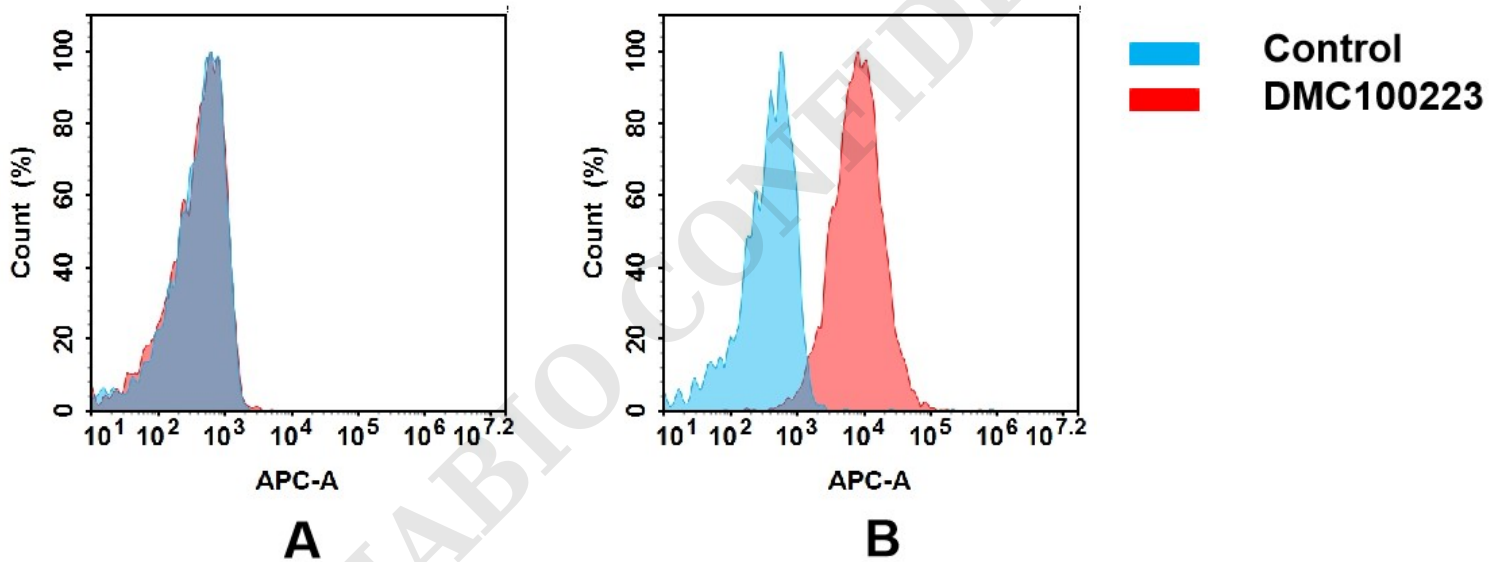


Figure 2. Flow cytometry analysis of antigen binding of anti-human TREM2 mAb(DMC100223).

(A) DMC100223 does not bind to CHO-S cells that do not express TREM2.

(B) A clear peak shift of DMC100223 was seen compared to the control when incubated with TREM2-expressing THP-1 cells, indicating strong binding of DMC100223 to TREM2. Antibodies were incubated at 5 µg/mL.

