

PRODUCT INFORMATION

Clone ID	DM75
Target	Trop2
Synonyms	TACSTD2; GA733-1; M1S1; TROP2
Host Species	Rabbit
Description	Anti-Trop2 antibody(DM75); Rabbit mAb
Delivery	In Stock
Uniprot ID	P09758
IgG type	Rabbit IgG
Clonality	Monoclonal
Reactivity	Human
Applications	ELISA; Flow Cyt
Recommended Dilutions	ELISA 1:5000-10000; Flow Cyt 1:100
Purification	Purified from cell culture supernatant by affinity chromatography
Formulation & Reconstitution	Lyophilized from sterile PBS, pH 7.4. Normally 5% - 8% trehalose is added as protectants before lyophilization. Please see Certificate of Analysis for specific instructions of reconstitution. Store at -20°C to -80°C for 12 months in lyophilized form. After reconstitution, if not intended for use within a month, aliquot and store at -80°C (Avoid repeated freezing and thawing). Lyophilized proteins are shipped at ambient temperature.
Storage & Shipping	
Background	This intronless gene encodes a carcinoma-associated antigen. This antigen is a cell surface receptor that transduces calcium signals. Mutations of this gene have been associated with gelatinous drop-like corneal dystrophy.
Usage	Research use only
Conjugate	Unconjugated
DIMA Disclaimer	All DIMA recombinant antibodies are genuinely generated by DIMA Biotech. They are all under patent application. Any protein sequencing or reverse engineering attempt is prohibited. We are actively scrutinizing all patent application to ensure no IP infringement.



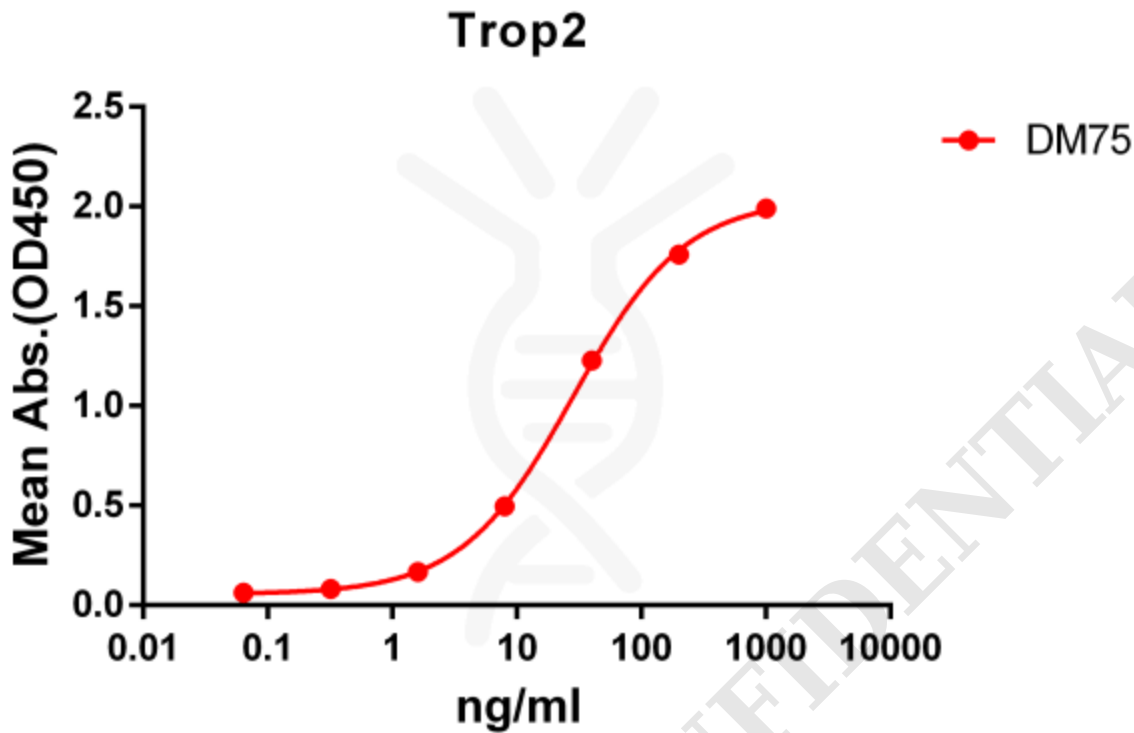


Figure 1. ELISA plate pre-coated by 2 $\mu\text{g/ml}$ (100 $\mu\text{l/well}$) Human Trop2 protein, mFc-His tagged protein ([getskuurl sku="PME100501"]) can bind Rabbit anti-Trop2 monoclonal antibody (**clone: DM75**) in a linear range of 1-100 ng/ml.

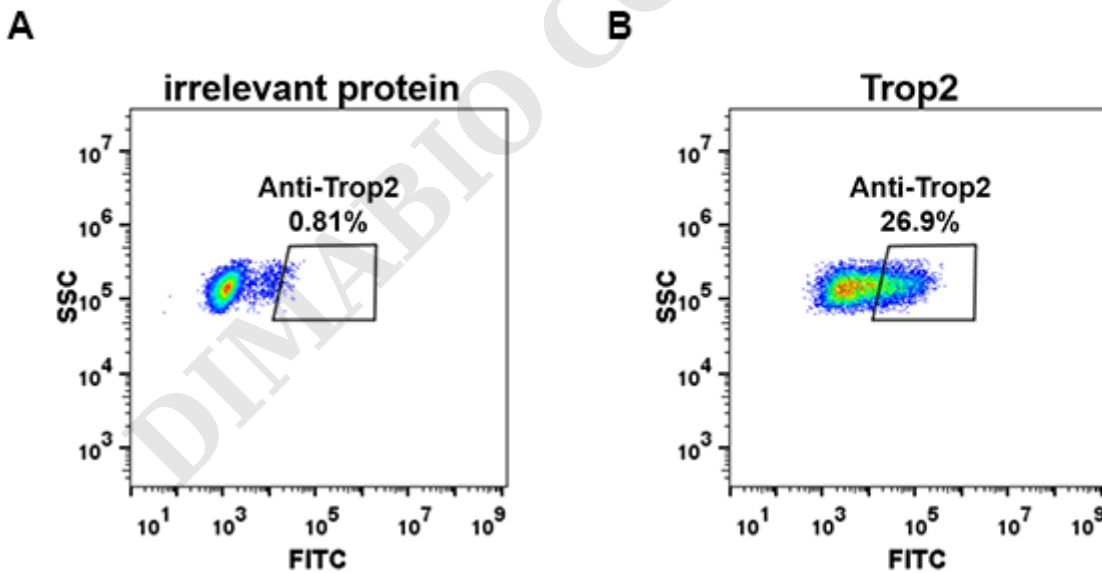


Figure 2. Expi 293 cell line transfected with irrelevant protein (**A**) and human Trop2 (**B**) were surface stained with Rabbit anti-Trop2 monoclonal antibody 1 $\mu\text{g/ml}$ (**clone: DM75**) followed by Alexa 488-conjugated anti-rabbit IgG secondary antibody.

