

PRODUCT INFORMATION

Clone ID	2B3
Target	UCHL1
Synonyms	HEL-117; HEL-S-53; NDGOA; PARK5; PGP 9.5; PGP9.5; PGP95; SPG79; Uch-L1
Host Species	Rabbit
Description	Anti-UCHL1 antibody(2B3), Rabbit mAb
Delivery	In Stock
Uniprot ID	P09936
IgG type	Rabbit IgG
Clonality	Monoclonal
Reactivity	Human
Applications	ELISA
Recommended Dilutions	ELISA 1:5000-10000
Purification	Purified from cell culture supernatant by affinity chromatography
Formulation & Reconstitution	Lyophilized from sterile PBS, pH 7.4. Normally 5 % - 8% trehalose is added as protectants before lyophilization. Please see Certificate of Analysis for specific instructions of reconstitution.
Storage & Shipping	Store at -20°C to -80°C for 12 months in lyophilized form. After reconstitution, if not intended for use within a month, aliquot and store at -80°C (Avoid repeated freezing and thawing). Lyophilized proteins are shipped at ambient temperature.
Background	The protein encoded by this gene belongs to the peptidase C12 family. This enzyme is a thiol protease that hydrolyzes a peptide bond at the C-terminal glycine of ubiquitin. This gene is specifically expressed in the neurons and in cells of the diffuse neuroendocrine system. Mutations in this gene may be associated with Parkinson disease.[provided by RefSeq, Sep 2009]
Usage	Research use only



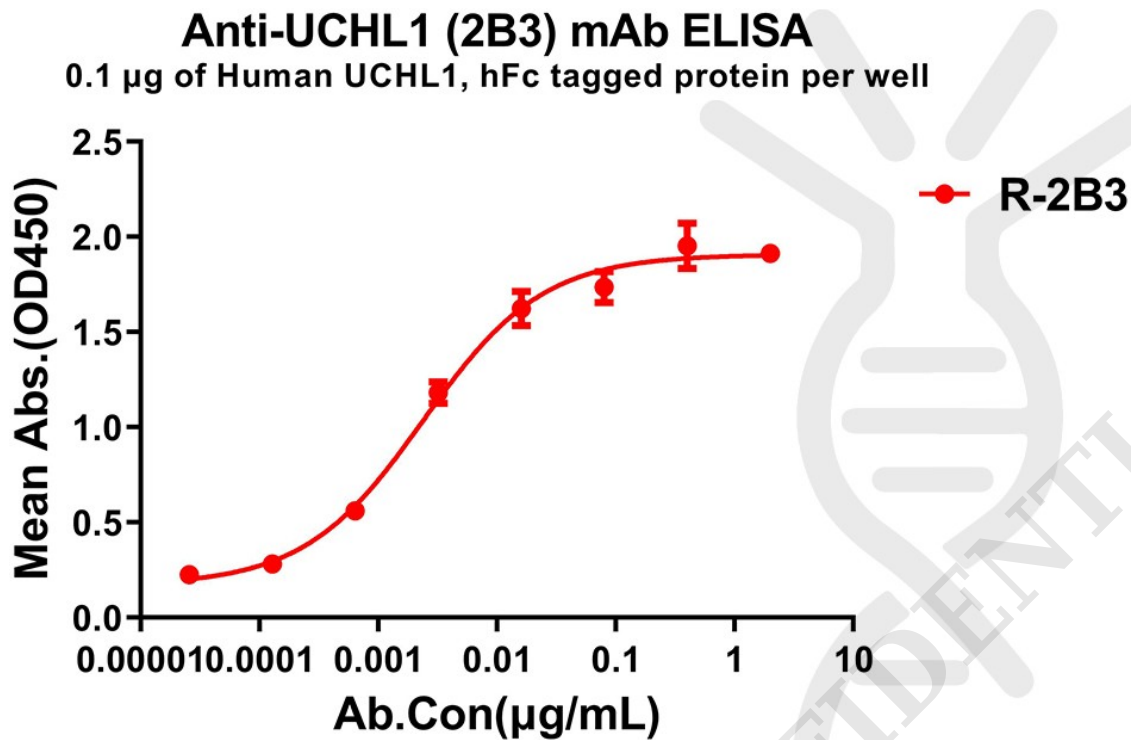


Figure 1. ELISA plate pre-coated by 1 $\mu\text{g}/\text{ml}$ (100 $\mu\text{l}/\text{well}$) Human UCHL1 protein, hFc tagged protein (PME100629) can bind Rabbit anti-UCHL1 monoclonal antibody(clone: 2B3) in a linear range of 1-20 ng/ml.

