

**PRODUCT INFORMATION**

<b>Target</b>	CXCL10
<b>Synonyms</b>	Gamma-IP10;IP-10;SCYB10;INP10
<b>Description</b>	Recombinant Cynomolgus CXCL10 protein with C-terminal human Fc tag
<b>Delivery</b>	In Stock
<b>Uniprot ID</b>	F7H741
<b>Expression Host</b>	HEK293
<b>Tag</b>	C-Human Fc Tag
<b>Molecular Characterization</b>	CXCL10(Ile22-Pro98) hFc(Glu99-Ala330)
<b>Molecular Weight</b>	The protein has a predicted molecular mass of 34.8 kDa after removal of the signal peptide. The apparent molecular mass of cCXCL10-hFc is approximately 25-55 kDa due to glycosylation.
<b>Purity</b>	The purity of the protein is greater than 95% as determined by SDS-PAGE and Coomassie blue staining.
<b>Formulation &amp; Reconstitution</b>	Lyophilized from sterile PBS, pH 7.4. Normally 5% - 8% trehalose is added as protectants before lyophilization. Please see Certificate of Analysis for specific instructions of reconstitution.
<b>Storage &amp; Shipping</b>	Store at -20°C to -80°C for 12 months in lyophilized form. After reconstitution, if not intended for use within a month, aliquot and store at -80°C (Avoid repeated freezing and thawing). Lyophilized proteins are shipped at ambient temperature.
<b>Background</b>	(C-X-C motif) ligand (CXCL)10 (CXCL10) belongs to the ELR(-) CXC subfamily chemokine. CXCL10/IP-10 exerts its function through binding to chemokine (C-X-C motif) receptor 3 (CXCR3), a seven trans-membrane receptor coupled to G proteins. CXCL10/IP-10 and its receptor, CXCR3, appear to contribute to the pathogenesis of many autoimmune diseases, organ specific (such as type 1 diabetes, autoimmune thyroiditis, Graves' disease and ophthalmopathy), or systemic (such as rheumatoid arthritis, psoriatic arthritis, systemic lupus erythematosus, mixed cryoglobulinemia, Sjögren syndrome, or systemic sclerosis). CXCL10/IP-10 is secreted by several cell types including endothelial cells, fibroblasts, keratinocytes, thyrocytes, preadipocytes, etc. Determination of high level of CXCL10/IP-10 in peripheral fluids is therefore a marker of host immune response.
<b>Usage</b>	Research use only
<b>Conjugate</b>	Unconjugated



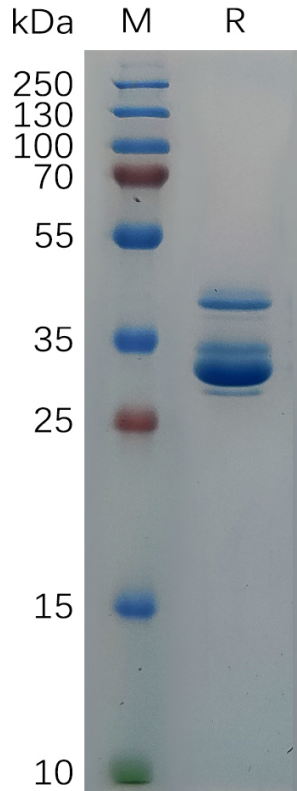


Figure 1. Cynomolgus CXCL10 Protein, hFc Tag on SDS-PAGE under reducing condition.

DIMABIO CONFIDENTIAL

