

PRODUCT INFORMATION

Target	GPRC5D
Description	Monoclonal Cell Line Derived from K562 Cells, Engineered for Stable Expression of Human GPRC5D Using Lentiviral Technology
Host Cells	K562
Uniprot ID	Q9NZD1
Applications	FACS Data
Growth media	RPMI-1640+10% FBS+1% P.S+2 ug/mL Puromycin
Package	5E6 Cells/mL
Host Species	Human
Suggested Control	SKU: DME100091; Anti-GPRC5D antibody(DM91); Rabbit mAb 1. Please inspect cells upon receipt and report any issues promptly. 2. We offer one-time replacements for issues reported within a week of receipt. 3. User-induced issues are not eligible for free replacements. 4. We do not accept liability for damages resulting from cell use, storage, or loss. 5. Feedback received more than one month after receipt will not be processed.
Warranty and Disclaimer	
Storage & Shipping	Cells are shipped using dry ice and require liquid nitrogen storage for long term preservation.
Synonyms	GPRC5D
Background	The protein encoded by this gene is a member of the G protein-coupled receptor family. Recent studies demonstrate that GPRC5D is expressed on malignant bone marrow plasma cells, whereas normal tissue expression is limited to the hair follicle. It may represent a potential target for effector-cell-mediated therapy to treat plasma-cell disorders like MM.
Usage	For research use only.



Hu_GPRC5D K562 Cell Line

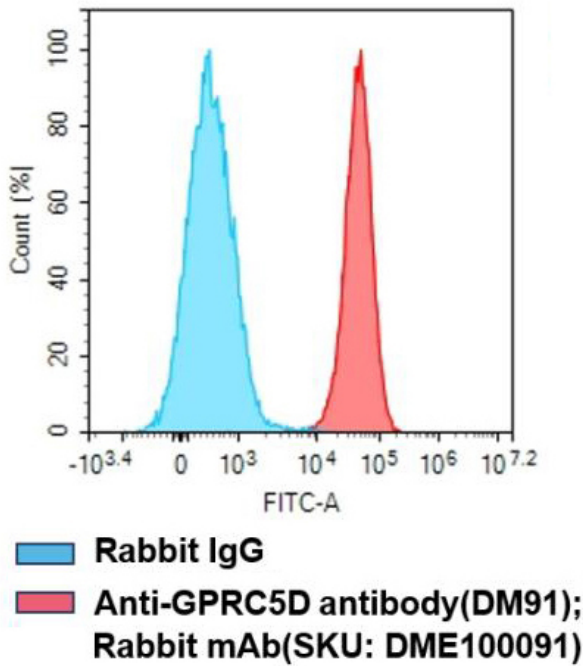


Figure 1. Flow cytometry analysis of human GPRC5D overexpression using Hu_GPRC5D K562 Cell Line (Cat. No. CEL100001) and Anti-GPRC5D antibody(DM91) rabbit mAb (Cat. No. DME100091)

DIMABIO CONFIDENTIAL

