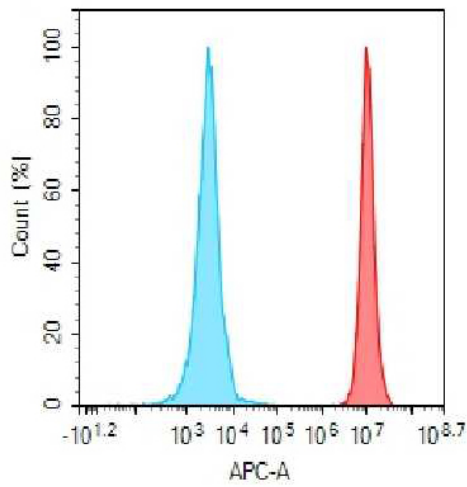


PRODUCT INFORMATION

Target	CD52
Description	Monoclonal Cell Line Derived from CHO-S Cells, Engineered for Stable Expression of Human CD52 Using Lentiviral Technology
Host Cells	CHO-S
Uniprot ID	P31358
Applications	FACS Data
Growth media	DMEM+10% FBS+1% P.S+Gln+2 ug/mL Puromycin
Package	5E6 Cells/mL
Host Species	Human
Suggested Control	SKU: BME100030
Warranty and Disclaimer	1. Please inspect cells upon receipt and report any issues promptly. 2. We offer one-time replacements for issues reported within a week of receipt. 3. User-induced issues are not eligible for free replacements. 4. We do not accept liability for damages resulting from cell use, storage, or loss. 5. Feedback received more than one month after receipt will not be processed.
Storage & Shipping	Cells are shipped using dry ice and require liquid nitrogen storage for long term preservation.
Synonyms	CDW52;HE5;CAMPATH-1 antigen
Background	CD52 (CD52 Molecule) is a Protein Coding gene. Diseases associated with CD52 include Polymphocytic Leukemia and Lymphocytic Leukemia. Among its related pathways are Metabolism of proteins and Post-translational modification- synthesis of GPI-anchored proteins.
Usage	For research use only.



Hu_CD52 CHO-S Cell Line



-  **Human IgG**
-  **Anti-CD52 (alemtuzumab biosimilar) mAb (SKU:BME100030)**

Figure 1. Flow cytometry analysis of human CD52 overexpression using Hu_CD52 CHO-S Cell Line (Cat. No. CEL100078) and Anti-CD52 (alemtuzumab biosimilar) mAb (Cat. No. BME100030)

DIMABIO CONFIDENTIAL

