

PRODUCT INFORMATION

Target	CDH6
Description	Monoclonal Cell Line Derived from CHO-S Cells, Engineered for Stable Expression of Human CDH6 Using Lentiviral Technology
Host Cells	CHO-S
Uniprot ID	P55285
Applications	FACS Data
Growth media	DMEM+10% FBS+1% P.S+Gln+2 ug/mL Puromycin
Package	5E6 Cells/mL
Host Species	Human
Suggested Control	SKU: BME100232
Warranty and Disclaimer	1. Please inspect cells upon receipt and report any issues promptly. 2. We offer one-time replacements for issues reported within a week of receipt. 3. User-induced issues are not eligible for free replacements. 4. We do not accept liability for damages resulting from cell use, storage, or loss. 5. Feedback received more than one month after receipt will not be processed.
Storage & Shipping	Cells are shipped using dry ice and require liquid nitrogen storage for long term preservation.
Synonyms	CDH6; K-cadherin
Background	This gene encodes a member of the cadherin superfamily. Cadherins are membrane glycoproteins that mediate homophilic cell-cell adhesion and play critical roles in cell differentiation and morphogenesis. The encoded protein is a type II cadherin and may play a role in kidney development as well as endometrium and placenta formation. Decreased expression of this gene may be associated with tumor growth and metastasis. [provided by RefSeq; May 2011]
Usage	For research use only.



Hu_CDH6 CHO-S Cell Line

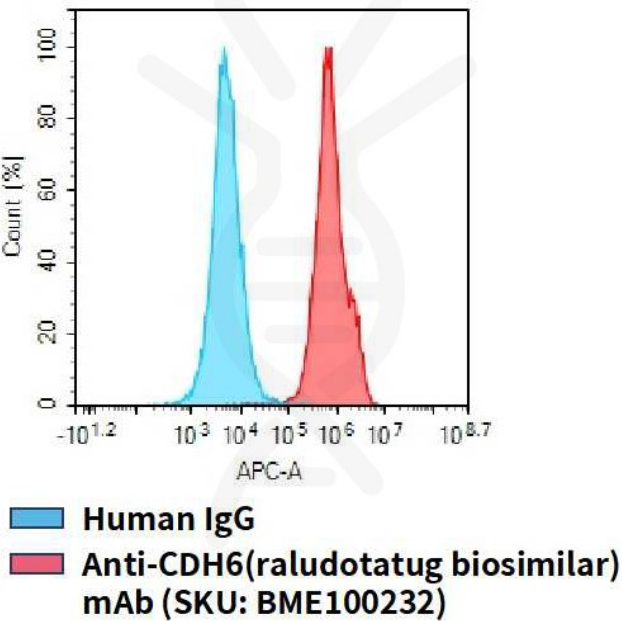


Figure 1. Flow cytometry analysis of human CDH6 overexpression using Hu_CDH6 CHO-S Cell Line (Cat. No. CEL100055) and Anti-CDH6(raludotatug biosimilar) mAb (Cat. No. BME100232)

