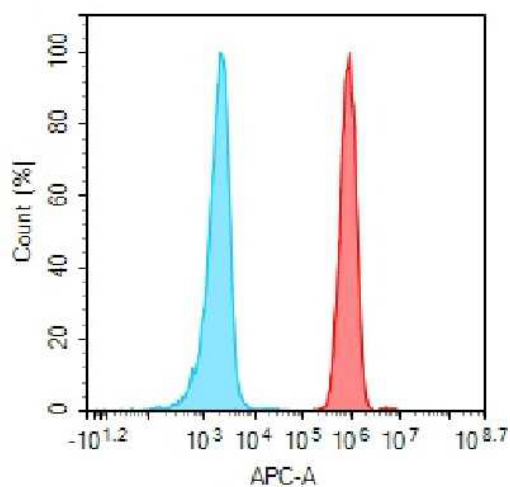


PRODUCT INFORMATION

Target	IGF1R
Description	Monoclonal Cell Line Derived from CHO-S Cells, Engineered for Stable Expression of Human IGF1R Using Lentiviral Technology
Host Cells	CHO-S
Uniprot ID	P08069
Applications	FACS Data
Growth media	DMEM+10% FBS+1% P.S+Gln+2 ug/mL Puromycin
Package	5E6 Cells/mL
Host Species	Human
Suggested Control	SKU: BME100174
Warranty and Disclaimer	1. Please inspect cells upon receipt and report any issues promptly. 2. We offer one-time replacements for issues reported within a week of receipt. 3. User-induced issues are not eligible for free replacements. 4. We do not accept liability for damages resulting from cell use, storage, or loss. 5. Feedback received more than one month after receipt will not be processed.
Storage & Shipping	Cells are shipped using dry ice and require liquid nitrogen storage for long term preservation.
Synonyms	CD221; IGFIR; IGFR; JTK13
Background	This receptor binds insulin-like growth factor with a high affinity. It has tyrosine kinase activity. The insulin-like growth factor I receptor plays a critical role in transformation events. Cleavage of the precursor generates alpha and beta subunits. It is highly overexpressed in most malignant tissues where it functions as an anti-apoptotic agent by enhancing cell survival. Alternatively spliced transcript variants encoding distinct isoforms have been found for this gene. [provided by RefSeq, May 2014]
Usage	For research use only.



Hu_IGF1R CHO-S Cell Line



-  Human IgG
-  Anti-IGF-1R(teprotumumab biosimilar) mAb (SKU: BME100174)

Figure 1. Flow cytometry analysis of human IGF1R overexpression using Hu_IGF1R CHO-S Cell Line (Cat. No. CEL100068) and Anti-IGF-1R(teprotumumab biosimilar) mAb (Cat. No. BME100174)

DIMABIO CONFIDENTIAL

