

PRODUCT INFORMATION

Target	PSMA
Description	Monoclonal Cell Line Derived from K562 Cells, Engineered for Stable Expression of Human PSMA Using Lentiviral Technology
Host Cells	K562
Uniprot ID	Q04609
Applications	FACS Data
Growth media	RPMI-1640+10% FBS+1% P.S+1% Gln+2 ug/mL Puromycin
Package	5E6 Cells/mL
Host Species	Human
Suggested Control	SKU: BME100128 1. Please inspect cells upon receipt and report any issues promptly. 2. We offer one-time replacements for issues reported within a week of receipt. 3. User-induced issues are not eligible for free replacements. 4. We do not accept liability for damages resulting from cell use, storage, or loss. 5. Feedback received more than one month after receipt will not be processed.
Warranty and Disclaimer	
Storage & Shipping	Cells are shipped using dry ice and require liquid nitrogen storage for long term preservation.
Synonyms	FGCP;FOLH;GCP2;GCP11;mGCP;NAALAD1;NAALAdase;PSM;PSMA This gene encodes a type II transmembrane glycoprotein belonging to the M28 peptidase family. The protein acts as a glutamate carboxypeptidase on different alternative substrates, including the nutrient folate and the neuropeptide N-acetyl-l-aspartyl-l-glutamate and is expressed in a number of tissues such as prostate, central and peripheral nervous system and kidney. A mutation in this gene may be associated with impaired intestinal absorption of dietary folates, resulting in low blood folate levels and consequent hyperhomocysteinemia. Expression of this protein in the brain may be involved in a number of pathological conditions associated with glutamate excitotoxicity. In the prostate the protein is up-regulated in cancerous cells and is used as an effective diagnostic and prognostic indicator of prostate cancer. This gene likely arose from a duplication event of a nearby chromosomal region. Alternative splicing gives rise to multiple transcript variants encoding several different isoforms.
Background	
Usage	For research use only.



Hu_PSMA K562 Cell Line

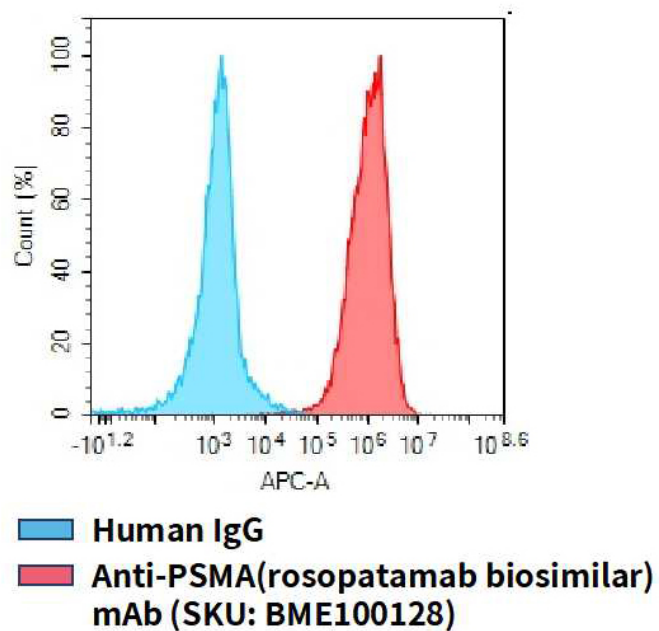


Figure 1. Flow cytometry analysis of human PSMA overexpression using Hu_PSMA K562 Cell Line (Cat. No. CEL100019) and Anti-PSMA(rosopatamab biosimilar) mAb (Cat. No. BME100128)

DIMABIO CONFIDENTIAL

