

PRODUCT INFORMATION

Target	AFP
Synonyms	AFPD;FETA;HPAFP
Description	Recombinant human AFP protein with C-terminal human Fc tag
Delivery	In Stock
Uniprot ID	P02771
Expression Host	HEK293
Tag	C-Human Fc Tag
Molecular Characterization	AFP(Arg19-Val609) hFc(Glu99-Ala330)
Molecular Weight	The protein has a predicted molecular mass of 92.6 kDa after removal of the signal peptide. The apparent molecular mass of AFP-hFc is approximately 100-130 kDa due to glycosylation.
Purity	The purity of the protein is greater than 90% as determined by SDS-PAGE and Coomassie blue staining.
Formulation & Reconstitution	Lyophilized from sterile PBS, pH 7.4. Normally 5 % - 8% trehalose is added as protectants before lyophilization. Please see Certificate of Analysis for specific instructions of reconstitution.
Storage & Shipping	Store at -20°C to -80°C for 12 months in lyophilized form. After reconstitution, if not intended for use within a month, aliquot and store at -80°C (Avoid repeated freezing and thawing). Lyophilized proteins are shipped at ambient temperature.
Background	This gene encodes alpha-fetoprotein, a major plasma protein produced by the yolk sac and the liver during fetal life. Alpha-fetoprotein expression in adults is often associated with hepatocarcinoma and with teratoma, and has prognostic value for managing advanced gastric cancer. However, hereditary persistence of alpha-fetoprotein may also be found in individuals with no obvious pathology. The protein is thought to be the fetal counterpart of serum albumin, and the alpha-fetoprotein and albumin genes are present in tandem in the same transcriptional orientation on chromosome 4. Alpha-fetoprotein is found in monomeric as well as dimeric and trimeric forms, and binds copper, nickel, fatty acids and bilirubin. The level of alpha-fetoprotein in amniotic fluid is used to measure renal loss of protein to screen for spina bifida and anencephaly.
Usage	Research use only
Conjugate	Unconjugated



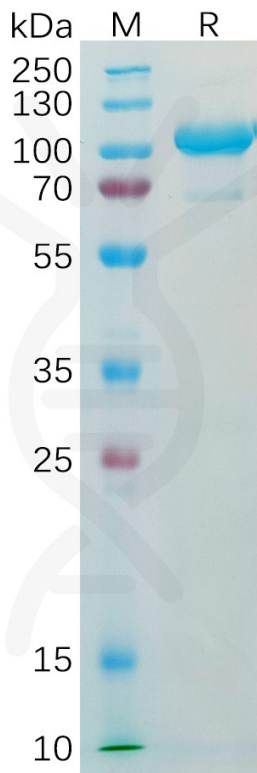


Figure 1. Human AFP Protein, hFc Tag on SDS-PAGE under reducing condition.

**Human AFP,hFc Tagged protein ELISA**  
0.2  $\mu$ g of Human AFP, hFc tagged protein per well

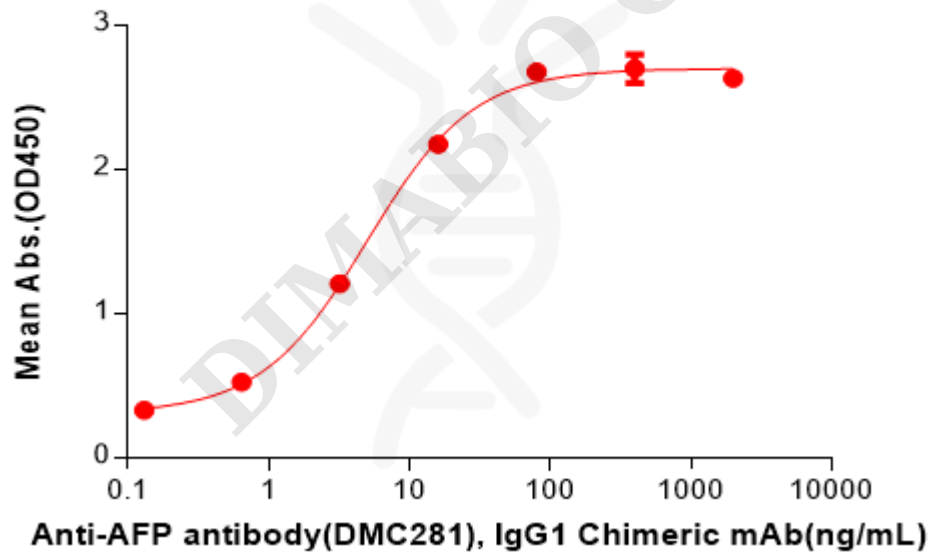


Figure 2. ELISA plate pre-coated by 2  $\mu$ g/mL (100  $\mu$ L/well) Human AFP Protein, hFc Tag(PME100075) can bind Anti-AFP antibody(DMC281), IgG1 Chimeric mAb in a linear range of 0.64-16 ng/mL.

