

PRODUCT INFORMATION

Target	ALPP
Synonyms	ALP;ALPI;IAP;PALP;PLAP;PLAP-1
Description	Recombinant Human ALPP Protein with C-terminal 6×His tag
Delivery	In Stock
Uniprot ID	P05187
Expression Host	HEK293
Tag	C-6×His Tag
Molecular Characterization	ALPP(Ile23-Thr505) 6×His tag
Molecular Weight	The protein has a predicted molecular mass of 53.5 kDa after removal of the signal peptide. The apparent molecular mass of ALPP-His is approximately 55-70 kDa due to glycosylation.
Purity	The purity of the protein is greater than 85% as determined by SDS-PAGE and Coomassie blue staining.
Formulation & Reconstitution	Lyophilized from sterile PBS, pH 7.4. Normally 5 % - 8% trehalose is added as protectants before lyophilization. Please see Certificate of Analysis for specific instructions of reconstitution.
Storage & Shipping	Store at -20°C to -80°C for 12 months in lyophilized form. After reconstitution, if not intended for use within a month, aliquot and store at -80°C (Avoid repeated freezing and thawing). Lyophilized proteins are shipped at ambient temperature.
Background	The protein encoded by this gene is an alkaline phosphatase, a metalloenzyme that catalyzes the hydrolysis of phosphoric acid monoesters. It belongs to a multigene family composed of four alkaline phosphatase isoenzymes. The enzyme functions as a homodimer and has a catalytic site containing one magnesium and two zinc ions, which are required for its enzymatic function. One of the main sources of this enzyme is the liver, and thus, it's one of several indicators of liver injury in different clinical conditions. In pregnant women, this protein is primarily expressed in placental and endometrial tissue, however, strong ectopic expression has been detected in ovarian adenocarcinoma, serous cystadenocarcinoma, and other ovarian cancer cells. [provided by RefSeq, Aug 2020]
Usage	Research use only
Conjugate	Unconjugated



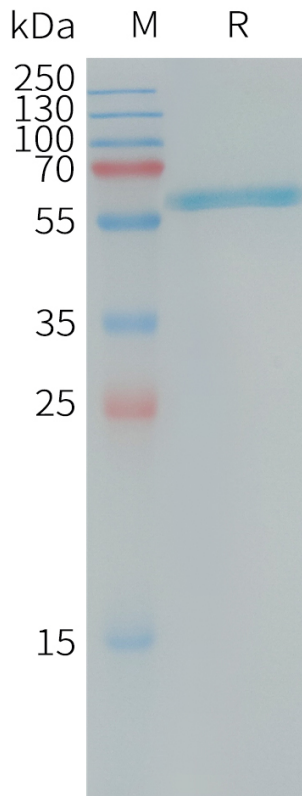


Figure 1. Human ALPP Protein, His Tag on SDS-PAGE under reducing condition.

Human ALPP, His Tagged protein ELISA

0.2 μ g of Human ALPP, His tagged protein per well

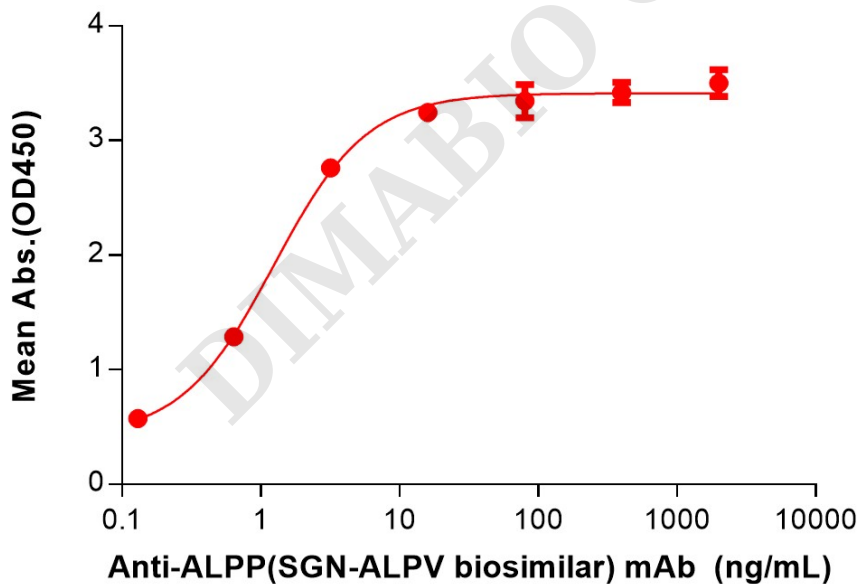


Figure 2. ELISA plate pre-coated by 2 μ g/mL (100 μ L/well) Human ALPP Protein, His Tag (PME101242) can bind Anti-ALPP(SGN-ALPV biosimilar) mAb (BME100186) in a linear range of 0.13-3.20 ng/mL.

