

**PRODUCT INFORMATION**

<b>Target</b>	AXL
<b>Synonyms</b>	AXL;UFO
<b>Description</b>	Recombinant Human AXL with C-terminal human Fc tag
<b>Delivery</b>	In Stock
<b>Uniprot ID</b>	P30530
<b>Expression Host</b>	HEK293
<b>Tag</b>	C-Human Fc Tag
<b>Molecular Characterization</b>	AXL(Ala26-Pro449) hFc(Glu99-Ala330)
<b>Molecular Weight</b>	The protein has a predicted molecular mass of 71.9 kDa after removal of the signal peptide. The apparent molecular mass of AXL-hFc is approximately 100-130 kDa due to glycosylation.
<b>Purity</b>	The purity of the protein is greater than 95% as determined by SDS-PAGE and Coomassie blue staining.
<b>Formulation &amp; Reconstitution</b>	Lyophilized from sterile PBS, pH 7.4. Normally 5% - 8% trehalose is added as protectants before lyophilization. Please see Certificate of Analysis for specific instructions of reconstitution.
<b>Storage &amp; Shipping</b>	Store at -20°C to -80°C for 12 months in lyophilized form. After reconstitution, if not intended for use within a month, aliquot and store at -80°C (Avoid repeated freezing and thawing). Lyophilized proteins are shipped at ambient temperature.
<b>Background</b>	The protein encoded by this gene is a member of the Tyro3-Axl-Mer (TAM) receptor tyrosine kinase subfamily. The encoded protein possesses an extracellular domain which is composed of two immunoglobulin-like motifs at the N-terminal, followed by two fibronectin type-III motifs. It transduces signals from the extracellular matrix into the cytoplasm by binding to the vitamin K-dependent protein growth arrest-specific 6 (Gas6). This gene may be involved in several cellular functions including growth, migration, aggregation and anti-inflammation in multiple cell types. Alternative splicing results in multiple transcript variants of this gene.
<b>Usage</b>	Research use only
<b>Conjugate</b>	Unconjugated



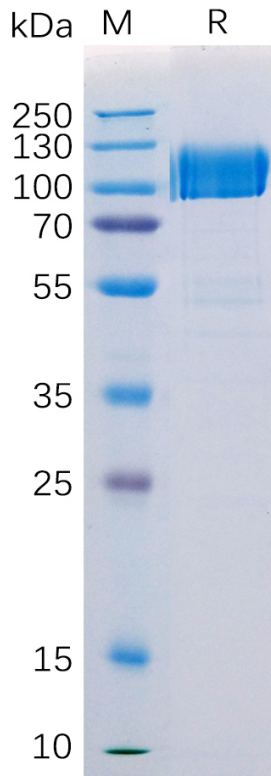


Figure 1. Human AXL Protein, hFc Tag on SDS-PAGE under reducing condition.

### Human AXL, hFc tagged protein ELISA

0.1  $\mu$ g of Human AXL, hFc tagged protein per well

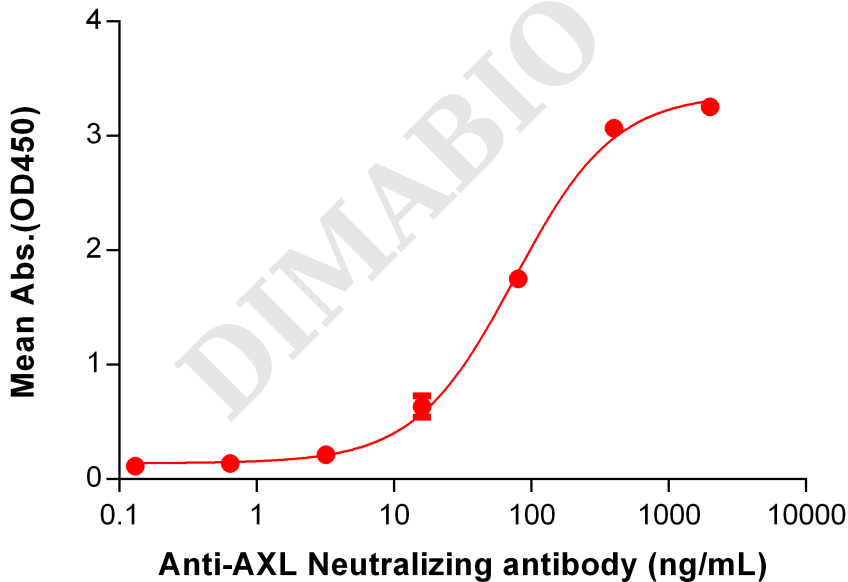


Figure 2. ELISA plate pre-coated by 1  $\mu$ g/ml (100  $\mu$ l/well) Human AXL, hFc tagged protein (PME100532) can bind Anti-AXL Neutralizing Antibody BME100033 in a linear range of 0.64-80.0 ng/ml.



### Human AXL, hFc Tagged protein ELISA

0.2  $\mu\text{g}$  of Human AXL, hFc tagged protein per well

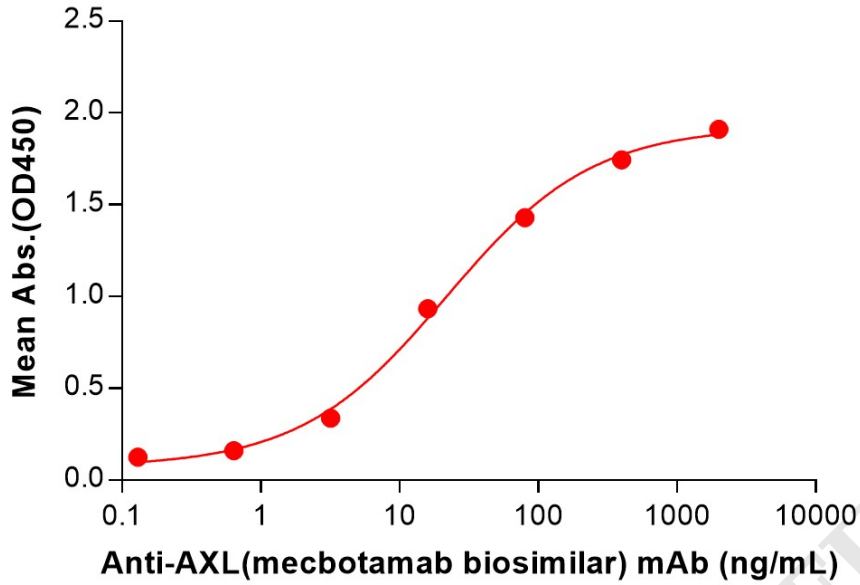


Figure 3. ELISA plate pre-coated by 2  $\mu\text{g}/\text{mL}$  (100  $\mu\text{L}/\text{well}$ ) Human AXL Protein, hFc Tag (PME100532) can bind Anti-AXL(mecbotamab biosimilar) mAb (BME100175) in a linear range of 3.20–400 ng/mL.

