

**PRODUCT INFORMATION**

<b>Target</b>	B7-1
<b>Synonyms</b>	CD80;B7;B7-1;B7.1;BB1;CD28LG;CD28LG1;LAB7
<b>Description</b>	Recombinant human B7-1 protein with C-terminal human Fc tag
<b>Delivery</b>	In Stock
<b>Uniprot ID</b>	P33681
<b>Expression Host</b>	HEK293
<b>Tag</b>	C-Human Fc Tag
<b>Molecular Characterization</b>	B7-1(Val35-Asn242) hFc(Glu99-Ala330)
<b>Molecular Weight</b>	The protein has a predicted molecular mass of 50.0 kDa after removal of the signal peptide.
<b>Purity</b>	The purity of the protein is greater than 95% as determined by SDS-PAGE and Coomassie blue staining.
<b>Formulation &amp; Reconstitution</b>	Lyophilized from sterile PBS, pH 7.4. Normally 5% - 8% trehalose is added as protectants before lyophilization. Please see Certificate of Analysis for specific instructions of reconstitution.
<b>Storage &amp; Shipping</b>	Store at -20°C to -80°C for 12 months in lyophilized form. After reconstitution, if not intended for use within a month, aliquot and store at -80°C (Avoid repeated freezing and thawing). Lyophilized proteins are shipped at ambient temperature.
<b>Background</b>	The protein encoded by this gene is a membrane receptor that is activated by the binding of CD28 or CTLA-4. The activated protein induces T-cell proliferation and cytokine production. This protein can act as a receptor for adenovirus subgroup B and may play a role in lupus neuropathy.
<b>Usage</b>	Research use only



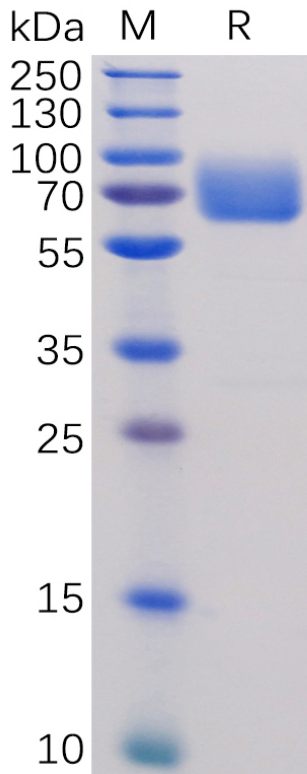


Figure 1. Human B7-1 Protein, hFc Tag on SDS-PAGE under reducing condition.

### Human B7-1, hFc Tagged protein ELISA

0.2  $\mu$ g of Human B7-1, hFc Tagged protein per well

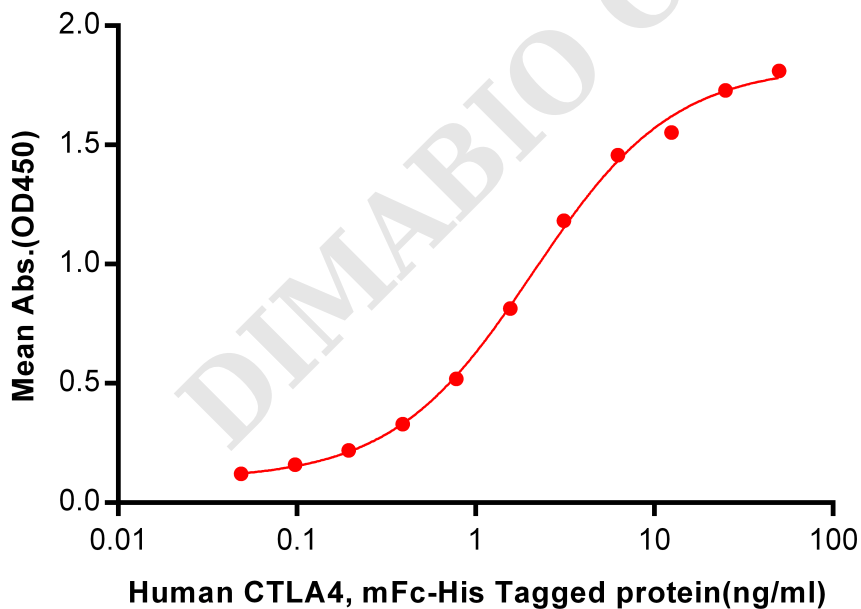


Figure 2. ELISA plate pre-coated by 2  $\mu$ g/ml (100  $\mu$ l/well) Human B7-1, hFc tagged protein (PME100473) can bind Human CTLA4, mFc-His tagged protein PME100017 in a linear range of 0.048-2.094 ng/ml.



## Human B7-1, hFc Tagged protein ELISA

0.2  $\mu\text{g}$  of B7-1, hFc Tagged protein per well

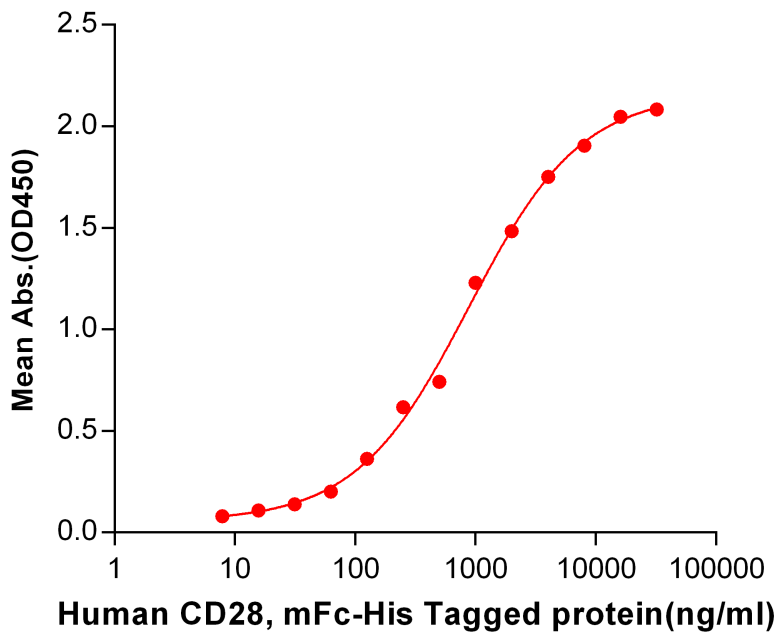


Figure 3. ELISA plate pre-coated by 2  $\mu\text{g}/\text{ml}$  (100  $\mu\text{l}/\text{well}$ ) Human B7-1, hFc tagged protein (PME100473) can bind Human CD28, mFc-His tagged protein PME100014 in a linear range of 125-4000 ng/ml.

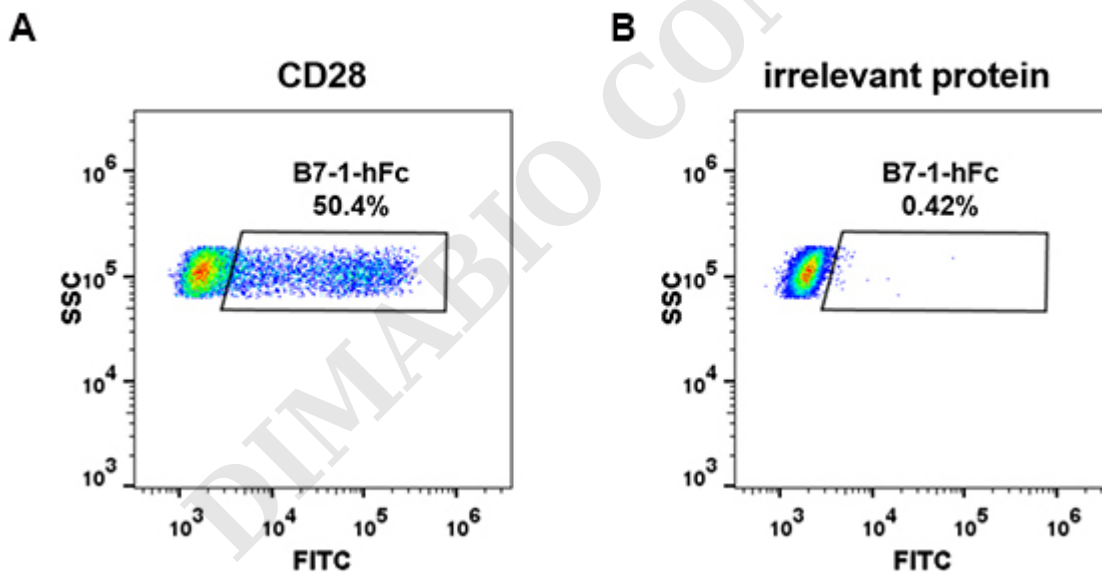


Figure 4. HEK293 cell line transfected with irrelevant protein (B) and human CD28 (A) were surface stained with Human B7-1, hFc tagged protein (PME100473) 1  $\mu\text{g}/\text{ml}$  followed by Alexa 488-conjugated anti-human IgG secondary antibody.



### Human B7-1, hFc tagged protein ELISA

0.1  $\mu\text{g}$  of Human B7-1, hFc tagged protein per well

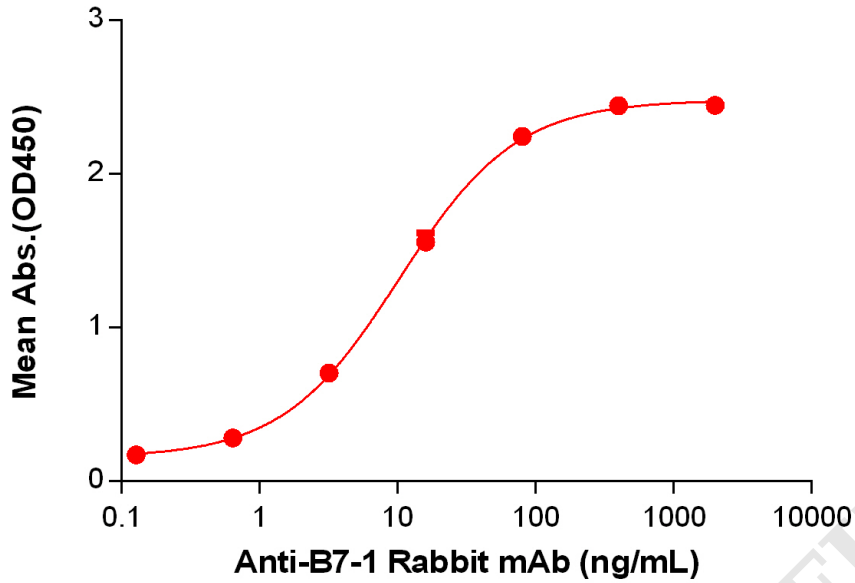


Figure 5. ELISA plate pre-coated by 1  $\mu\text{g}/\text{mL}$  (100  $\mu\text{L}/\text{well}$ ) Human B7-1 Protein, hFc Tag (PME100473) can bind Anti-B7-1 Rabbit mAb in a linear range of 3.2-80 ng/mL.

DIMABIO CONFIDENTIAL

