

PRODUCT INFORMATION

Target	BTN3A1
Synonyms	BTN3A1;BTF5;CD277;BTN3.1;BT3.1
Description	Recombinant Human BTN3A1 protein with C-terminal mouse Fc and 6×His tag
Delivery	In Stock
Uniprot ID	O00481
Expression Host	HEK293
Tag	C-Mouse Fc and 6×His Tag
Molecular Characterization	BTN3A1(Gln30-Gly254) mFc(Pro99-Lys330) 6×His tag
Molecular Weight	The protein has a predicted molecular mass of 51.36 kDa after removal of the signal peptide.
Purity	The purity of the protein is greater than 95% as determined by SDS-PAGE and Coomassie blue staining.
Formulation & Reconstitution	Lyophilized from sterile PBS, pH 7.4. Normally 5% - 8% trehalose is added as protectants before lyophilization. Please see Certificate of Analysis for specific instructions of reconstitution.
Storage & Shipping	Store at -20°C to -80°C for 12 months in lyophilized form. After reconstitution, if not intended for use within a month, aliquot and store at -80°C (Avoid repeated freezing and thawing). Lyophilized proteins are shipped at ambient temperature.
Background	The butyrophilin (BTN) genes are a group of major histocompatibility complex (MHC)-associated genes that encode type I membrane proteins with 2 extracellular immunoglobulin (Ig) domains and an intracellular B30.2 (PRYSPRY) domain. Three subfamilies of human BTN genes are located in the MHC class I region: the single-copy BTN1A1 gene (MIM 601610) and the BTN2 (e.g., BTN2A1, MIM 613590) and BTN3 (e.g., BNT3A1) genes, which have undergone tandem duplication, resulting in 3 copies of each.
Usage	Research use only
Conjugate	Unconjugated



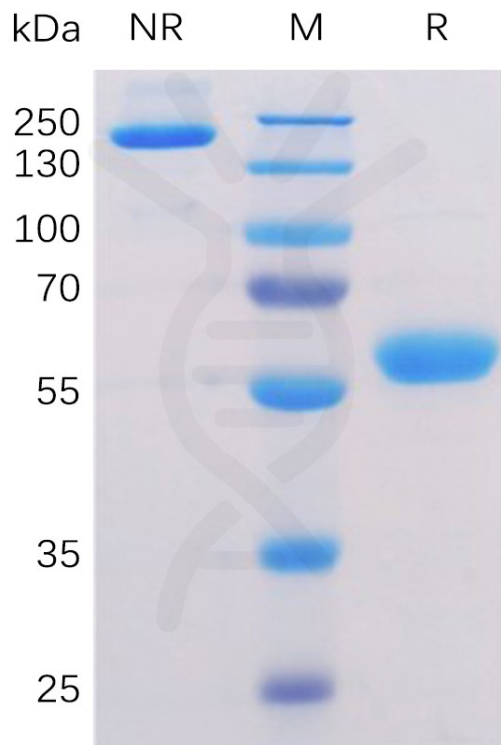


Figure 1. Human BTN3A1 Protein, mFc-His Tag on SDS-PAGE under non-reducing (NR) and reducing (R) conditions.

Human BTN3A1, mFc-His tagged protein ELISA

0.1 μg of Human BTN3A1, mFc-His tagged protein per well

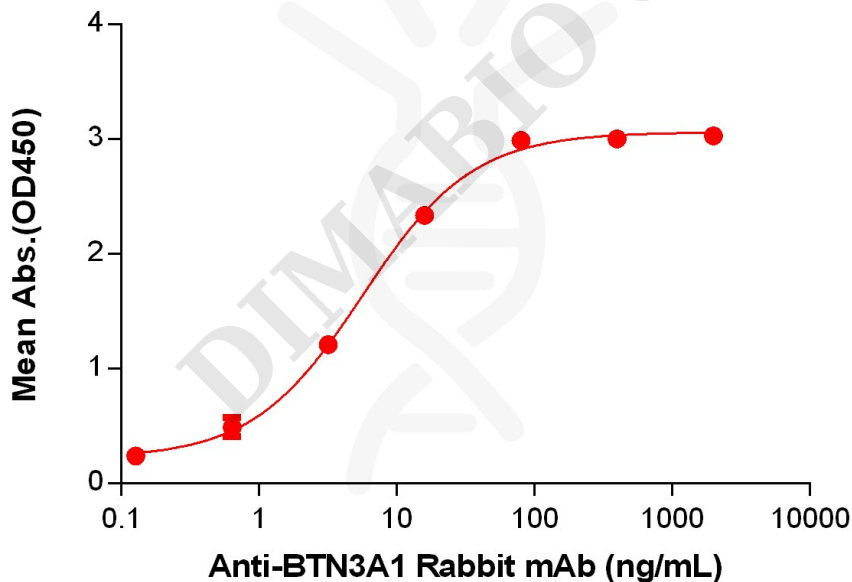


Figure 2. ELISA plate pre-coated by 1 $\mu\text{g}/\text{mL}$ (100 $\mu\text{L}/\text{well}$) Human BTN3A1 protein, mFc-His Tag (PME100056) can bind Anti-BTN3A1 Rabbit mAb in a linear range of 3.2-16 ng/mL.



Human BTN3A1, mFc-His Tagged protein ELISA

0.2 μ g of Human BTN3A1, mFc-His tagged protein per well

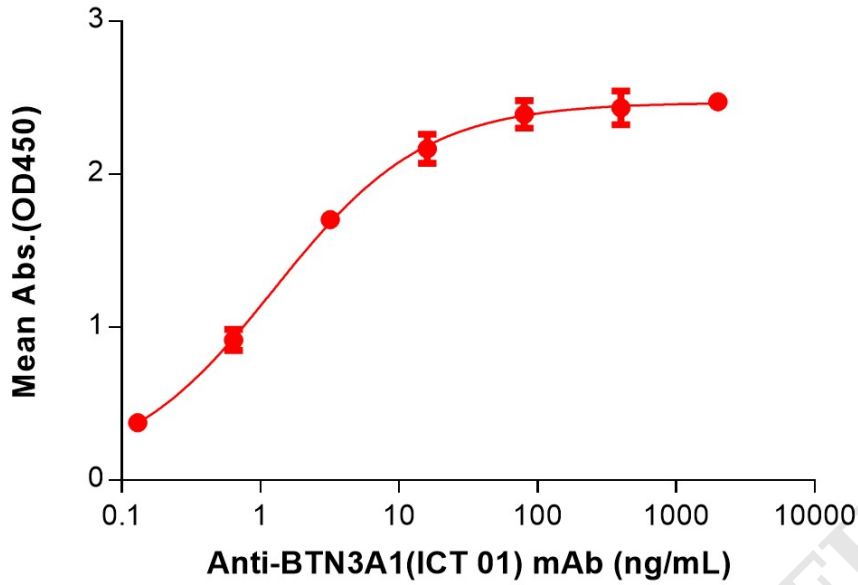


Figure 3. ELISA plate pre-coated by 2 μ g/mL (100 μ L/well) Human BTN3A1 Protein, mFc-His Tag (PME100056) can bind Anti-BTN3A1(ICT 01) mAb (BME100152) in a linear range of 0.13-16 ng/mL.

