

**PRODUCT INFORMATION**

<b>Target</b>	CADM1
<b>Synonyms</b>	BL2; ST17; IGSF4; NECL2; RA175; TSLC1; IGSF4A; Necl-2; SYNCAM; sgIGSF; sTSLC-1; synCAM1
<b>Description</b>	Recombinant human CADM1 Protein with C-terminal human Fc tag
<b>Delivery</b>	In Stock
<b>Uniprot ID</b>	Q9BY67
<b>Expression Host</b>	HEK293
<b>Tag</b>	C-Human Fc tag
<b>Molecular Characterization</b>	CADM1(Gln45-His374) hFc(Glu99-Ala330)
<b>Molecular Weight</b>	The protein has a predicted molecular mass of 63.2 kDa after removal of the signal peptide. The apparent molecular mass of CADM1-hFc is approximately 70-130 kDa due to glycosylation.
<b>Purity</b>	The purity of the protein is greater than 95% as determined by SDS-PAGE and Coomassie blue staining.
<b>Formulation &amp; Reconstitution</b>	Lyophilized from sterile PBS, pH 7.4. Normally 5 % - 8% trehalose is added as protectants before lyophilization. Please see Certificate of Analysis for specific instructions of reconstitution.
<b>Storage &amp; Shipping</b>	Store at -20°C to -80°C for 12 months in lyophilized form. After reconstitution, if not intended for use within a month, aliquot and store at -80°C (Avoid repeated freezing and thawing). Lyophilized proteins are shipped at ambient temperature.
<b>Background</b>	Enables signaling receptor binding activity. Involved in several processes, including cell recognition; positive regulation of cytokine production; and susceptibility to natural killer cell mediated cytotoxicity. Located in plasma membrane. Implicated in breast carcinoma and prostate cancer. Biomarker of cervix uteri carcinoma in situ. [provided by Alliance of Genome Resources, Apr 2022]
<b>Usage</b>	Research use only
<b>Conjugate</b>	Unconjugated



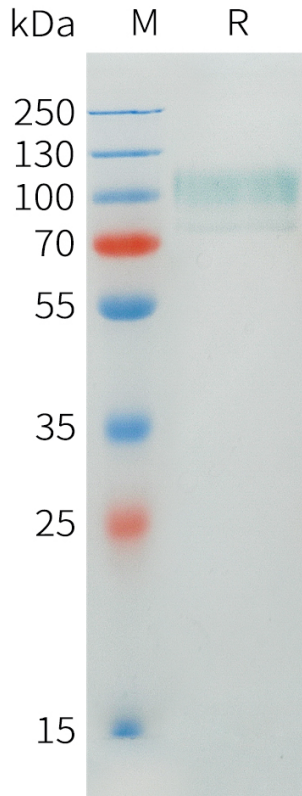


Figure 1. Human CADM1 Protein, hFc Tag on SDS-PAGE under reducing condition.

### Human CADM1, hFc Tagged protein ELISA

0.2  $\mu$ g of Human CADM1, hFc tagged protein per well

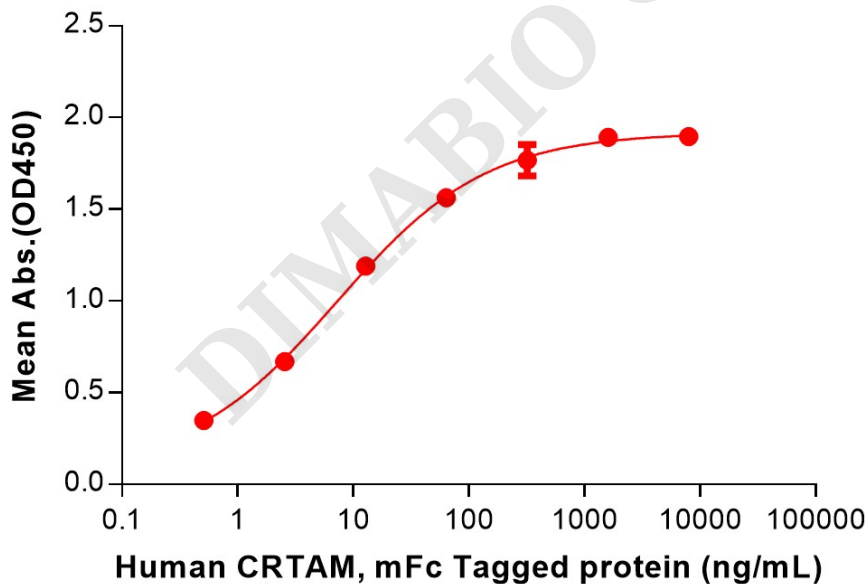


Figure 2. ELISA plate pre-coated by 2  $\mu$ g/mL (100  $\mu$ L/well) Human CADM1 Protein, hFc Tag (PME101544) can bind Human CRTAM Protein, mFc Tag (PME101547) in a linear range of 0.51-320 ng/mL.

