

PRODUCT INFORMATION

Target	CADM1
Synonyms	BL2; ST17; IGSF4; NECL2; RA175; TSLC1; IGSF4A; Necl-2; SYNCAM; sgIGSF; sTSLC-1; synCAM1
Description	Recombinant human CADM1 Protein with C-terminal mouse Fc tag
Delivery	In Stock
Uniprot ID	Q9BY67
Expression Host	HEK293
Tag	C-mouse Fc tag
Molecular Characterization	CADM1(Gln45-His374) mFc(Pro99-Lys330)
Molecular Weight	The protein has a predicted molecular mass of 63.3 kDa after removal of the signal peptide. The apparent molecular mass of CADM1-mFc is approximately 70-130 kDa due to glycosylation.
Purity	The purity of the protein is greater than 95% as determined by SDS-PAGE and Coomassie blue staining.
Formulation & Reconstitution	Lyophilized from sterile PBS, pH 7.4. Normally 5 % - 8% trehalose is added as protectants before lyophilization. Please see Certificate of Analysis for specific instructions of reconstitution.
Storage & Shipping	Store at -20°C to -80°C for 12 months in lyophilized form. After reconstitution, if not intended for use within a month, aliquot and store at -80°C (Avoid repeated freezing and thawing). Lyophilized proteins are shipped at ambient temperature.
Background	Enables signaling receptor binding activity. Involved in several processes, including cell recognition; positive regulation of cytokine production; and susceptibility to natural killer cell mediated cytotoxicity. Located in plasma membrane. Implicated in breast carcinoma and prostate cancer. Biomarker of cervix uteri carcinoma in situ. [provided by Alliance of Genome Resources, Apr 2022]
Usage	Research use only
Conjugate	Unconjugated



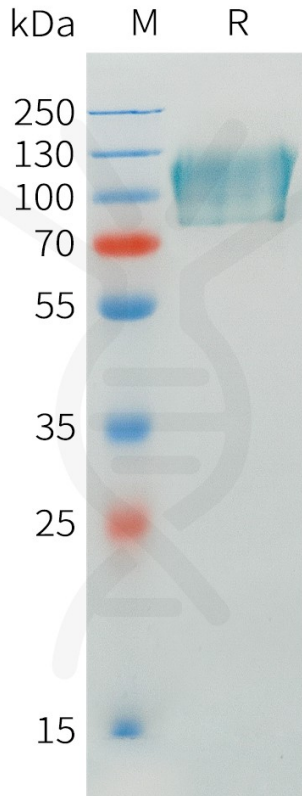


Figure 1. Human CADM1 Protein, mFc Tag on SDS-PAGE under reducing condition.

Human CADM1, mFc Tagged protein ELISA

0.2 μ g of Human CADM1, mFc tagged protein per well

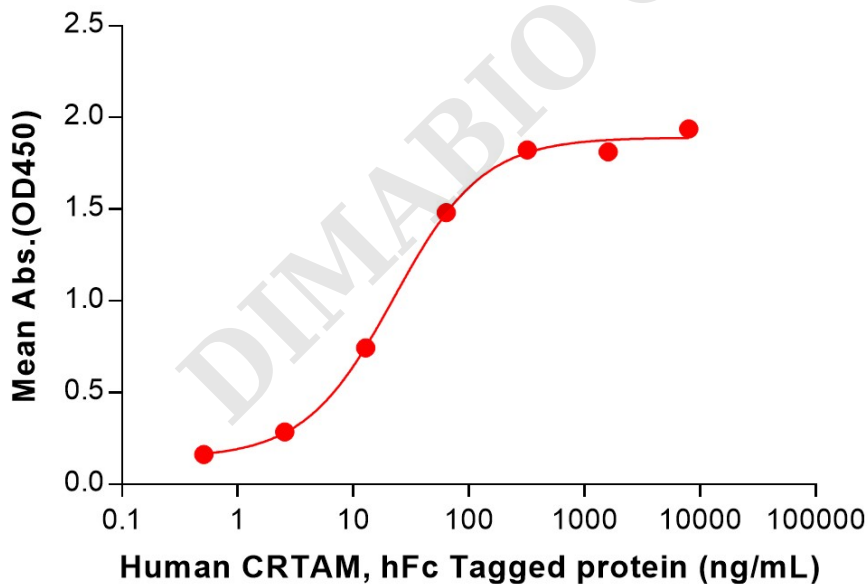


Figure 2. ELISA plate pre-coated by 2 μ g/mL (100 μ L/well) Human CADM1 Protein, mFc Tag (PME101545) can bind Human CRTAM Protein, hFc Tag (PME101546) in a linear range of 2.56-320 ng/mL.

