

PRODUCT INFORMATION

Target	CALR
Synonyms	cC1qR;CRT;HEL-S-99n;RO;SSA
Description	Recombinant human CALR protein with C-terminal 6×His tag
Delivery	In Stock
Uniprot ID	P27797
Expression Host	HEK293
Tag	C-6×His Tag
Molecular Characterization	CALR(Glu18-Leu417) 6×His tag
Molecular Weight	The protein has a predicted molecular mass of 47.3 kDa after removal of the signal peptide. The apparent molecular mass of CALR-His is approximately 55-70 kDa due to glycosylation.
Purity	The purity of the protein is greater than 85% as determined by SDS-PAGE and Coomassie blue staining.
Formulation & Reconstitution	Lyophilized from sterile PBS, pH 7.4. Normally 5% - 8% trehalose is added as protectants before lyophilization. Please see Certificate of Analysis for specific instructions of reconstitution.
Storage & Shipping	Store at -20°C to -80°C for 12 months in lyophilized form. After reconstitution, if not intended for use within a month, aliquot and store at -80°C (Avoid repeated freezing and thawing). Lyophilized proteins are shipped at ambient temperature.
Background	Calreticulin is a highly conserved chaperone protein which resides primarily in the endoplasmic reticulum, and is involved in a variety of cellular processes, among them, cell adhesion. Additionally, it functions in protein folding quality control and calcium homeostasis. Calreticulin is also found in the nucleus, suggesting that it may have a role in transcription regulation. Systemic lupus erythematosus is associated with increased autoantibody titers against calreticulin. Recurrent mutations in calreticulin have been linked to various neoplasms, including the myeloproliferative type.[provided by RefSeq, May 2020]
Usage	Research use only
Conjugate	Unconjugated



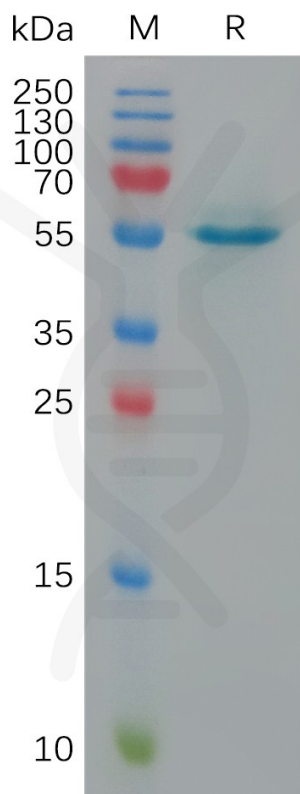


Figure 1. Human CALR Protein, His Tag on SDS-PAGE under reducing condition.

DIMABIO CONFIDENTIAL

