

PRODUCT INFORMATION

| | |
|---|---|
| Target | CCL24 |
| Synonyms | Ckb-6; MPIF2; MPIF-2; SCYA24 |
| Description | Recombinant human CCL24 Protein with C-terminal human Fc tag |
| Delivery | In Stock |
| Uniprot ID | O00175 |
| Expression Host | HEK293 |
| Tag | C-Human Fc tag |
| Molecular Characterization | CCL24(Val27-Cys119) hFc(Glu99-Ala330) |
| Molecular Weight | The protein has a predicted molecular mass of 36.6 kDa after removal of the signal peptide. |
| Purity | The purity of the protein is greater than 90% as determined by SDS-PAGE and Coomassie blue staining. |
| Formulation & Reconstitution | Lyophilized from sterile PBS, pH 7.4. Normally 5% - 8% trehalose is added as protectants before lyophilization. Please see Certificate of Analysis for specific instructions of reconstitution. |
| Storage & Shipping | Store at -20°C to -80°C for 12 months in lyophilized form. After reconstitution, if not intended for use within a month, aliquot and store at -80°C (Avoid repeated freezing and thawing). Lyophilized proteins are shipped at ambient temperature. |
| Background | This gene belongs to the subfamily of small cytokine CC genes. Cytokines are a family of secreted proteins involved in immunoregulatory and inflammatory processes. The CC cytokines are proteins characterized by two adjacent cysteines. The cytokine encoded by this gene displays chemotactic activity on resting T lymphocytes, a minimal activity on neutrophils, and is negative on monocytes and activated T lymphocytes. This protein also has antimicrobial activity, displaying an antibacterial effect on <i>S. pneumoniae</i> , <i>S. aureus</i> , Non-typeable <i>H. influenzae</i> , and <i>P. aeruginosa</i> . Finally, the protein is a strong suppressor of colony formation by a multipotential hematopoietic progenitor cell line. [provided by RefSeq, Jul 2020] |
| Usage | Research use only |
| Conjugate | Unconjugated |



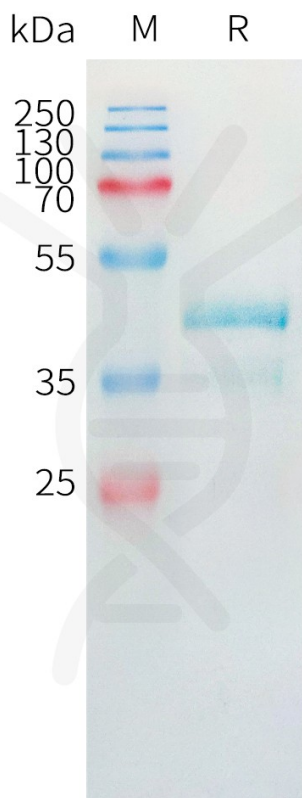


Figure 1. Human CCL24 Protein, hFc Tag on SDS-PAGE under reducing condition.

DIMABIO CONFIDENTIAL

