

## PRODUCT INFORMATION

<b>Target</b>	CD112
<b>Synonyms</b>	NECTIN2;HVEB;PRR2;PVRL2;PVRR2
<b>Description</b>	Recombinant Human CD112 with C-terminal mouse Fc tag
<b>Delivery</b>	In Stock
<b>Uniprot ID</b>	Q92692
<b>Expression Host</b>	HEK293
<b>Tag</b>	C-Mouse Fc Tag
<b>Molecular Characterization</b>	CD112(Gln32-Gly360) mFc(Pro99-Lys330)
<b>Molecular Weight</b>	The protein has a predicted molecular mass of 61.4 kDa after removal of the signal peptide. The apparent molecular mass of CD112-mFc is approximately 35-55 kDa due to glycosylation.
<b>Purity</b>	The purity of the protein is greater than 95% as determined by SDS-PAGE and Coomassie blue staining.
<b>Formulation &amp; Reconstitution</b>	Lyophilized from sterile PBS, pH 7.4. Normally 5% - 8% trehalose is added as protectants before lyophilization. Please see Certificate of Analysis for specific instructions of reconstitution.
<b>Storage &amp; Shipping</b>	Store at -20°C to -80°C for 12 months in lyophilized form. After reconstitution, if not intended for use within a month, aliquot and store at -80°C (Avoid repeated freezing and thawing). Lyophilized proteins are shipped at ambient temperature.
<b>Background</b>	This gene encodes a single-pass type I membrane glycoprotein with two Ig-like C2-type domains and an Ig-like V-type domain. This protein is one of the plasma membrane components of adherens junctions. It also serves as an entry for certain mutant strains of herpes simplex virus and pseudorabies virus, and it is involved in cell to cell spreading of these viruses. Variations in this gene have been associated with differences in the severity of multiple sclerosis. Alternate transcriptional splice variants, encoding different isoforms, have been characterized.
<b>Usage</b>	Research use only



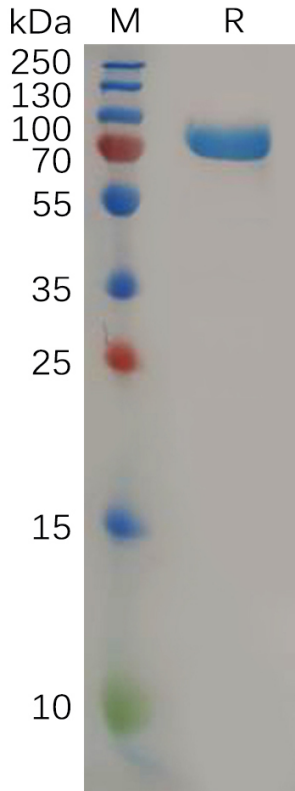


Figure 1. Human CD112 Protein, mFc Tag on SDS-PAGE under reducing condition.

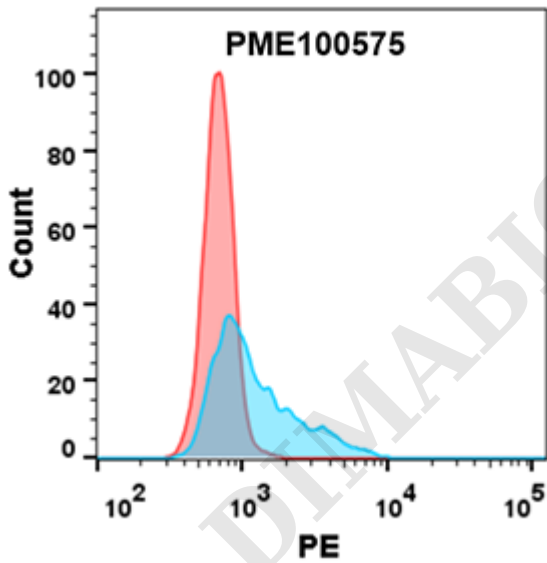


Figure 2. Flow cytometry analysis with 15 $\mu$ g/ml Human CD112 Protein, mFc tag (PME100575) on Expi293 cells transfected with human PVRIG (Blue histogram) or Expi293 transfected with irrelevant protein (Red histogram).



### Human CD112,mFc Tagged protein ELISA

0.2  $\mu$ g of Human CD112, mFc tagged protein per well

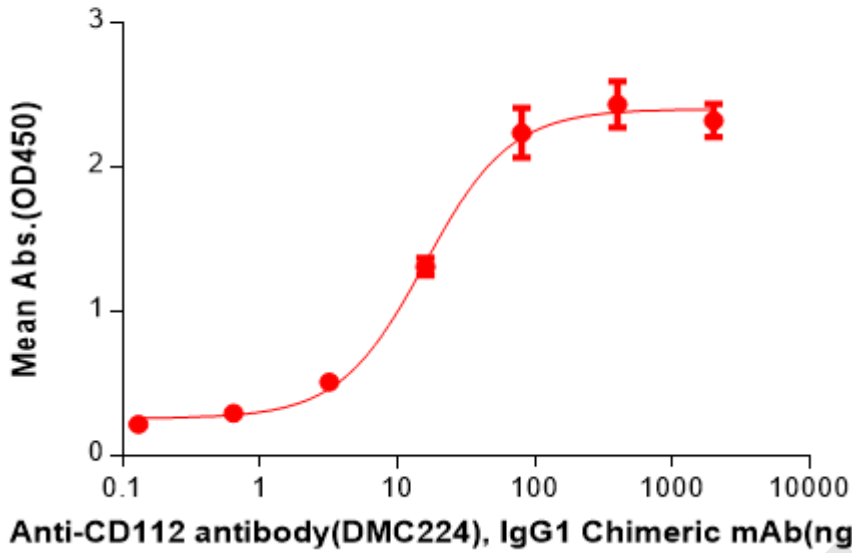


Figure 3. ELISA plate pre-coated by 2  $\mu$ g/mL (100  $\mu$ L/well) Human CD112 Protein, mFc Tag(PME100575) can bind Anti-CD112 antibody(DMC224), IgG1 Chimeric mAb in a linear range of 3.20-80 ng/mL.

